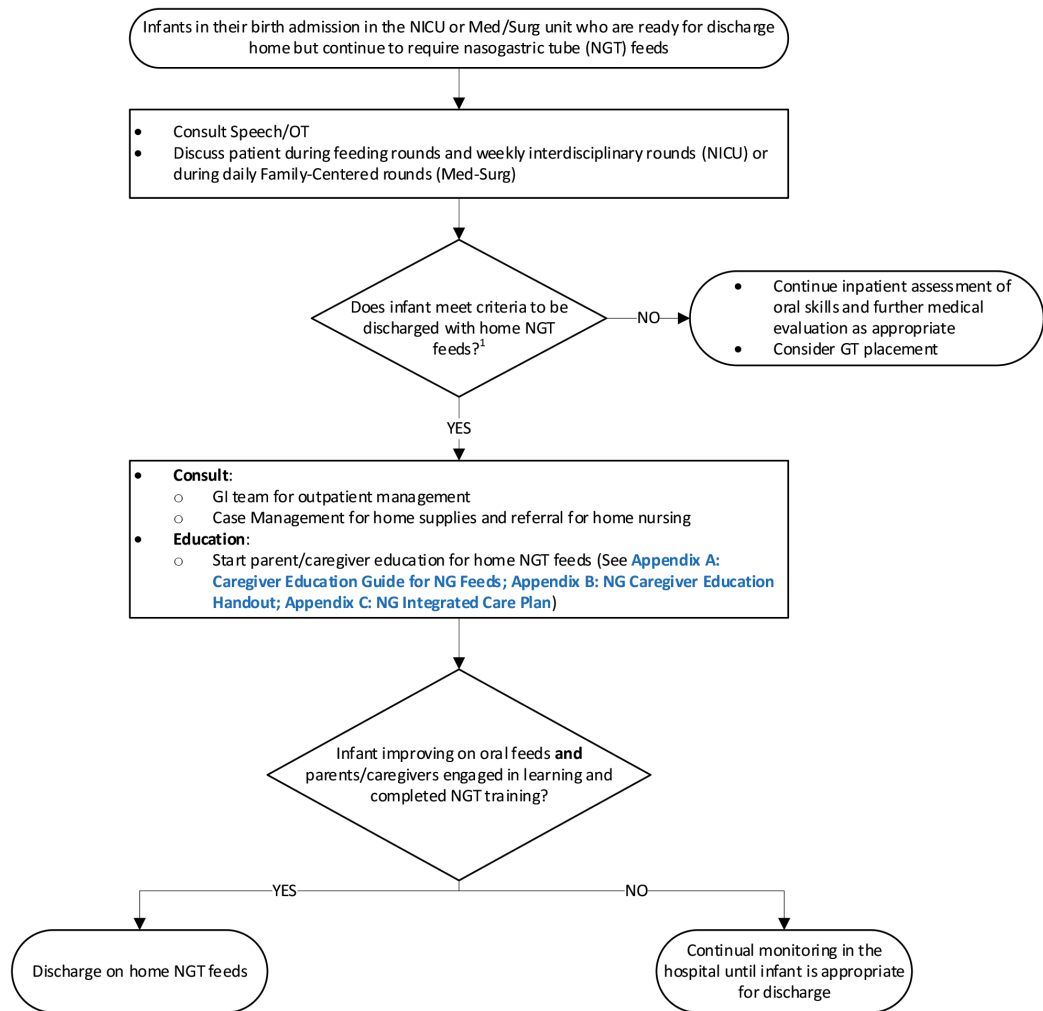


CLINICAL PATHWAY: Nasogastric Tube Discharge Home

THIS PATHWAY
SERVES AS A GUIDE
AND DOES NOT
REPLACE CLINICAL
JUDGMENT.



¹Home NGT Feeds Criteria

Inclusion Criteria (must meet all criteria):

- Infant in the hospital for their birth admission (in NICU or Med-Surg unit)
- Post-menstrual age ≥ 40 weeks and > 2 kg
- Deemed safe by the medical and feeding team to take oral feeds
- Showing improvement in volume of oral intake during observation period
- Anticipated time to full oral feeds is less than 6 months from discharge
- Able to take at least 100 ml/kg/day or per clinical judgment (in case of tube dislodgement overnight)
 - Special circumstances when team can consider a lower minimum PO volume: palliative care patients, cardiac patients pre- and post-operatively, infants with a volume restriction, infants with aspiration (micro aspiration or silent) as shown by modified barium swallow
- Meets other appropriate discharge criteria, including absence of apnea/bradycardia/desaturation events, temperature regulation, etc.
- Parents/caregivers demonstrate willingness and ability to perform home care and have reasonable expectations for duration of NGT

Exclusion Criteria:

- Does not meet all inclusion criteria
- Significant concerns for airway compromise (e.g., significant tachypnea, desaturations, etc.) during PO feedings with use of appropriate feeding interventions such as positioning, nipple type, feeding volume caps, etc.
- Requiring supplemental oxygen at home
- 24-hour continuous feeds
- Parents/caregivers not engaged in learning

CONTACTS: ALLYSON MCDERMOTT, MD | USHA PRASAD, DO | ALAINA PYLE, MD | BELLA ZEISLER, MD

LAST UPDATED: 02.27.25

