



D I R E C T O R Y O F
Medical Programs & Services

Revised 2.22.12



Table of Contents

<i>Driving directions</i>	A	Child Life.....	17
<i>Welcome to Connecticut Children's Medical Center</i>	B	Child Protection Program.....	18
<i>Executive Management Team</i>	B	<i>Nina Livingston, MD</i>	
<i>Offsites</i>	C	<i>Michael Soltis, MD</i>	
<i>Medical Administration</i>	E	Child & Family Support Services.....	19
<i>Referring Provider Relations</i>	F	Clinical Nutrition Services.....	20
<i>The Office of Postgraduate Medicine</i>	G	Craniofacial Team.....	21
<i>Quick Reference For Referrals And Admissions</i>	H	<i>Charles L. Castiglione, MD, Co-Director</i>	
Adolescent Health Services.....	1	<i>Paul Kanev, MD, Co-Director</i>	
<i>Aric Schichor, MD</i>		<i>Kelly Mabry, PhD, CCC/SLP</i>	
<i>Elaine Yordan, MD</i>		Critical Care/Pediatric Intensive Care.....	23
Anesthesiology.....	2	<i>Aaron R. Zucker, MD, Director</i>	
<i>Craig C. Bonanni, MD, Director</i>		<i>Christopher Carroll, MD</i>	
<i>John Garrison, MD, Associate Director</i>		<i>Leonard Comeau, MD</i>	
<i>William Ceruzzi, MD</i>		<i>Allison S. Cowl, MD</i>	
<i>Edward Cortland, MD</i>		<i>Daniel Fisher, MD</i>	
<i>Janice Fernandez, MD</i>		<i>Heather A. Schlott, MD</i>	
<i>Janet Hackman, MD</i>		<i>Adam Silverman, MD</i>	
<i>Mark Indelicato, MD</i>		Dentistry.....	25
<i>Gregory Kernisan, MD</i>		<i>Mina Mina, DMD, MSD, PhD, UConn Division Chair</i>	
<i>Anil Mathew, MD</i>		<i>Richard J. Skinner, DMD, Director</i>	
<i>Gerald Piserchia, MD</i>		<i>Gregory P. Mathieu, DDS, Residency Director</i>	
<i>Jeffrey Prebluda, MD</i>		Developmental & Behavioral Pediatrics.....	27
<i>Valerie Rossetti, MD</i>		<i>Ann Milanese, MD, Division Chief</i>	
Audiology Department.....	5	<i>Paul Dworkin, MD</i>	
Bereavement Program.....	7	<i>Mark Greenstein, MD</i>	
Cardiology.....	8	<i>Sarah Schlegel, MD</i>	
<i>Harris B. Leopold, MD, Director</i>		Digestive Diseases, Hepatology and Nutrition.....	29
<i>Daniel J. Diana, MD</i>		<i>Jeffrey Hyams, MD, Director</i>	
<i>Felice A. Heller, MD</i>		<i>Karan Emerick, MD</i>	
<i>Seth L. Lapuk, MD</i>		<i>Wael Sayej, MD</i>	
<i>Olga Toro-Salazar, MD</i>		<i>Francisco Sylvester, MD</i>	
<i>Alicia Wang, MD</i>		<i>Bella Zeisler, MD</i>	
Cardiovascular Surgery.....	11	<i>Donna Zeiter, MD</i>	
Case Management.....	12	Education & Rehabilitation Services.....	32
CCMC School.....	13	<i>Barbara E. Brown, MS, MEd,</i>	
<i>Patricia FitzGerald, PhD</i>		<i>Director, Education and Rehabilitation Services</i>	
<i>Michael Kern, PhD</i>		<i>Ann Milanese, MD, Chief,</i>	
<i>Francisco Ripepi, MD</i>		<i>Division of Developmental-Behavioral Pediatrics</i>	
<i>Ann Milanese, MD</i>		<i>Sarah Schlegel, MD</i>	
Center for Motion Analysis.....	15		
<i>Sylvia Öunpuu, MSc</i>			
<i>Director/Kinesiologist</i>			
<i>Peter A. DeLuca, MD, Medical Director</i>			

Table of Contents

Emergency Medicine.....	33	Infectious Diseases.....	53
<i>John C. Peng, MD, FAAP, FACEP, Interim Director</i>		<i>Juan Salazar, MD, MPH, Director</i>	
<i>Meredith W. Barrows, MD</i>		<i>Alberto Cohen-Abbo, MD</i>	
<i>John C. Brancato, MD</i>		<i>Henry M. Feder, Jr., MD</i>	
<i>Zoe Casey, MD</i>		<i>Jonathan Starr MD</i>	
<i>Ayesha Cheema, MD</i>		Injury Prevention Center.....	55
<i>Katherine F. Hesse (McGowan), MD, MPH, FAAP</i>		Inpatient Management Team.....	56
<i>Christine Lamoureux, MD</i>		<i>Anand Sekaran, MD</i>	
<i>James F. Parker, MD</i>		<i>Division Head</i>	
<i>Steven C. Rogers, MD</i>		<i>Melissa Held, MD</i>	
<i>Adam Silverman, MD</i>		<i>Richard Johnson, MD</i>	
<i>Sharon R. Smith, MD</i>		<i>David Marcello, MD</i>	
<i>Michael Soltis, MD</i>		<i>Christopher McDermott, MD</i>	
<i>Kristin Welch, MD</i>		<i>Christine Skurkis, MD</i>	
<i>James F. Wiley, II, MD</i>		<i>Catherine Sullivan, MD</i>	
Endocrinology.....	38	<i>William Zempsky, MD</i>	
<i>Karen Rubin, MD</i>		Lead Prevention Program.....	59
<i>Cem Demirci, MD</i>		Medical Education.....	60
<i>Elizabeth Estrada, MD</i>		<i>Edwin L. Zalneraitis, MD, Director</i>	
<i>Priya Phulwani, MD</i>		<i>Kenneth Spiegleman, MD, Medical Director, Continuing Medical Education</i>	
<i>Susan Ratzan, MD</i>		<i>Paula Algranati, MD, Director, Undergraduate Education</i>	
<i>Sevket Yigit, MD</i>		Neonatology.....	62
Family Support/Social Work.....	41	<i>Victor C. Herson, MD, Medical Director</i>	
Feeding Team.....	42	<i>Leonard Eisenfeld, MD</i>	
Food Allergy Program.....	43	<i>James Hagadorn, MD, MS</i>	
<i>Louis M. Mendelson, MD, Co-Director</i>		<i>Shabnam Lainwala, MD, PhD</i>	
<i>Jeffrey M. Factor, MD, Co-Director</i>		<i>Kathleen Marinelli, MD</i>	
<i>James P. Rosen, MD</i>		<i>Adam Matson, MD</i>	
<i>Marshall P. Grodofsky, MD</i>		<i>Marilyn R. Sanders, MD</i>	
Genetics.....	45	<i>Shikha Sarkar, MD, FAAP</i>	
<i>Robert M. Greenstein, MD, Director</i>		<i>Leslie Wolkoff, MD</i>	
<i>Sally S. Rosengren, MD</i>		Nephrology.....	65
<i>Min Fang, MD</i>		<i>Kathleen Sardegna, MD</i>	
Gynecology.....	47	Neurology.....	66
<i>Frederick J. Rau, MD</i>		<i>Francis J. DiMario, MD</i>	
Hand Surgery.....	48	<i>Jennifer Maden Cohen, MD</i>	
<i>Duffield Ashmead, MD, Co-Director</i>		<i>Richard S.K. Young, MD, MPH</i>	
<i>Andrew Caputo, MD, Co-Director</i>		<i>Ed Zalneraitis, MD</i>	
<i>Alan Babigian, MD</i>		Neurosurgery.....	68
<i>H. Kirk Watson, MD</i>		<i>Paul M. Kanev, MD, MS, Director</i>	
Hematology/Oncology.....	50	<i>Jonathan Martin, MD</i>	
<i>J. Nathan Hagstrom, MD, Medical Director</i>		Occupational Therapy Department.....	70
<i>Arnold J. Altman, MD</i>		Ophthalmology.....	72
<i>Donna M. Boruchov, MD</i>		<i>Paul R. Mitchell, MD</i>	
<i>Eileen R. Gillan, MD</i>		<i>Christopher J. Kelly, MD</i>	
<i>Michael S. Isakoff, MD</i>		<i>Peter G. Walden, MD</i>	
<i>Kerry M. Moss, MD</i>		Oral & Maxillofacial Surgery.....	73
<i>Andrea D. Orsey, MD</i>		<i>David Shafer, DMD, Director</i>	
<i>Nehal S. Parikh, MD</i>		<i>Michael Goupil, DDS, MEd</i>	

Table of Contents

Orthopaedics.....	74	Research.....	92
<i>Jeffrey D. Thomson, MD, Director</i>		<i>Georgine Burke, PhD, Director of Research Operations</i>	
<i>Mark Lee, MD</i>		<i>Kathleen McKay, PhD</i>	
<i>Philip Mack, MD</i>		Rheumatology.....	94
<i>Carl Nissen, MD, Director, Sports Medicine</i>		<i>Lawrence Zemel, MD, Director</i>	
<i>Kristan A. Pierz, MD</i>		<i>Barbara Edelheit, MD</i>	
<i>Elizabeth W. Weber</i>		<i>Barbara Rzepski, PhD</i>	
<i>Janet Zahradnik, MD</i>		Sleep Diagnostic Laboratory.....	95
Otolaryngology.....	77	Special Kids Support Center.....	96
<i>Scott Schoem, MD, Director</i>		Speech-Language Pathology.....	98
<i>Christopher Grindle, MD</i>		Sports Medicine.....	100
<i>Nicole Murray, MD</i>		<i>Carl Nissen, MD, Director</i>	
<i>Tulio A Valdez, MD</i>		<i>David Wang, MD</i>	
Pain Relief Program.....	79	Surgery, General.....	102
<i>William Zempsky, MD, Associate Director</i>		<i>Christine Finck, MD, Director</i>	
<i>Barbara Rzepski, PhD</i>		<i>Brendan T. Campbell, MD, MPH, Director, Pediatric Trauma</i>	
Physical Therapy Department.....	80	<i>Michael Bourque, MD</i>	
Plastic Surgery.....	82	<i>Donald Hight, MD</i>	
<i>Charles L. Castiglione, MD, Director</i>		<i>Christine Rader, MD</i>	
<i>Duffield Ashmead, MD</i>		<i>Richard Weiss, MD</i>	
<i>Alan Babigian, MD</i>		T.E.A.M. Club.....	104
<i>Alex Cech, MD</i>		Urology.....	105
<i>Orlando Delucia, MD</i>		<i>Fernando A. Ferrer, MD, Director</i>	
Primary Care.....	84	<i>Christina Kim, MD</i>	
<i>Catherine Wiley, MD, Director</i>		<i>John Makari, MD</i>	
<i>Alberto Abbo-Cohen, MD</i>		<i>Eric Nelson, MD</i>	
<i>Richelle deMayo, MD, CM</i>		<i>Denise Lepley, PhD</i>	
<i>Traci Friedman, MD</i>			
<i>Margaret McLaren, MD</i>			
<i>Laurie Scheiner, MD</i>			
<i>Hilda Slivka, MD</i>			
<i>Jacqueline Sloan, MD</i>			
<i>Kerri Wallace, MD</i>			
<i>Jessica Zimmerman, MD</i>			
Psychiatry.....	87		
<i>Robert A. Sahl, MD, Medical Director</i>			
<i>Eric D. Cohen, MD</i>			
<i>Nora Hanna, MD</i>			
<i>Daane Logsdon, DO</i>			
<i>Lynn Mangini, MD</i>			
<i>Lisa Namerow, MD</i>			
<i>Umme Salema Rahim, MD</i>			
<i>Jyotsna Ranga, MD</i>			
<i>Francisco Ripepi, MD</i>			
<i>Barbara Rzepski, PhD</i>			
Pulmonary Medicine.....	89		
<i>Craig M. Schramm, MD, Director</i>			
<i>Anita Bhandari, MD</i>			
<i>Melanie S. Collins, MD</i>			
<i>Umit Emre, MD, FAAP</i>			
<i>Craig D. Lapin, MD</i>			
Radiology.....	91		
<i>R. Timothy Brown, MD</i>			

** All faculty appointments with the University of Connecticut School of Medicine unless otherwise noted.*

** All locations are at Connecticut Children's Medical Center, 282 Washington St, Hartford, CT 06106 unless otherwise noted*

For questions or edits to this directory, please contact Eric Bethel at Connecticut Children's Corporate Communication Department at 860.610.5749 or eberthel@connecticutchildrens.org

Driving directions

282 Washington Street, Hartford, CT 06106 • 860.545.9000

From North or South of Hartford Take I-91S or I-91N to Exit 29A, "Capitol Area." Proceed under three overpasses to rotary. Follow rotary three-quarters around and take right onto Hudson Street. Take Hudson Street to the end. Turn right onto Jefferson Street. At the traffic light turn left onto Seymour Street. You will be on the property for Connecticut Children's Medical Center and Hartford Hospital. At the stop sign turn right. The Children's Medical Center will be on your left, "Public Parking" will be on your right.

From Route 2 Take Route 2 West to Exit 5D, "Route 3/Putnam Bridge Exit." Get on 91 North and follow directions above.

From East of Hartford Take I-84W and follow signs to Exit 54, "Downtown Hartford." Cross Founders Bridge then take first left onto Columbus Boulevard. Proceed through three lights and over a small bridge. After the bridge, turn right at second light, Charter Oak Avenue. Proceed through three lights and cross Main Street. After Main Street, proceed through one light and turn left at end onto Washington Street. Proceed through third light (at Jefferson Street), then take first left into hospital entrance. Connecticut Children's Medical Center is on your right as you enter the garage marked "Public Parking" on your left.

From West of Hartford Take I-84E to Exit 48B, "Capitol Ave." Follow road as it curves right and under one overpass. Take left at light onto Capitol Avenue and proceed through next traffic light. Turn right at second light (at horse and rider statue), then bear left immediately at fork onto Washington Street. At the fifth light, take a left into hospital entrance. Connecticut Children's Medical Center is on your right as you enter the garage marked "Public Parking" on your left.

Valet Parking: A valet parking service is available at the ambulatory entrance. Monday through Friday.

Directions to the Farmington, Glastonbury and Shelton locations

can be found by visiting the Connecticut Children's website at www.connecticutchildrens.org click on "Other Locations".



Welcome to Connecticut Children's Medical Center

Connecticut Children's Medical Center opened on April 2, 1996 and is the state's only freestanding children's hospital. Connecticut Children's is the home of the Department of Pediatrics of the University of Connecticut School of Medicine and is the center of the pediatric residency training program.

Physicians and staff from Connecticut Children's currently provide services at two hospitals in Hartford and Waterbury (Saint Mary's Hospital and Waterbury Hospital), and four specialty centers in Hartford, Farmington, Glastonbury and Shelton as well as at 19 practice locations. Connecticut Children's also has two neonatal intensive units located at Hartford Hospital and the UConn Health Center. Since its opening, Connecticut Children's has provided care to more than two million infants, children and adolescents through ambulatory visits and inpatient admissions.

This directory is intended for the use of physicians, nurses and other health care professionals and their office staff. It is designed to provide useful information about our services and to acquaint you with our staff.



We welcome your referrals and invite you to contact us for any information you might require.

Please visit our website: www.connecticutchildrens.org and view the section for referring providers. It includes a referral form and other tools.

We welcome feedback about our directory. Please use it often and let us know what you think! Email your comments to eberthel@connecticutchildrens.org.

CONNECTICUT CHILDREN'S MEDICAL CENTER

Executive Management Team

Martin J. Gavin

President and Chief Executive Officer

Gerald Boisvert, Jr

Executive Vice President and Chief Financial Officer

Paul H. Dworkin, MD

*Executive Vice President for Community Child Health,
Physician-in-Chief*

Fernando Ferrer, MD

Executive Vice President of Clinical Affairs, Surgeon-in-Chief

Theresa Hendricksen, RN, MS

Senior Vice President, Patient Care and Chief Nursing Officer

Cheryl Hoey, RN

Vice President, Clinical Services and Chief Nursing Officer

Ann Milanese, MD

President, Medical Staff

Dean Rapoza

*President, Connecticut Children's Specialty Group and
Vice President, Marketing and Business Development*

Betsy Rudden

Vice President, Human Resources

Martha Schall

President, Connecticut Children's Foundation

Kelly Styles

Vice President, Chief Information Officer

Ann Taylor

Senior Vice President and Corporate Counsel

[Table of Contents](#)

Connecticut Children's Locations

Hospitals

Hartford

Connecticut Children's Medical Center
282 Washington Street

Waterbury

Connecticut Children's – Waterbury
(at Saint Mary's Hospital)
56 Franklin Street

Specialty Care Centers

East Hartford

111 Founder Plaza, 19th Floor
Special Kids Support Center
Clinical Nutrition
Healthy Homes

Farmington

399 Farmington Avenue
Center for Motion Analysis
Digestive Diseases
Endocrinology
General Surgery
Hematology/Oncology
Neurology
Occupational and Physical Therapy
Orthopaedics
Pulmonary Medicine
Radiology
Sports Medicine
Urology

Farmington

11 South Road
Otolaryngology-Head & Neck Surgery
Audiology
Speech-Language

Glastonbury

310 Western Boulevard
Audiology
Cardiology
Digestive Diseases
Endocrinology
Hematology/Oncology
Neurology
Occupational and Physical Therapy
Orthopaedics
Otolaryngology-Head & Neck Surgery
Pulmonary Medicine
Radiology
Rheumatology
Speech-Language

Hartford

Connecticut Children's Medical Center
282 Washington Street
All Programs and Services

Hartford

100 Retreat Avenue - Medical Arts Building
Speech-Language Pathology

Shelton

4 Corporate Drive, Suite 282
Cardiology
Digestive Diseases
Endocrinology
Nephrology
Neurology
Orthopaedics
Pulmonary Medicine
Rheumatology
Urology

Connecticut Children's Locations

Practices

Danbury

Children's Health and Wellness Center
79 Sand Pit Road

Cardiology
Digestive Diseases
General Surgery
Hematology/Oncology

Fairfield

95 Reef Road

Digestive Disease, Hepatology and Nutrition

New Britain

The Hospital of Central Connecticut
100 Grand St.

Pulmonary Medicine

New London

Lawrence and Memorial Hospital
365 Montauk Avenue

Rheumatology

Putnam

Day Kimball Hospital
320 Pomfret Street

Cardiology

Stamford

Stamford Hospital's - Tully Health Center
32 Strawberry Hill Court

Rheumatology

Torrington

Mary Seymour Brooker Memorial /
Charlotte Hungerford Hospital
157 Litchfield Street

Endocrinology

Waterbury

Connecticut Children's – Waterbury
(at Saint Mary's Hospital)
56 Franklin Street

Cardiology

Massachusetts

Shriners Hospital
576 Carew Street
Springfield

Rheumatology

Medical Administration



Paul H. Dworkin, MD

Physician-in-Chief

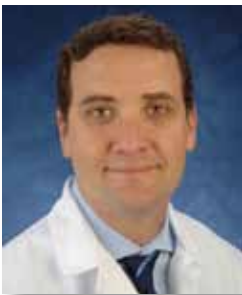
860.545.8566
860.545.8558 (fax)



Richard Weiss, MD

*Vice President, Medical Staff
(President Elect, Nov 12 to Nov 14)*

860.545.9520
860.545.9545 (fax)



Fernando Ferrer, MD

Surgeon-in-Chief

860.545.9899
860.545.9130 (fax)



Nathan J. Hagstrom, MD

Medical Director, Medical Staff



Ann Milanese, MD

*Vice President, Medical Staff
(President Elect, Nov 12 to Nov 14)*

860.545.9398
860.545.8605 (fax)

Medical Staff Services

860.545.8568
860.545.9132 (fax)

PROGRAM DESCRIPTION: The Medical Staff Services department is responsible for coordinating medical staff affairs to help the medical staff achieve compliance with The Joint Commission, Centers for Medicare and Medicaid, and other State and Federal Regulations. The department also provides administrative support to various medical staff committees and departments. Of key importance, it provides support in maintaining Medical Staff Bylaws, credentialing and privileging processes and assisting the medical staff in its role in performance improvement and peer review. The staff works closely with department and division directors to assure timely follow-up on issues pertinent to the medical staff and to serve as professional resources to the medical staff.

Referring Provider Relations

Referring Providers Relations Team

The mission of this team is to make Connecticut Children's viewed by referring providers, their patients and their families as the most accessible and service oriented children's hospital in the region. The team provides ongoing quality improvement to the referral process by implementing the necessary standards, processes and service guarantees and it conducts periodic online physician surveys (send your email address to dweber@connecticutchildrens.org to participate).

The team is comprised of Dr. Karen Rubin and Dean Rapoza (co-leaders), Deborah Weber (Project Leader), Dennis Crean, RN and Diann Bailey, RN. The Referring Provider Medical Advisory Board includes 10 pediatricians and APRNS from throughout Connecticut and meets quarterly.

Please call 860.545.9271 for more information.

Physician Liaison

The Physician Liaison provides doctors in the community with assistance to navigate through Connecticut Children's programs and services as they make referrals, consider diagnostic dilemmas or solve communications problems. It is also a channel for referring physicians to express feedback about Connecticut Children's. The Physician Liaison service operates on weekdays between 8am to 4pm.

Please call 1.888.543.7778 to page the Physician Liaison.

Pediatric Advice Line

This service provides after-hours telephone triage for the patients of community based physicians who enroll with the PAL. It is not open to the general public.

The Registered Nurses at a medical call center answer calls on behalf of the member physicians using standardized telephone triage guidelines, online computerization and the medical support of the physician on-call.

Please call 860.610.4248 for enrollment information

Office Triage Seminar

The Office Triage Seminar is a two-hour didactic program taught by an expert telephone triage nurse to RNs and LPNs at private practice offices.

The program educates office nurses about clinical guidelines, documentation, telephone assessment, telephone etiquette and risk management.

Please call 860.610.4250 for more information.

Connecticut Children's Medical News

A quarterly newsletter to keep referring providers informed of the latest medical services, research projects, medical staff changes, satellite activities and CME programs.

Please call 860.610.4248

Continuing Medical Education Related Services for Primary Care Providers

The Office of Continuing Medical Education, as an integral part of the Office of Academic Administration, facilitates continuing medical education programs for Connecticut Children's Medical Center staff and the regional pediatric community. The Office coordinates weekly Pediatric Grand Rounds, online Grand Rounds, the Andrulonis Child Mental Health Evening Lecture Series, the Pediatric Evening Lecture Series, ten sub-specialty rounds, Collaborative Co-Management Workshops, both live and online, and other one-day continuing education activities. Working with the CME staff, faculty present lectures at hospitals and offsite-locations around Connecticut.

Please call Diane Mouradjian, 860.610.4264 for further information.

PROFESSIONAL STAFF



Kenneth Spiegelman, MD

Medical Director

nspiege@harthosp.org

860.646.3003



Susan Duckworth

Director Academic

Administration Continuing

Medical Education

sduckwo@connecticutchildrens.org

860.610.4263

Veronica Tomlinson

Fellowship Program Coordinator

vtomlin@connecticutchildrens.org

860.545.9658

Quick Reference For Referrals And Admissions

	Telephone	Fax
Main Number	860.545.9000	
Administration	860.545.8550	860.545.8558
Admitting resident pager	860.220.4160	
Admitting/Outpatient	860.545.9220	
Admitting/Inpatient	860.545.9860	
Anesthesiology	860.545.9899	860.545.9130
Adolescent Health Services	860.545.9378	860.545.8661
Audiology	860.545.9642	860.545.9662
Cardiology	860.545.9400	860.545.9410
Cardiothoracic Surgery	860.545.9400	860.545.9410
Child and Family Support	860.545.9700	860.545.9695
Child Protection Program	860.545.9995	860.545.9996
Craniofacial Team	860.545.9360	860.545.9365
Critical Care/PICU	860.545.9850	860.545.9800
Day Surgery	860.545.9910	860.545.9888
Dentistry	860.545.9030	860.545.8001
Developmental/Behavioral	860.545.8589	860.545.9356
Discharge Planning	860.545.8575	860.545.8582
Emergency Department	860.545.9205	860.545.9134
Emergency Medicine	860.545.9200	860.545.9134
Endocrinology	860.545.9370	860.545.9371
Family Support/Social Work	860.545.9700	860.545.9695
Feeding Team	860.545.9889	860.545.8605
Food Allergy Program	860.545.9273	860.545.8661
Gastroenterology	860.545.9560	860.545.9561
Genetics	860.523.6464	860.523.6465
Gynecology	860.247.5447	860.728.5076
Hand Surgery	860.545.9100	860.545.9095
Hematology/Oncology	860.545.9630	860.545.9622
Homecare Network	860.545.8575	860.545.8582
Infectious Diseases	860.545.9490	860.545.9371
Inpatient Services	860.220.4168 (pager)	
6th floor unit	860.545.8730	860.545.8738
7th floor unit	860.545.8760	860.545.8769
8th floor unit	860.545.8800	860.545.8809
KIDS Line	800.243.1552	
Laboratory	860.545.2871	
Medical Records	860.610.5780	860.610.5785
Medical/Surgical 6	860.545.8730	860.545.8738
Medical/Surgical 7	860.545.8760	860.545.8769

	Telephone	Fax
Medical/Surgical 8	860.545.8800	860.545.8809
Neonatal Transport	860.679.2397	
Neonatology	860.545.8950	860.545.8945
Nephrology	860.545.9395	860.545.9914
Neurology	860.545.9460	860.545.9484
Neuropsychology	860.545.8667	860.545.9356
Neurosurgery	860.278.0070	860.522.6081
NICU (Neonatal Intensive)	860.545.9720	860.545.8945
Nutrition	860.545.8759	
Ophthalmology	860.409.0449	860.409.0551
Oral/Maxillofacial Surgery	860.545.9030	860.545.8001
Orthopaedics	860.545.9100	860.545.8842 860.545.8650
OT/PT	860.545.8600	860.545.8605
Otolaryngology	860.545.9650	860.545.9214
Pain Relief Program	860.545.9997	860.545.8331
Pediatric Transport	860.545.8989	
Physician Liaison	1.888.543.7778	860.545.9345
PICU (Pediatric Intensive)	860.545.9850	860.545.9800
Plastic Surgery	860.548.7338	860.524.2654
Primary Care	860.545-9300 860.545.9330 860.545.9333	860.545.9301
Psychiatry	860.545.8662	860.545.8661
Psychiatry HOTLINE	860.545.7493	
Psychiatry 24 HR. Emergency	860.545.7200	
Pulmonary Medicine	860.545.9440	860.545.9445
Radiology	860.545.9120	860.545.9117
Research	860.545.9905	860.545.9906
Rheumatology	860.545.9390	860.545.9914
SCAN Program	860.545.9995	860.545.9996
Sleep Lab	1.800.540.4485 860.545.9463 (info)	
Special Kids Support Center	860.610.4200	860.610.4201
Speech	860.545.9640	860.545.9662
Sports Medicine	860.674.0609	
Surgery	860.545.9520 860.545.9524	860.545.9545
Surgical Booking	860.545.9001	
Urology	860.545.9520	860.545.9545

Adolescent Health Services

LOCATION

Connecticut Children's Medical Center - 3A

TELEPHONE

860.545.9378

Fax

860.545.8661

PROGRAM DESCRIPTION: The Adolescent Health Service has a comprehensive approach to the health needs for adolescents and young adults between the ages of 12 and 21. Two central aims of the program are to help youth become more responsible for their own health care and to help parents with the transition of their children into adulthood. Support is also available for other health providers dealing with adolescents. The following services are provided: normative adolescent behavioral developmental; normative pubertal development; nutrition and growth, including disordered eating behaviors; well adolescent exam, sports participation exams; reproductive health care for males and females; managing chronic disease through adolescence; adolescents with special health needs; highrisk adolescents including runaways, gang involvement and drug and alcohol abuse; common issues in adolescents; female health issue and gynecologic disorders; breast disorders including pain and discharge; male health issues; muscle development; gynecomastia and urethral discharge or dysuria.



Schichor, Aric

Director

Brandeis University, 69, BA,
University of California at Davis,
75, MD

Internship/Residency:

Montefiore Hospital and Medical
Center, Pediatrics, 75-78

Faculty Appointment: Associate Professor, Pediatrics

Yordan, Elaine

University of Connecticut, 72, BA,
Autonomous University of Guadalajara, 76, MD

Internship/Residency: Northshore University Hospital,
77-80

Fellowship: Mount Sinai Hospital, 80-81, Adolescent
Medicine

Board Certification: Pediatrics, 83; Adolescent
Medicine, 94

Faculty Appointment: Professor, Pediatrics

PROFESSIONAL STAFF

Aric Schichor, MD, Director
aschich@connecticutchildrens.org

Elaine Yordan, MD
eyordan@connecticutchildrens.org

Anesthesiology

LOCATION

Connecticut Children's Medical Center - 3A

TELEPHONE

860.545.9899

Fax

860.545.9130

PROGRAM DESCRIPTION: Board certified anesthesiologists with pediatric anesthesia fellowship training serve as the nucleus for staffing the needs of Connecticut Children's Medical Center. We are committed to providing the highest quality patient and family focused care to children needing surgery, invasive procedures and pain management. The department manages anesthesia for the entire spectrum of surgical procedures including congenital heart surgery and trauma. We also provide care for children undergoing CT, MRI or MRA scans in addition to interventional procedures. Educational and research opportunities are provided to residents, nurses and medical students in an academically stimulating environment. Outside the operating room, members of the department provide consultative services for airway management, participate in the multi-disciplinary pain team and provide complimentary medical services, including acupuncture, to children of all ages.

Bonanni, Craig C.

Director

Johns Hopkins University, 78, BA
University of Pittsburgh, 82, MD

Internship/Residency: University of Pittsburgh, Anesthesiology, 82-85

Fellowship: Children's Hospital of Pittsburgh, 85-86

Board Certification: Anesthesiology, 86

Faculty Appointment: Assistant Clinical Professor, Anesthesiology

Ceruzzi, William

Massachusetts Institute of Technology, 78
BS University of Connecticut, 82, MD

Internship/Residency: Hartford Hospital, Transitional, 82-83; Hartford Hospital, Anesthesiology, 83-85

Fellowship: Washington Children's Hospital National Medical Center, Pediatric Anesthesiology, 86-87

Board Certification: Anesthesiology, 87

Faculty Appointment: Assistant Clinical Professor, Anesthesiology

Cortland, Edward T.

Trinity College, BA
95, University of Connecticut, MD, 99

Internship/Residency: Mount Auburn Hospital, Medicine, 99-01; University of Connecticut, Anesthesiology, 01-04

Fellowship: Yale Children's Hospital, Anesthesiology, 04-05

Board Certification: Anesthesiology, 06

Diamond, Peter

State University of New York (Binghamton), 78, BA
New York Medical College, 82, MD

Internship/Residency: University of Connecticut, Pediatrics, 82-85; Hartford Hospital, Anesthesiology, 87-89

Fellowship: Pittsburgh Children's Hospital, Pediatric Anesthesiology, 89-90 Board Certification: Pediatrics, 89, Anesthesiology, 90

Anesthesiology

Fernandez, Janice L.

Loretto Heights College, 79, BS
Tufts University, 87, MD

Internship/Residency: Faulkner Hospital, Medicine, 87-88; Beth Israel Hospital (Boston), Anesthesiology, 88-90

Fellowship: Children's Hospital (Boston), Pediatric Anesthesiology, 90-91

Faculty Appointment: Clinical Instructor, Anesthesiology

Garrison, John

Allegheny College, 84, BS
Wake Forest University, 88, MD

Internship/Residency: Hartford Hospital, Medicine 88-89; Hartford Hospital, Anesthesiology, 89-92

Fellowship: Children's Hospital (Boston), Pediatric Anesthesiology, 92-93

Board Certification: Anesthesiology, 93

Faculty Appointment: Assistant Clinical Professor, Anesthesiology

Hackman, Janet

University of Chicago, 74, BA
Rush Medical College, 81, MD

Internship/Residency: Baystate Medical Center, Pediatrics, 84-85; St. Elizabeth's Hospital, Anesthesiology, 85-87

Fellowship: Children's Hospital, Boston, Pediatric Anesthesiology, 91; OB Anesthesia, 92.

Board Certification: Anesthesiology, 92

Faculty Appointment: Assistant Clinical Professor, Anesthesiology

Indelicato, Mark

Adelphi University, 96, BS
SUNY-Stonybrook, 02, MD

Internship/Residency: SUNY-Stonybrook, 02-03, Medicine; Weil Cornell Medical Center, 03-06, Anesthesiology

Fellowship: Yale Children's Hospital, Anesthesiology, 06-07

Board Certification: Anesthesiology, 07

Kernisan, Gregory L.

Princeton University, 78, BA
State University of New York (Stony Brook), 82, MD

Internship/Residency: Nassau County Medical Center, Anesthesiology, 82-84; State University of New York (Stony Brook), Anesthesiology, 84-86

Fellowship: Children's Hospital of Cincinnati, Pediatric Anesthesiology, 86-87

Board Certification: Anesthesiology, 87

Faculty Appointment: Assistant Clinical Professor, Anesthesiology

Mathew, Anil

University of Alberta, 91, MD

Internship/Residency: Univ. of Alberta, Family Medicine, 91-94; UCONN/Hartford Hosp, Anesthesiology, 96-99;

Fellowship: Yale University, Pediatric Anesthesia, 2001.

Board Certification: Family Medicine, College of Family Physicians, Canada; Anesthesiology 02.

Faculty Appointment: Assistant Clinical Professor, Anesthesiology

Anesthesiology

Piserchia, Gerald G.

Dickinson College, 72, BS
Temple Medical College, 76, MD

Internship/Residency: Hartford Hospital, Pathology, 76-78; Hartford Hospital, Anesthesiology, 78-80

Fellowship: Children's Hospital Medical Center, Pediatric Anesthesiology, 80-81

Board Certification: Anesthesiology, 82

Prebluda, Jeffrey L.

Johns Hopkins University, 73, BA
University of Rochester, 78, MD

Internship/Residency: Massachusetts General Hospital, Pediatrics, 78-81; Massachusetts General Hospital, Anesthesiology, 81-83

Board Certification: Anesthesiology, 85

Faculty Appointment: Assistant Clinical Professor, Anesthesiology

Rossetti, Valerie A.

Bryn Mawr College, 76, BA
University of Connecticut, 81, MD

Internship/Residency: Medical College of Wisconsin, Emergency Medicine, 81-84; Hartford Hospital, Anesthesiology, 89-91

Fellowship: Children's Hospital (Boston), Pediatric Anesthesiology, 91-92

Board Certification: Emergency Medicine, 85; Anesthesiology, 93

PROFESSIONAL STAFF

Craig C. Bonanni, MD, Director
cbonann@connecticutchildrens.org

John Garrison, MD, Associate Director
jgarris@connecticutchildrens.org

William Ceruzzi, MD
wceruzz@harthosp.org

Edward Cortland, MD
ecortla@harthosp.org

Janice Fernandez, MD
jfernan@harthosp.org

Janet Hackman, MD
jhackma@harthosp.org

Mark Indelicato, MD
mindelicato@harthosp.org

Gregory Kernisan, MD
gkernis@harthosp.org

Anil Mathew, MD
amathew@harthosp.org

Gerald Piserchia, MD
gpiserc@connecticutchildrens.org

Jeffrey Prebluda, MD
jpreblu@harthosp.org

Valerie Rossetti, MD
vrosset@harthosp.org

Audiology Department

LOCATION

Connecticut Children's Medical Center – 2F
Satellite Locations: Avon, Glastonbury

TELEPHONE

860.545.9642

Fax

860.545.9662

PROGRAM DESCRIPTION: The Audiology Department at Connecticut Children's Medical Center specializes in assessment and monitoring of auditory function and audiological (re) habilitation including amplification and cochlear implant services for infants, children and adolescents. Our audiologists are experienced in assessing children of all ages. Assessment services include administration and interpretation of measures to assess and monitor hearing acuity in patients at risk for hearing loss due to:

- Medical conditions - recurring otitis media, head trauma, chemotherapy treatment involving potentially ototoxic medication, neonatal intensive care stay longer than five days, craniofacial anomalies, and infections such as meningitis or cytomegalovirus;
- Developmental conditions or syndromes – speech and language delays, Down syndrome, Usher's syndrome, Waardenberg syndrome;
- Signs and symptoms of hearing loss - noise exposure, family history of childhood hearing loss, tinnitus, impaired auditory discrimination.

Diagnostic and monitoring audiology services include: hearing screening, comprehensive diagnostic audiometry (incorporating tympanometry, immittance testing, and behavioral audiometry for children of all ages) otoacoustic emission studies, auditory electrophysiologic studies via brainstem auditory evoked response (BAER) and auditory steady state responses (ASSR), both sedated and non-sedated.

Amplification assessment and management for infants and children (birth to 18) are available from

the Audiology Department at Connecticut Children's. Amplification services include assessment and fitting of hearing aids for children with newly identified hearing loss, establishment and verification of outcomes and monitoring of hearing aid function, hearing aid repair, and replacement of hearing aids to provide longer-term hearing aid users with access to new technology. Families of children with hearing loss receive counseling in the care and use of hearing aids and communication strategies.

The Audiology Department at Connecticut Children's is also a cochlear implant center. Referrals are accepted for assessment of cochlear implant candidacy using a team approach, including collaboration with Otolaryngology. Cochlear implant mapping, maintenance – repair, and external device upgrades to make new technology available to longer-term cochlear implant users, are additional services that are also available.

PROFESSIONAL STAFF

Bruno, Nancy Smith, Au.D.
Manager, Audiology
Nbruno01@connecticutchildrens.org

Barbara E. Brown, MS, MEd.
Director
bbrown@connecticutchildrens.org

Ann Milanese, MD
Medical Director
amilane@connecticutchildrens.org

Michele Abrams, AuD, CCC-A
mabrams@connecticutchildrens.org

Robert Benoit, MA, CCC-A
bbenoit@connecticutchildrens.org

Andrea Ferrara, AuD, CCC-A
aferrara@connecticutchildrens.org

Julie Foulis, AuD., CCC-A
jfoulis@connecticutchildrens.org

Brian Knox, MS, CCC-A
bknox@connecticutchildrens.org

Audiology Department

Sarah "Meg" LaPointe, MS
Slapoin@connecticutchildrens.org

Melissa LaFleur, AuD, CCC-A
mlafleur@connecticutchildrens.org

Lori Liberti, MA, CCC-A
llibert@connecticutchildrens.org

Lisa Rylant, AuD., CCC-A
lrylant@connecticutchildrens.org

Bereavement Program

LOCATION

Connecticut Children's Medical Center - 5C

TELEPHONE

860.545.9700

Fax

860.545.9695

PROFESSIONAL STAFF

Priscilla Pandozzi-Valentin, LCSW
ppandoz@connecticutchildrens.org

PROGRAM DESCRIPTION: Bereavement Support Program offers support to patients and families who are dealing with end of life issues, or have suffered the death of a child. The services are coordinated by a multi-disciplinary team. The scope of services offered include psychosocial support when a death is imminent, including developmentally appropriate patient and sibling preparation, and assisting parents in creating a meaningful end-of-life/funeral experience.

At the time of death, our goal is to honor any family's special requests and provide keepsakes for the family if they so choose. These could include photos, handprints, footprints, and locks of hair. We also provide the family with bereavement literature. The literature, along with the keepsake items are placed in a special memory box for the family to take home.

Aftercare letters are sent to the families for a period of two years. These letters offer support and encouragement to bereaved families.

Support groups are offered to families who have experienced the death of their child. Please call for information on specific groups currently being offered. An annual memorial service and a holiday event are held to honor these children.

Cardiology

LOCATION

Connecticut Children's Medical Center - 2B

Satellite Locations:

Meriden, Middletown, Madison, Manchester, Old Saybrook, Putnam, Shelton, Torrington, Waterbury, Glastonbury

TELEPHONE

860.545.9400

After hours: 860.545.9400

Fax

860.545.9410

ECG Fax

860.545.9404

PROGRAM DESCRIPTION: The Division of Pediatric Cardiology provides family centered care for patients with congenital and acquired cardiac structural abnormalities and cardiac rhythm disturbances. The Division has a full range of image capabilities. Non-invasive studies include transthoracic and transesophageal echocardiography with continuous wave, pulse wave, and color Doppler interrogation as well as tissue Doppler imaging, and cardiac magnetic resonance imaging (MRI) and magnetic resonance angiography (MRA). Fetal cardiac ultrasound studies are performed for the diagnosis of congenital heart abnormalities and to help the family plan for appropriate post-natal care. Diagnostic invasive imaging and interventional cardiac catheterization studies include transcatheter closure of Atrial Septal Defects and Patent Ductus Arteriosus, angioplasty of stenotic valves, as well as endovascular coil occlusion of collateral vessels, and endovascular stent placement. The Division provides a full range of diagnostic studies and therapeutic interventions for cardiac rhythm abnormalities and syncope including electrocardiography, Holter monitoring, event and loop recording, treadmill or bicycle exercise studies that can be combined with pulmonary function studies, interventional electrophysiologic studies,

electrophysiologic ablation therapy, and tilt table studies. In collaboration with the Division of Cardiology at Hartford Hospital, our Division provides services for adults with congenital heart disease. The Division has recently started a new service in Preventive Cardiology and there are plans to expand it in the near future in collaboration with dietary support and other divisions within Connecticut Children's. There is a close collaboration with the Cardiovascular Surgical service, Anesthesia, and Pediatric Intensive Care in order to provide our patients with optimal pre- and post-operative care. The Division is dedicated to family centered care for children and adults requiring these specialized services.



Leopold, Harris B.

Director

Harvard College, 78, BA
State University of New York
(Upstate), 82, MD

Internship/Residency: University
of Connecticut, Pediatrics, 82-85

Fellowship: Columbia University, Pediatric Cardiology,
85-88

Board Certification: Pediatrics, 87; Pediatric
Cardiology, 88

Faculty Appointment: Associate Clinical
Professor, Pediatrics

Cardiology



Diana, Daniel J.

Fairfield University, 64, BS
New Jersey College of Medicine,
68, MD

Internship/Residency: Children's
National Medical Center,
Pediatrics, 68-70

Fellowship: Children's National Medical Center,
Pediatric Cardiology, 70-73

Board Certification: Pediatrics, 73; Pediatric
Cardiology, 77

Faculty Appointments: Clinical Professor, Pediatrics



Lapuk, Seth L.

University of Connecticut, 83
BS
University of Connecticut, 88, MD

Internship/Residency: Stanford
University Hospital, Pediatrics
88-91

Fellowship: Children's National Medical Center,
Pediatric Cardiology, 91-94

Board Certification: Pediatrics, 92

Faculty Appointment: Assistant Clinical Professor,
Pediatrics



Heller, Felice A.

Washington University, 85, BA
Washington University, 89, MD

Internship/Residency: Strong
Memorial Hospital, Pediatrics,
89-93

Fellowship: University of Virginia,
Pediatric Cardiology, 93-97

Board Certification: Pediatrics, 93; Pediatric
Cardiology, 97

Faculty Appointment: Assistant Clinical Professor,
Pediatrics



Toro-Salazar, Olga

Universidad Javeriana,
Colombia, 87, MD

Internship/Residency: University
of Connecticut, Pediatrics, 89-92

Fellowship: University of
Minnesota, Pediatric Cardiology
92-95

Board Certification: Pediatrics

Faculty Appointment: Assistant Clinical Professor,
Pediatrics

Cardiology

Wang, Alicia

Tufts University, 93, BS, Harvard Extension School, 96, MA
St. George's University, 01, MD

Internship/Residency: University of Maryland, Pediatrics, 01-04

Fellowship: Emory University, Pediatric Cardiology, 04-07

Board Certification: Pediatrics, 04

Faculty Appointment: Assistant Clinical Professor, Pediatrics



Wu Carlucci, Amy

Colgate University, 92, BA
Thomas Jefferson Medical College, 00, MD

Internship/Residency: Thomas Jefferson University, Hospital/A.I. duPont Hospital for Children, Pediatrics, 00-03

Fellowship: Children's Memorial Hospital/ Northwestern University, Pediatric Cardiology, 04-07

Board Certification: Pediatrics, 05; Pediatric Cardiology, 08

Faculty Appointment: Assistant Clinical Professor, Pediatrics

PROFESSIONAL STAFF

Harris B. Leopold, MD, Director
hleopol@connecticutchildrens.org

Daniel J. Diana, MD
ddiana@connecticutchildrens.org

Felice A. Heller, MD
fheller@connecticutchildrens.org

Seth L. Lapuk, MD
slapuk@connecticutchildrens.org

Olga Toro-Salazar, MD
otoro@connecticutchildrens.org

Alicia Wang, MD
awang@connecticutchildrens.org

Amy Wu Carlucci, MD
awu01@connecticutchildrens.org

Karen Mazarella, RN
kmazzar@connecticutchildrens.org

Katherine Walker, RN
kwalker@connecticutchildrens.org

Cardiovascular Surgery

LOCATION

Connecticut Children's Medical Center - 2B

TELEPHONE

860.545.9400

After hours: 860.545.9400

Fax

860.545.9410

PROGRAM DESCRIPTION: Connecticut Children's ability to provide comprehensive pediatric cardiovascular surgical care has expanded thanks to a collaborative arrangement with Children's Hospital Boston. The agreement calls for a pediatric cardiac surgeon from the Boston center to provide services at Connecticut Children's up to five days per month while Connecticut Children's recruits a full-time pediatric cardiac surgeon. The entire spectrum of congenital cardiac operations are performed including operations for complex single ventricle anatomy, complex neonatal repairs, and operations for teenagers and young adults with congenital heart disease. Connecticut Children's also has an affiliation with Boston Children's to share clinical and research protocols. Children's Hospital Boston is one of only a handful of centers that perform a very high volume of sophisticated pediatric cardiac surgical procedures. The relationship enables Connecticut Children's to perform even the most complex procedures, such as hypoplastic left heart repair, by drawing on the resources and experience of a regional quaternary center.

Case Management

LOCATION

Connecticut Children's Medical Center - 7033

TELEPHONE

860.545.8575

Fax

860.545.8582

PROFESSIONAL STAFF

Jennifer Fortin, RN, BSN
discharge planner, utilization management nurse
jfortin@connecticutchildrens.org

Kathleen Thibodeau RN, BSN
Discharge planner, utilization management nurse
kthibod@connecticutchildrens.org

PROGRAM DESCRIPTION: The Children's Homecare Network provides a formal link between the Medical Center and select home care providers to coordinate and improve home care services offered to patients and their families. Patients and providers may choose home care services provided by skilled pediatric staff that are family centered, and accessible statewide around the clock. Under the direction of Discharge Planning, network members are committed to collaboration in standards development, staff development, and quality management to ensure the delivery of high quality, cost effective, pediatric care in the home and the community.

CCMC School

LOCATION

170 Ridge Road, Wethersfield, CT 06109

TELEPHONE

860.947.4100

Fax

860.947.4110

PROGRAM DESCRIPTION: The CCMC School, an affiliate of Connecticut Children's Medical Center, offers special education services for children and adolescents from 5 to 21 years of age who require intensive intervention due to severe social, emotional, behavioral, physical, and/or cognitive deficits, including autism spectrum disorders and developmental disabilities. The goal of the school is to blend educational and clinical support services to foster independence so that students may be transitioned back to their home school districts or other less restrictive environments. The CCMC School also provides educational enrichment, tutorial support, and special education services to inpatients at Connecticut Children's Medical Center through the "School on Wheels". The CCMC School is approved by the Connecticut State Department of Education as a private special education facility. Referrals to the School are accepted through the student's Local Education Agency (LEA). Courtesy visits can be arranged by contacting the School Admissions Office.



FitzGerald, Patricia R.

University of Connecticut, 77, BA
Loyola College, 82, MA
St. Louis University, 86, PhD

Internship/Residency: Audie
Murphy Memorial Veteran's
Hospital, 83-84; Cardinal
Glennon Children's Hospital, 86;

Rivendell Children and Youth Center, 86-87

Board Certification: Licensed Psychologist, State of Connecticut, 89

Faculty Appointment: Adjunct Clinical Faculty,
University of Hartford



Kern, Michael B.

Wesleyan University, 77, BA
University of Colorado, Boulder,
86, PhD

Internship: University of
Colorado Health Sciences
Center, Denver, 85-86

Board Certification: licensed Psychologist, State of Connecticut 90

Ripepi, Francisco, MD

Universidad Centro Occidental, Lizandro Alvarado,
95, MD

Internship/Residence: Mount Sinai School of
Medicine, Elmhurst Program 2005

Fellowship: State University of New York,
Downstate 2007

Board Certification: Connecticut Department of
Health, Psychiatry Licensure

CCMC School

PROFESSIONAL STAFF

Barbara E. Brown, Director
bbrown@connecticutchildrens.org

Patricia Gerrity, Principal
pgerrit@connecticutchildrens.org

Patricia FitzGerald, PhD, Clinical Director
pfitzge@connecticutchildrens.org

Michael Kern, PhD, Clinical Coordinator
mkern@connecticutchildrens.org

Sharon Edricks, Assistant Principal
sedrick@connecticutchildrens.org

Michele Affrunti, Admissions Coordinator
maffrun@connecticutchildrens.org

Francisco Ripepi, MD, School Psychiatrist
fripepi@harthosp.org

Ann Milanese, MD, Medical Director
amilane@connecticutchildrens.org

Center for Motion Analysis

LOCATION

399 Farmington Ave. Farmington, CT 06032

TELEPHONE

860.284.0201

Fax

860.284.0213

PROGRAM DESCRIPTION: The Center for Motion Analysis provides comprehensive motion analysis services for treatment decision-making and evaluation for a variety of gait issues including neuromuscular disorders (cerebral palsy, traumatic brain injury, CVA, myelomeningocele, muscle disease) and general orthopaedic deformities (Blount's disease, torsional abnormalities, club feet and spinal deformities). An appropriate referral to the Center for Motion Analysis is a patient who is being considered for orthopaedic surgical intervention, tone management and bracing decision making for gait disorders as well as baseline documentation of function. Services are provided for both pediatric and adult patients and referrals are accepted from physicians at Connecticut Children's and throughout the northeast. A comprehensive motion analysis consists of any one or a selection of the following components: bi-planar and close-up video analysis, three dimensional motion analysis, three dimensional joint kinetic analysis, dynamic electromyography and dynamic foot pressures. The Center for Motion Analysis supports the Connecticut Children's Medical Center, Department of Orthopaedics, for both routine clinical services and a comprehensive research program including efforts in the following areas: 1) orthopaedic surgical outcomes for a variety of gait pathologies, 2) defining typical and pathological gait mechanics and 3) bracing evaluations. The Center for Motion Analysis supports Elite Sports Medicine in current research applications including understanding the mechanics and injury mechanisms of pitching injuries in adolescent through college pitchers. The Center for Motion analysis also supports research requests from industries and other educational institutions/hospitals that require comprehensive motion analysis services.

Sylvia Öunpuu

Director, Center for Motion Analysis

University of Waterloo, Waterloo, Ontario, Canada

Faculty of Applied Health Sciences: Kinesiology, 82, B.Sc. University of Waterloo, Waterloo, Ontario, Canada

Faculty of Applied Health Sciences: Biomechanics, 86, M.Sc.,

Faculty Appointments: Associate Professor, Department of Orthopaedics, University of Connecticut School of Medicine, Farmington, Connecticut

Assistant Professor, Department of Allied Health, University of Connecticut School of Medicine, Farmington, Connecticut

DeLuca, Peter A.

Medical Director, Center for Motion Analysis

Saint Peter's College, Jersey City, New Jersey, 77, BS Duke University Medical School, Durham North Carolina, 81, MD

Internship/Residency

Yale-New Haven Hospital (Pediatrics), New Haven, Connecticut 82, Yale-New Haven Hospital (Surgery), New Haven, Connecticut 83, Yale-New Haven Hospital (Orthopaedics), New Haven, Connecticut 83-86

Fellowship

Newington Children's Hospital, Newington Connecticut 86-87

Faculty Appointment:

Assistant Clinical Professor of Orthopaedic Surgery, Department of Orthopaedics and Rehabilitation, Yale University of School of Medicine, New Haven, Connecticut

Center for Motion Analysis

PROFESSIONAL STAFF

Sylvia Öunpuu, MSc
Director/Kinesiologist
sounpuu@connecticutchildrens.org

Peter A. DeLuca, MD
Medical Director

Dennis Tyburski, AS
dtyburs@connecticutchildrens.org

Katharine Bell, MS
kbell@connecticutchildrens.org

Melany Westwell, MS, PT
mwestwe@connecticutchildrens.org

Dawn Roller, PT
droller@connecticutchildrens.org

Matthew Solomito, BSME
msolomito@connecticutchildrens.org

Jennifer Rodriguez, PT
Jxrodri@connecticutchildrens.org

Kelly VanVlack, DPT

ADMINISTRATIVE STAFF

Wanda Vasquez
wvasque@connecticutchildrens.org

ORTHOPAEDIC STAFF

Jeffery D. Thomson, MD
jthomso@connecticutchildrens.org

Carl Nissen, MD
cnissen@connecticutchildrens.org

Janet Zahradnik, MD
jzahrad@connecticutchildrens.org

Kristan A. Pierz, MD
kpierz@connecticutchildrens.org

Elizabeth Weber, MD
Eweber@connecticutchildrens.org

Mark Lee, MD
Mlee01@connecticutchildrens.org

Child Life

LOCATION

Connecticut Children's Medical Center - 5C

TELEPHONE

860.545.9700

Fax

860.545.9695

PROGRAM DESCRIPTION: The Child Life Program works to identify and address the social and emotional needs of children and their families within the healthcare setting. Child Life Specialists are integrated members of the health care team who facilitate coping and support the emotional needs of hospitalized children through a variety of interventions such as therapeutic play, pre-admission tours and procedural support. The Child Life Program works to promote positive development and seeks to provide opportunities for play, socialization, mastery and normalcy in a physically and emotionally safe environment. Child Life Specialists are available to prepare children for medical procedures and support their coping during painful and invasive situations. Department members facilitate various support groups and contribute to multidisciplinary committees throughout the hospital. Child Life also maintains the inpatient playrooms and provides therapeutic activities for diversion and expression of feelings and emotions.

PROFESSIONAL STAFF

Paula Abrahamson, MA, CCLS
pabraha@connecticutchildrens.org

Colleen Brown, MS, CCLS
cbrown05@connecticutchildrens.org

Melanie Duclos, CCLS, MSW
mduclos@connecticutchildrens.org

Rebecca Haynes, BA, CCLS
rhaynes@connecticutchildrens.org

Lindsay Labrie, MEd, CCLS
llabrie@connecticutchildrens.org

Michele O'Neill, MA, CCLS
moneill@ccmckdis.org

Donna Sevas, MEd, CCLS
dsevas@connecticutchildrens.org

Christine Tatem, MEd, CCLS
ctatem@connecticutchildrens.org

Kathy Tokarz, BA, CCLS
ktokarz@connecticutchildrens.org

Mary Ellen Welker, BS, CCLS
mwelker@connecticutchildrens.org

Child Protection Program

LOCATION

Connecticut Children's Medical Center - 5C

TELEPHONE

860.545.9995 - 8 am-4:30 pm

**All calls/consults received outside of business hours are returned the next business day.*

Fax

860.545.9596

PROGRAM DESCRIPTION: The Child Protection Program at Connecticut Children's Medical Center includes the Child Protection Team and SCAN (Suspected Child Abuse and Neglect) Program, which provides medical, forensic, and psychosocial consultation to medical providers at the medical center. The SCAN Program is part of Hartford Regional Child Abuse Services and is a collaborative effort between Connecticut Children's and the Aetna Children's Center at Saint Francis Hospital and Medical Center. There are three modes of treatment including medical diagnostic services and forensic evaluations; psychosocial services for non-offending family members; and therapy for the child. The program provides follow-up for patients of Connecticut Children's as well as for those requested by the State Department of Children and Families for medical evaluation. A family advocate provides crisis intervention; case management; parent education; assistance with legal processes and referral for ongoing mental health issues. Counseling services are available from a therapist. The SCAN Program works closely with the Child Protection Team, a multidisciplinary team that acts as a resource for staff who witness or suspect child abuse at the medical center.



Livingston, Nina S.

Swarthmore College, 88, BA
Harvard Medical School, 95 MD

Internship/Residency: University of Washington/Children's Hospital and Medical Center, 95-98, Pediatrics

Board Certification: Pediatrics, 98

Faculty Appointment: Assistant Professor, Pediatrics



Soltis, Michael

Philadelphia College of Pharmacy and Science, 96, BS
University of Louisville School of Medicine, 01, MD

Internship/Residency: Connecticut Children's Medical Center, Pediatrics, 01-04

Fellowship: Yale-New Haven Hospital, Pediatric Emergency Medicine, 04-07

Board Certification: Pediatrics, 06

Faculty Appointment: Assistant Professor, Pediatrics

PROFESSIONAL STAFF (SCAN PROGRAM)

Nina Livingston, MD
nliving@connecticutchildrens.org

Michael Soltis, MD
msoltis@connecticutchildrens.org

Ann Marriott-Sitek, LCSW
amarrio@connecticutchildrens.org

PROFESSIONAL STAFF (CHILD PROTECTION TEAM)

Patricia McIntosh, MSW, MPH, Chair
pmcinto@connecticutchildrens.org

[Table of Contents](#)

Child & Family Support Services

LOCATION

Connecticut Children's Medical Center - 5C

TELEPHONE

860.545.9700

Fax

860.545.9596

PROFESSIONAL STAFF

Patricia A. McIntosh, MSW, MPH, Manager
pmcinto@connecticutchildrens.org

PROGRAM DESCRIPTION: Child and Family Support Services address the psychosocial needs of our patients and their families. We work to reduce the stress related to hospitalization and surgery, and to help children and their families effectively manage the challenges of an illness, injury, or disability. Child and Family Support Services comprises Family Support Clinicians (i.e. Social Work), Child Life Specialists, Pastoral Care Services, Interpretation Services and the ArtReach Program.

We assess the needs of patients and families and provide supports as necessary. This may include finding resources (e.g. housing, equipment, transportation), providing counseling/psychotherapy, managing crises related to child abuse, facilitating pain management techniques and procedural support for anxious children, providing oral interpretation and written translation for Spanish-speaking families, coordinating interpretation needs for the Deaf and Hard of Hearing and others with Limited English Proficiency, and ensuring the availability of pastoral services to attend to the spiritual needs of families, and allowing the patients an outlet through art activities, visiting artists and community art throughout the hospital.

Clinical Nutrition Services

LOCATION

Connecticut Children's Medical Center - 2K

TELEPHONE

860.545.8759

Fax

860.545.9040

PROGRAM DESCRIPTION: The Department of Clinical Nutrition Services at Connecticut Children's Medical Center consists of registered dietitians trained and experienced in the care of pediatric patients. These nutrition experts provide medical nutrition therapy, nutrition counseling and nutrition education to children and their families with a simple request/referral from the child's primary care provider. Areas of medical nutrition therapy and counseling include: home parenteral nutrition management; home tube feeding management; growth assessment; failure to thrive; feeding difficulties and intolerances; developmental delays; Ketogenic Diet; renal disease; cardiac disease; cholesterol management; ulcerative colitis; Crohn's disease; cancer; HIV and AIDS; diabetes; bronchopulmonary dysplasia; cystic fibrosis; food allergy; juvenile rheumatoid arthritis; sports nutrition; obesity/weight management (T.E.A.M. Club); premature infant nutrition; general childhood nutrition; general adolescent nutrition and vegetarian nutrition.

PROFESSIONAL STAFF

Claire Dalidowitz, MS, MA, RD, CD-N
Clinical Nutrition Services Manager
cdalido@connecticutchildrens.org

Gina Barbetta, MS, RD, CDE
gbarbet@connecticutchildrens.org
(Inpatient float, Feeding Team)

Beth Chatfield, MS, RD
bchatfi@connecticutchildrens.org
(GI, Ketogenic diet)

Patricia Esposito, MS, RD, CD-N
pesposi@connecticutchildrens.org (NICU)

Michelle Fraser RD, CNSD
mlfraser@connecticutchildrens.org
(Med Surg, TEAM Club)

Connie Galluzzo, RD (Cystic Fibrosis)

Diane Lombardi RD
ddlomba@connecticutchildrens.org
(Feeding Team, Outpatient)

Deborah Morgan RD, CNSD
dmorgan@connecticutchildrens.org
(PICU)

Elaine Shemenski, RD
eshemen@connecticutchildrens.org
(Endocrine, Feeding Team)

Elizabeth Spadory, RD
(Med Surg)

Kate Vance, RD, CNSD
kvance@connecticutchildrens.org (GI)

DIET TECHNICIANS

Jean Hanlan, Rebecca Parent, Marilyn Taggett,
Robin Tobias, Isabel Lucco

NUTRITION ASSISTANT

Mildred Reyes

Craniofacial Team

LOCATION

Connecticut Children's Medical Center - 2L

TELEPHONE

860.545.9360

After hours: 860.545.9360

Fax

860.545.9365

PROGRAM DESCRIPTION: The Team functions to coordinate and to provide multidisciplinary specialty care for children with congenital defects of the head and neck or acquired defects secondary to trauma and/or oncology. Examples of these disorders include: cleft lip, cleft palate, cranial and facial asymmetry, craniosynostosis, microtia, nasal and jaw deformities, other oral and facial asymmetry and facial abnormalities, as well as speech disorders associated with hypernasality and/or velopharyngeal incompetence. The Team's newborn outreach program will see the parents and affected infant in the birthing hospital within 24 hours after birth for diagnosis, feeding assistance, and family support. We also provide pre-natal instruction, counseling, and support to families when it is determined via ultrasound that they have an infant developing with a cleft lip and/or palate. Follow up, genetic counseling and specialty care is coordinated through the Connecticut Children's Medical Center Craniofacial Team throughout childhood, while primary care is maintained in the local community.



Castiglione, Charles L.

Co-Director

Yale University, 77, BA
Columbia University, 81, MD

Internship/Residency: Hartford Hospital, Surgery, 81-86; Hospital of University of Pennsylvania Plastic Surgery, 86-88

Board Certification: Surgery, 87; Plastic Surgery, 90

Faculty Appointment: Assistant Clinical Professor, Oral & Maxillofacial Surgery; Associate Clinical Professor, Surgery



Kanev, Paul M.

Co-Director

Dickinson College, 75, BS
Washington University, 77, MS
Temple University Medical School, 81, MD

Internship/Residency: University of Virginia, 81-82, Surgery; 82-83, Neurosurgery; New England Medical Center, Pediatrics, 83-85; University of Washington, 85-89, Neurosurgery

Fellowship: Children's Hospital and Medical Center, 89-90, Pediatric Neurosurgery

Board Certification: Pediatrics, 90; Neurosurgery, 93; Pediatric Neurosurgery, 97, Recert, 08

Faculty Appointment: Clinical Professor, Neurosurgery

Craniofacial Team



Mabry, Kelly M.
*Program Manager/Speech
Pathologist*

Southern Connecticut State
University, '86 BA, '88 MA

University of Connecticut, 2002,
PhD

Faculty Appointment: Instructor, Clinical Surgery

Division of Pediatric Dentistry, Dept of Craniofacial
Sciences, School of Dental Medicine, UCONN

PROFESSIONAL STAFF

Charles L. Castiglione, MD
Co-Director
ccastiglione@ctsurgical.com

Paul Kanev, MD
Co-Director
pkanev@connecticutchildrens.org

Kelly Mabry, PhD, CCC/SLP
Program/Care Manager
kmabry@connecticutchildrens.org

Richard Bevilacqua, MD
ctmaxillofacial@sbcglobal.net

Terri Brown, MSW, CCSW
terri3079@aol.com

Alex C. Cech, MD
acech@ctsurgical.com

Ira M. Greene, DDS
iragreenedds@sbcglobal.net

Deepa Limaye, MD
plimaye@pol.net

Jonathan Martin, MD
jmartin03@connecticutchildrens.org

L. Nicole Murray, MD
lnmurray@connecticutchildrens.org

Deborah Redford-Badwal, DDS, PhD
rbadwal@nso1uchc.edu

Elena-Lee Ritoli, DMD
BracesOnBraceRd@@snet.net

Scott R. Schoem, MD
sschoem@connecticutchildrens.org

Tulio Valdez, MD
tvaldez@connecticutchildrens.org

Hope Lavery
hlavery@connecticutchildrens.org

Glendalee Leeman, CMA
gleeman01@connecticutchildrens.org

Michael Mccarter
mmccart@connecticutchildrens.org

Critical Care/Pediatric Intensive Care

LOCATION

Connecticut Children's Medical Center - 3E

TELEPHONE

PICU desk: 860.545.9850

Division office: 860.545.9805

Triage/Transport: 860.545.8989

Fax

860.545.9800

PROGRAM DESCRIPTION: The Pediatric Intensive Care Unit is a 18-bed Medical/Surgical unit where approximately 750 critically ill children per year receive care and treatment. The staff consists of eight PICU physicians, a unit manager, a unit nursing director, 50 staff nurses, three unit secretaries and four unit aides. Patients in the PICU are managed by a multi-disciplinary group including: PICU staff physicians and pediatric subspecialists, specially certified nurses, pediatric respiratory therapists, child life and rehabilitation specialists, nutritionists, pharmacists, and social workers. Our goal is to provide comprehensive family-centered care in an acute care setting. A PICU Staff physician is always on call and available to both answer questions and to facilitate the transfer and admission of patients requiring critical care and intensive monitoring.



Zucker, Aaron R. - Director

Rensselaer Polytechnic Institute,
74, BS

Hahnemann Medical College, 78, MD

Internship/Residency: Wyler
Children's Hospital (Chicago),
Pediatrics, 78-81

Fellowship: Children's National Medical Center,
Pediatric Critical Care, 81-83

Board Certification: Pediatrics, 83; Pediatric Critical
Care, 87; Recertified, 95 & 2002

Faculty Appointment: Professor, Pediatrics



Carroll, Christopher L.

Georgetown University, 92, BS
Georgetown University, 92, MD

Internship/Residency: Children's
Memorial Hospital (Chicago),
Pediatrics, 96-99

Fellowship: Children's Memorial
Hospital (Chicago), Pediatric Critical Care, 99-02

Board Certification: Pediatrics, 01

Faculty Appointment: Assistant Professor, Pediatrics



Comeau, Leonard L.

Brown University, 87, BA
Brown University, 91, MD

Internship/Residency: Maine
Medical Center, Pediatrics,
91-94

Fellowship: Children's Hospital
of Philadelphia, Critical Care Medicine, 94-97

Board Certification: Pediatrics, 95

Faculty Appointment: Assistant Professor, Pediatrics



Cowl, Allison S.

Cornell University, 96, BA
University of Vermont, 01, MD

Internship/Residency: University
of Massachusetts, Pediatrics,
01-04

Fellowship: Massachusetts
General Hospital, Pediatric Critical Care, 04-08

Board Certification: Pediatrics, 05

Faculty Appointment: Assistant Professor, Pediatrics

Critical Care/Pediatric Intensive Care



Fisher, Daniel G.

Boston College, 81, BS
University of Massachusetts,
85, MD

Internship/Residency: University
of California, Irvine, Pediatrics,
85-88

Fellowship: University of California, Irvine, Pediatric
Critical Care, 88-91

Board Certification: Pediatrics, 89, Recertification, 99;
Pediatric Critical Care, 92, Recertification, 99;

Faculty Appointment: Associate Professor, Pediatrics



Schlott, Heather A.

Brown University, 96, BA
Brown University, 00, MD

Internship/Residency:
Dartmouth-Hitchcock Medical
Center, Pediatrics, 00-03

Fellowship: Children's Hospital
of Pittsburgh, Pediatric Critical Care, 04-07

Board Certification: Pediatrics, 04

Faculty Appointment: Assistant Professor, Pediatrics



Silverman, Adam M.

Tufts University, 92, BA
Boston University, 94, MA
Chicago Medical School, 98, MD

Internship/Residency: Children's
National Medical Center,
Pediatrics, 98-02

Fellowship: Children's Hospital Los Angeles Pediatric
Emergency Medicine, 02-06 Children's Hospital Los
Angeles Pediatric Critical Care Medicine, 02-06

Board Certification: Pediatrics, 02

PROFESSIONAL STAFF

Aaron R. Zucker, MD, Director
azucker@connecticutchildrens.org

Christopher Carroll, MD
ccarrol@connecticutchildrens.org

Leonard Comeau, MD
lcomeau@connecticutchildrens.org

Allison S. Cowl, MD
acowl@connecticutchildrens.org

Daniel Fisher, MD
dfisher@connecticutchildrens.org

Heather A. Schlott, MD
hschlott@connecticutchildrens.org

Adam Silverman, MD
asilver@connecticutchildrens.org

Kathy Morgan-Gorman, RN
Unit Manager
kmorgan@connecticutchildrens.org

Dentistry

LOCATION

Connecticut Children's Medical Center - 1C

TELEPHONE

860.545.9030

After hours: 860.825.2614

Fax

860.545.8001

PROGRAM DESCRIPTION: The Division of Pediatric Dentistry provides comprehensive primary and specialty dental care for children. This includes preventive, restorative, endodontic, periodontic, and surgical dental treatment in a traditional outpatient setting and in the operating room under general anesthesia. The Division also provides consultations and medically adjunctive dental treatment for inpatients. Significant expertise is available in the areas of: emergency treatment of dentofacial trauma, craniofacial and dental anomalies, dentofacial growth and development, managing behavior for physically or medically challenged children in the dental environment, minor orthodontic problems, and dental public health issues affecting children.



Skinner, Richard J.
Director

University of Bridgeport, 73, BA
University of Connecticut,
77, DMD

Internship/Residency: Indiana
University, Pediatric Dentistry,
77-79

Board Certification: Pediatric Dentistry, 89

Faculty Appointment: Associate Professor,
Pediatric Dentistry

PROFESSIONAL STAFF

Mina Mina, DMD, MSD, PhD, UConn Division Chair
mina@nso1.uhc.edu

Richard J. Skinner, DMD, Director
rskinne@connecticutchildrens.org

Gregory P. Mathieu, DDS, Residency Director
gmathie@connecticutchildrens.org

Paulette Chung, RDH
pchung01@connecticutchildrens.org

Deborah Redford-Badwal, DDS, PhD
Dental Director CCMC Craniofacial Team
rbadwal@nso1.uhc.edu

Jorge Rabat, DDS

Zheng Xu, DDS, PhD
xu@uchc.edu

Yu-Hsiung Wang, DDS, PhD
ywang@nso.uhc.edu

Joanna Douglass, BDS, DDS
douglass@nso.uhc.edu

Bina Katechia, BDS, MSc
bkatechia@gde.uhc.edu

Moises Salas, DDS

Antonio Lepore, DDS

Andrew Poole, BDS, MS, PhD

Gary Schulman, DMD

Jeanmarie Cosgrove, DMD

Mitra Kabakoff, DDS

Glenn Koehler, DDS

Lawrence Lee, DDS

Developmental & Behavioral Pediatrics

LOCATION

Connecticut Children's Medical Center - 5F

TELEPHONE

860.545.8589

Fax

860.545.8605

PROGRAM DESCRIPTION: Developmental Pediatrics provides consultation to children with developmental disorders including autism/pervasive developmental disorders and developmental delays. We maintain active service and teaching roles in the primary care center and in pediatric sub-specialties. We provide the medical leadership to the Special Kids Support Center, and Education and Rehabilitation Services, which includes Occupational and Physical Therapy, Speech/Language Pathology and Audiology, and the CCMC School. At Connecticut Children's Medical Center, Developmental Pediatrics provides medical leadership for the acute inpatient rehabilitation team and the feeding team.



Milanese, Ann
Division Chief

Fordham University, 75, BS
Loyola University, 78, MD

Internship/Residency: University of Connecticut, Pediatrics, 78-81

Fellowship: University of Connecticut, Developmental Pediatrics, 78-81

Board Certification: Pediatrics, 84 Sub-Specialty Board Certification: Developmental & Behavioral Pediatrics, 02

Faculty Appointment: Associate Professor, Pediatrics



Dworkin, Paul

Rutgers University, 69, BA
The Johns Hopkins University School of Medicine, 73, MD

Internship/Residency: Children's Hospital, Boston, Pediatrics, 73-76

Fellowship: Children's Hospital, Boston, Ambulatory Medicine (Developmental-Behavioral Pediatrics), 76-78

Board Certification: Pediatrics, 79; Developmental and Behavioral Pediatrics, 02

Faculty Appointment: Professor and Chair, Department of Pediatrics, University of Connecticut School of Medicine



Greenstein, Mark A.

Dartmouth College, 75, BA
University of Pittsburgh, 79, MD

Internship/Residency: State University of New York (Upstate), Pediatrics, 79-82

Fellowship: University of Connecticut, Genetics & Child Development, 82-86

Board Certification: Pediatrics, 84; Medical Genetics, 87

Faculty Appointment: Associate Professor, Pediatrics; Assistant Professor, Obstetrics

Developmental & Behavioral Pediatrics



Schlegel, Sarah

Wesleyan University, 98, BA
University of Connecticut, 03,
MD

Internship/Residency: Stony
Brook University Hospital,
Pediatrics, 03-06

Fellowship: Yale University, Developmental-Behavioral
Pediatrics, 06-09

Board Certification: Pediatrics, 06

Faculty Appointment: Assistant Professor, Pediatrics

PROFESSIONAL STAFF

Ann Milanese, MD
Division Chief
amilane@connecticutchildrens.org

Paul Dworkin, MD
pdworki@connecticutchildrens.org

Mark Greenstein, MD
mgreens@connecticutchildrens.org

Sarah Schlegel, MD
sschlegel@connecticutchildrens.org

Digestive Diseases, Hepatology and Nutrition

LOCATION

Connecticut Children's Medical Center - 2K

Satellite Locations:

Farmington, Glastonbury, Meridan,
Norwich, Shelton

TELEPHONE

860.545.9560

After hours: 860.545.9560

Physician line during day: 860.545.9565

Fax

860.545.9561

PROGRAM DESCRIPTION: The division provides consultative care to infants, children, and adolescents with disorders of the gastrointestinal and hepatobiliary systems, as well as with chronic nutrition disorders associated with chronic illnesses such as cerebral palsy, cancer, immunodeficiency, etc. Utilizing a team of physicians, specialty nurses and nutritionists, the division attempts to address the pertinent medical issues and impact of disease on the child and family. Areas of special interest include inflammatory bowel disease, functional gastrointestinal disorders, gastroesophageal reflux, allergic bowel disease, food allergy, and acute and chronic liver disorders.



Hyams, Jeffrey S.

Director

Brandeis University, 71, BA
University of Pennsylvania,
75, MD

Internship/Residency: Children's
Hospital (Boston), Pediatrics,
75-78

Fellowship: Children's Hospital (Boston), Medicine,
Gastroenterology, 78-80

Board Certification: Pediatrics, 91; Pediatric
Gastroenterology, 91, Recertification, 97, 04

Faculty Appointment: Professor, Pediatrics



Emerick, Karan M.

Fairfield University, 88, BS
Northwestern University
Graduate School and the
Feinberg School of Medicine,
05, MSCI
University of Connecticut School
of Medicine, 92, MD

Residency/Internship: Children's Hospital of
Philadelphia, 92-95

Fellowship: Children's Hospital of Philadelphia,
Research, 96-98; Children's Hospital of Philadelphia,
Clinical, 95-96

Board Certification: Pediatrics, 99, Recertification
03; Pediatric Gastroenterology and Nutrition,
99, Recertification 07; Certificate of Advanced
Qualification in Transplant Hepatology, 07

Faculty Appointment: Associate Professor, Pediatrics

Digestive Diseases, Hepatology and Nutrition



Sayej, Wael

College of Mount Saint Vincent,
96, BS
Fatima College of Medicine,
Philippines, 00, MD

Internship/Residency:
UMDNJ-New Jersey Medical
School, Pediatrics, 04-6

Fellowship: Women and Children's Hospital of Buffalo,
Pediatric Gastroenterology and Nutrition, 06-09

Faculty Appointment: Assistant Professor, Pediatrics



Sylvester, Francisco A.

Universidad Peruana Cayetano
Heredia, 85, MD

Internship/Residency: State
University of New York
(Brooklyn), Pediatrics, 87-90

Fellowship: Hospital for Sick
Children (Toronto), Pediatric Gastroenterology, 91-95

Board Certification: Pediatrics, 92, Pediatric
Gastroenterology, 04

Faculty Appointment: Associate Professor, Pediatrics



Zeisler, Bella

Barnard College, Columbia
University, 97, BA
Georgetown University, 99, MS
SUNY-Stony Brook School of
Medicine, 03, MD

Internship/Residency: NYU
Medical Center, Pediatrics,
03-06

Fellowship: Cincinnati Children's Hospital Medical
Center, Pediatric Gastroenterology, 06-09

Faculty Appointment: Assistant Professor, Pediatrics



Zeiter, Donna K.

Pennsylvania State University,
86, BA
Johns Hopkins University,
90, MD

Internship/Residency: Johns
Hopkins, Pediatrics, 90-93

Fellowship: Children's Hospital of Philadelphia,
Pediatric Gastroenterology, 93-96

Board Certification: Pediatrics, 96; Pediatric
Gastroenterology, 04

Faculty Appointment: Assistant Professor, Pediatrics

PROFESSIONAL STAFF

Jeffrey Hyams, MD, Director
jhyams@connecticutchildrens.org

Karan Emerick, MD
kemerick@connecticutchildrens.org

Wael Sayej, MD
wsayej@connecticutchildrens.org

Francisco Sylvester, MD
fsylves@connecticutchildrens.org

Bella Zeisler, MD
bzeisler@connecticutchildrens.org

Donna Zeiter, MD
dzeiter@connecticutchildrens.org

Jodi Klekotka, APRN
jklekot@connecticutchildrens.org

Kristin Philipp, APRN
kphilip@connecticutchildrens.org

Heidi Sweeney, APRN
hsweene@connecticutchildrens.org

Beth Chatfield, RD
bchatfi@connecticutchildrens.org

Lauren Arata, RD
larata@connecticutchildrens.org

[Table of Contents](#)

Digestive Diseases, Hepatology and Nutrition

Debbie Morgan, RD
dmorgan@connecticutchildrens.org
(IBD Center coordinator)

Katie Samela, RD
ksamela@connecticutchildrens.org

Kate Vance, RD
kvance@connecticutchildrens.org

Nancy Etienne, RN
netienn@connecticutchildrens.org

Karen Pallotti, RN
kpallotti@connecticutchildrens.org

Ingrid Triantafylidis, RN
itriant@connecticutchildrens.org

Lori White, RN
ljwhite@connecticutchildrens.org

Education & Rehabilitation Services

LOCATION

Connecticut Children's Medical Center - 5F

TELEPHONE

860.545.9398

Fax

860.545.8605

PROGRAM DESCRIPTION: The Department of Education and Rehabilitation Services includes Occupational and Physical Therapies, Speech-Language Pathology, Audiology, the CCMC School, the Special Kids Support Center, and the Center for Motion Analysis. With the exception of the Center for Motion Analysis, which is aligned with the Department of Orthopaedics, all other areas work in collaboration with Developmental and Behavioral Pediatrics to provide evaluation, consultation, and treatment services to children with medical/physical, developmental, emotional, and cognitive disorders. The structure of the overall department facilitates cross training of staff, processing of referrals, and the development of multidisciplinary programs at Connecticut Children's Medical Center. These include the Feeding Team, the Autism Spectrum Assessment Program (ASAP) and the Acute Inpatient Rehabilitation Service. Referrals are accepted from physicians, parents/guardians, school systems and other agencies depending upon the service requested. Where appropriate, both direct inpatient and outpatient services and consultation are provided. Service delivery may occur at the Medical Center in Hartford, at the various satellite locations located in Glastonbury, Farmington, and Avon, at Founders Plaza In East Hartford (Special Kids Support Center) or at the CCMC School in Wethersfield.



Brown, Barbara E.

Director

City University of New York -
Queens College, 69, BA

City University of New York -
Brooklyn College, 71, MS

University of Hartford, 93, MEd

The Hartford Graduate Center, R.P.I., 94, M.S.,
Healthcare Management



Milanese Ann M.

*Medical Director, Education
and Rehabilitation Services*

Fordham University, 75, BS
Loyola University, 78, MD

Internship/Residency: University
of Connecticut, Pediatrics, 78-81

Fellowship: University of Connecticut, Developmental
Pediatrics, 78-81

Board Certification: Pediatrics, 84

Sub-Specialty Board Certification: Developmental &
Behavioral Pediatrics, 02

Faculty Appointment: Associate Professor, Pediatrics

Education & Rehabilitation Services

PROFESSIONAL STAFF

Barbara E. Brown, MS, MEd
Director, Education and Rehabilitation Services
bbrown@connecticutchildrens.org

Ann Milanese, MD
Chief, Division of Developmental-Behavioral Pediatrics
amilane@connecticutchildrens.org

Sarah Schlegel, MD
sshlegel@connecticutchildrens.org

Nancy Bruno, MS, CCC-A/SLP, FAAA
Manager, Audiology
nbruno01@connecticutchildrens.org

Karen Hayduski
Practice Manager,
Education and Rehabilitation Services
khaydus@connecticutchildrens.org

Jeanne R. Kagan, MA, OTR
Manager, Occupational Therapy
jkagan@connecticutchildrens.org

Virginia McGoey-Radshaw, M.Ed., CCC-SLP
Manager, Speech-Language Pathology
vradshaw@connecticutchildrens.org

Sylvia Ounpuu, M.Sc.
Director/Kinesiologist, Center for Motion Analysis
sounpuu@connecticutchildrens.org

Scott Van Epps, PT, MS, PCS, ATP
Manager, Physical Therapy
svanepp@connecticutchildrens.org

Patricia Fitzgerald, PhD
Clinical Director, CCMC School
pfitzge@connecticutchildrens.org

Patricia L. Gerrity, MA
Principal, CCMC School
pgerrit@connecticutchildrens.org

Emergency Medicine

LOCATION

Connecticut Children's Medical Center -1N

TELEPHONE

860.545.9200

Physician Referral:.....860.545.9205

Transport Line:..... 860.545 8989

4-6 Hour Observation Unit:860.545.9150

Administrative Office: 860 545.9195

Fax

860.545.9134

PROGRAM DESCRIPTION: The Emergency Department is staffed 24 hours a day by board certified attending physicians who are always available for consultation via our physician referral line. In addition, the attending physicians provide ongoing medical command for the ground pediatric transport team. The staff of the Emergency Department is available to provide further education concerning the capabilities of the Emergency Department as well as lectures on a variety of topics in Pediatric Emergency Medicine. Several new areas within the ED have been created including a Short-Stay Observation Unit, and the Minor Trauma and Discharge Area. Additionally, electronic medical records provide easier access to patient information, and digital radiology minimizes patient moves and wait times.



Peng, John C.

Interim Director

Johns Hopkins University, 86, BA
University of Connecticut, 90, MD

Internship/Residency: University
of Connecticut, Pediatrics, 90-93

Fellowship: The Ohio State
University Hospitals College of Medicine Children's
Hospital, Pediatric Emergency Medicine, 93-95

Board Certification: Pediatrics, 94; Pediatric
Emergency Medicine, 96

Faculty Appointment: Assistant Professor, Pediatrics

Barrows, Meredith W.

University of Vermont, 94, BA
University of Connecticut, 01, MD

Internship/Residency: Maine Medical Center,
Pediatrics, 01-02; University of Connecticut, Pediatrics,
02-04

Faculty Appointment: Assistant Professor, Pediatrics

Emergency Medicine



Brancato, John C.

State University of New York at Albany, 87, BS
State University of New York Health Science Center (Syracuse), 91, MD

Internship/Residency: St. Christopher's Hospital for

Children (Philadelphia), 91-94

Fellowship: Pediatric Emergency Medicine, Boston City Hospital, 95-98

Board Certification: Pediatrics, 94, 01, 08; Pediatric Emergency Medicine, 98, 05

Faculty Appointment: Assistant Professor, Pediatrics and Emergency Medicine



Casey, Zoe

University of the West Indies (Barbados), 98, MD

Internship/Residency: Queen Elizabeth Hospital (Barbados) 98-99; Queen Elizabeth Hospital (Barbados), Senior House Officer, 00-02; University of

Connecticut, Emergency Medicine, 02-05

Fellowship: University of Connecticut, Pediatric Emergency Medicine, 05-07

Board Certification: Emergency Medicine, 06

Faculty Appointment: Assistant Professor, Pediatrics and Emergency Medicine/Traumatology



Hesse (McGowan), Katherine F.

Trinity College, 89, BS
Tufts University School of Medicine, 94, MPH
Tufts University School of Medicine, 94, MD

Internship/Residency: Brown

University, Pediatrics, 94-96; University of Washington, Pediatrics, 96-97

Fellowship: Children's Hospital Boston, Pediatric Emergency Medicine, 00-03

Faculty Appointment: Assistant Professor, Pediatrics and Emergency Medicine

Lamoureux, Christine T.

Georgetown University, 92, BS
Albany Medical College, 96, MD

Internship/Residency: University of Connecticut/ Connecticut Children's Medical Center, Pediatrics, 96-00

Board Certification: Pediatrics, 99

Faculty Appointment: Assistant Professor, Pediatrics

Emergency Medicine



Parker, James F.

Lehigh University, 94, BS
University of Medicine and
Dentistry of New Jersey, 98, MD

Internship/Residency: Medical
College of Virginia Hospitals,
Pediatrics, 98-01

Fellowship: Emory University, Pediatric Emergency
Medicine, 01-04

Board Certification: Pediatrics, 01, 08; Pediatric
Emergency Medicine - 06

Faculty Appointment: Assistant Professor, Pediatrics
and Emergency Medicine/Traumatology



Silverman, Adam M.

Tufts University, 92, BA
Boston University, 94, MA
Chicago Medical School, 98, MD

Internship/Residency: Children's
National Medical Center,
Pediatrics, 98-02

Fellowship: Children's Hospital Los Angeles, Pediatric
Emergency Medicine, 02-06; Children's Hospital Los
Angeles Pediatric Critical Care Medicine, 02-06

Board Certification: Pediatrics, 02, 08; Pediatric
Critical Care, 06

Faculty Appointment: Assistant Professor, Pediatrics



Rogers, Steven C.

Indiana University, 93, BS
New Jersey Medical School, 00, MD

Internship/Residency: Children's
Hospital Los Angeles, Pediatrics,
00-03

Fellowship: University of Utah/
Primary Children's Medical Center, 05-08

Board Certification: Pediatrics, 03

Faculty Appointment: Assistant Professor, Pediatrics



Smith, Sharon R.

Associate Director

Appalachian State University,
86, BS
Bowman Gray School of
Medicine, 91, MD

Internship/Residency: Duke
University Medical Center,
Pediatrics, 91-94

Fellowship: St. Louis Children's Hospital, Washington
University School of Medicine, Pediatric Emergency
Medicine, 94-96

Board Certification: Pediatrics, 95; Pediatric
Emergency Medicine, 00

Faculty Appointment: Associate Professor, Pediatrics

Emergency Medicine



Soltis, Michael

Philadelphia College of
Pharmacy and Science, 96, BS
University of Louisville School of
Medicine, 01, MD

Internship/Residency:
Connecticut Children's Medical
Center, Pediatrics, 01-04

Fellowship: Yale-New Haven Hospital, Pediatric
Emergency Medicine, 04-07

Board Certification: Pediatrics, 06

Faculty Appointment: Assistant Professor, Pediatrics



Welch, Kristin

Duke University, 96, BS
Washington University School of
Medicine, 01, MD

Internship/Residency: University
of Washington/Seattle Children's
Hospital, Pediatrics, 01-04

Fellowship: University of Connecticut/Connecticut
Children's Medical Center, Pediatric Emergency
Medicine, 06-09

Faculty Appointment: Assistant Professor, Pediatrics



Wiley, James F. II

Duke University, 81, BA
Duke University School of
Medicine, 85, MD
Yale University School of
Medicine, 06, MPH

Internship/Residency: Children's
Hospital of Philadelphia,

Pediatrics, 85-88

Fellowship: Children's Hospital of Philadelphia,
Pediatric Emergency Medicine, 88-90

Board Certification: Pediatrics, 92, 98; Pediatric
Toxicology, 94; Pediatric Emergency Medicine, 92, 98

Faculty Appointment: Clinical Professor, Pediatrics

PROFESSIONAL STAFF

John C. Peng, MD, FAAP, FACEP
Director
jpeng@connecticutchildrens.org

Meredith W. Barrows, MD
mbarrow@connecticutchildrens.org

John C. Brancato, MD
jbranca@connecticutchildrens.org

Zoe Casey, MD
zcasey@connecticutchildrens.org

Katherine F. Hesse (McGowan), MD, MPH, FAAP
kfmcgow@connecticutchildrens.org

Christine Lamoureux, MD
clamour@connecticutchildrens.org

James F. Parker, MD
jfparker@connecticutchildrens.org

Steven C. Rogers, MD
scrogers@connecticutchildrens.org

Adam Silverman, MD
asilver@connecticutchildrens.org

Emergency Medicine

Sharon R. Smith, MD
srsmith@connecticutchildrens.org

Michael Soltis, MD
msoltis@connecticutchildrens.org

Kristin Welch, MD
kwelch@connecticutchildrens.org

James F. Wiley, II, MD
jwiley@connecticutchildrens.org

Joshua C. Freund, PA-C
jfreund01@connecticutchildrens.org

Keri McGearry, PA-C
kmcgearry@connecticutchildrens.org

Kathleen M. O'Leary, APRN
koleary@connecticutchildrens.org

Mary L. Robbenhaar-Fretz, APRN
mrobben@connecticutchildrens.org

Meg Seitz, PA-C
mseitz@connecticutchildrens.org

Endocrinology

LOCATION

85 Seymour Street; Suite 500, Hartford, CT 06106

Satellite Locations:

Glastonbury, Torrington, Avon, Farmington, Shelton, Norwich

TELEPHONE

860.545.9370

Appointments: 860-545-9370

After hours: 860-545-9370

Fax

860.545.9376

PROGRAM DESCRIPTION: The division offers care for infants, children, and adolescents with a wide range of endocrine and metabolic disorders, including diabetes, hypoglycemia, hyperlipidemia, growth disorders, precocious and delayed puberty, pituitary, adrenal, and thyroid abnormalities, ambiguous genitalia, disorders of calcium and bone metabolism, and menstrual irregularities, including polycystic ovarian syndrome.

The division has a comprehensive program for the care and education of children with type 1 and type 2 diabetes utilizing a multidisciplinary team approach. Additionally, the endocrine division leads CT Children's Medical Center's multidisciplinary pediatric obesity program which includes medical, behavioral as well as surgical treatment of obesity and its complications. As part of the new Kid's Center for Bone Health, a state-of-the-art bone densitometer is utilized to measure bone mineral density and body composition.



Rubin, Karen R.

Division Chief, Associate Chair for Clinical Affairs, Dept. of Pediatrics

Skidmore College, 73, BA
Albert Einstein College of Medicine, 78, MD

Internship/Residency: University of Miami, Pediatrics, 79-81

Fellowship: University of Connecticut, Pediatric Endocrinology, 81-84

Board Certification: Pediatrics, 83, Pediatric Endocrinology, 86

Faculty Appointment: Professor, Pediatrics



Demirci, Cem

University of Istanbul, Medical School at Cerrahpasa, Turkey, 91, MD

Internship/Residency: Michigan State University/Hurley Medical Center, Pediatrics, 94-97

Fellowship: Children's Hospital of Pittsburgh/University of Pittsburgh Medical Center, Pediatric Endocrinology and Diabetes, 06-09

Faculty Appointment: Assistant Professor, Pediatrics

Endocrinology



Estrada, D. Elizabeth
Medical Director, Obesity Program

Cayetano Heredia Peruvian University, 85, MD

Internship/Residency: State University of New York (Brooklyn), Pediatrics, 87-90

Fellowship: State University of New York (Brooklyn), Pediatric Endocrinology, 90-91; Hospital for Sick Children (Toronto), Pediatric Endocrinology, 91-95

Board Certification: Pediatrics, 94

Faculty Appointment: Associate Professor, Pediatrics



Phulwani, Priya

Johns Hopkins University, 95, BA
George Washington University, 99, MD

Internship/Residency: University of Medicine & Dentistry of NJ Pediatrics/Medicine, 99-03

Fellowship: Connecticut Children's Medical Center, UConn School of Medicine, Combined Adult and Pediatric Endocrinology, 03-07

Board Certification: Internal Medicine, 03; Pediatrics, 03, Adult Endocrinology 07.

Faculty Appointment: Assistant Professor, Pediatrics



Ratzan, Susan K.

Skidmore College, 67, BA
Columbia University, 71, MD

Internship/Residency: St. Louis Children's Hospital, Pediatrics, 71-73

Fellowship: St. Louis Children's Hospital, Pediatric Endocrinology, 74-77

Board Certification: Pediatrics, 77; Pediatric Endocrinology, 78

Faculty Appointment: Professor, Pediatrics



Yigit, Sevket

Medical Director, Kid's Center for Bone Health

Ankara University Medical School (Ankara, Turkey), 91, MD, CCD

Internship/Residency: Ankara University Medical School, Pediatrics, 92-96 Maimonides Medical Center (Brooklyn, NY), Pediatrics, 97-00

Fellowship: University of Connecticut, Pediatric Endocrinology, 00-03

Board Certification: Pediatrics, 03, Pediatric Endocrinology 07

Faculty Appointment: Assistant Professor, Pediatrics

Endocrinology

PROFESSIONAL STAFF

Karen Rubin, MD

krubin@connecticutchildrens.org

Cem Demirci, MD

cdemirci@connecticutchildrens.org

Elizabeth Estrada, MD

eestrad@connecticutchildrens.org

Priya Phulwani, MD

pphulwa@connecticutchildrens.org

Susan Ratzan, MD

sratzan@connecticutchildrens.org

Sevket Yigit, MD

syigit@connecticutchildrens.org

Nancy Paulhus-Orkin, MSN, APRN, CDE

npaulhu@connecticutchildrens.org

Karen Bucci, MSN, APRN, CDE

kbucci@connecticutchildrens.org

Heidi Wildstein, MSN, APRN, CPNP

hwildst@connecticutchildrens.org

Jennifer Hill, MSN, APRN, CPNP

jhill01@connecticutchildrens.org

Marlene DeConti, RN

mdecont@connecticutchildrens.org

Lois Matson, RD, CDE

lmatson@connecticutchildrens.org

Julie Pederson, RD, CDE

jpeters@connecticutchildrens.org

Britt Ryan, RD

bryan@connecticutchildrens.org

Heather Miller, RD

hmiller@connecticutchildrens.org

Stacey Reicher, LCSW

sreiche@connecticutchildrens.org

Family Support/Social Work

LOCATION

Connecticut Children's Medical Center - 5C

TELEPHONE

860.545.9700

Fax

860.545.9695

PROGRAM DESCRIPTION: The Family Support Program/Social Work provides psychosocial support to patients and their families to help them manage the challenges of pediatric illness, injury, or disability. Family Support Clinicians are integrated members of the health care team with primary responsibility for assessing the psychosocial needs of children and their families. These needs are then addressed through resource advocacy, crisis intervention, and psychotherapy (individual, group and family). Family Support Clinicians assess families coping with illness, problematic behaviors, adherence issues, stress reactions, and mental health challenges in order to provide appropriate psychosocial treatment and support. Additionally, Family Support Clinicians help families and the medical providers manage crises related to child abuse and neglect. Family Support Clinicians also play a primary role with matters of bereavement (see page 14).

PROFESSIONAL STAFF

Patricia A. McIntosh, MSW, MPH
Manager

pmcinto@connecticutchildrens.org

Sarah Cabahug, MSW, CCLS
scabahug@connecticutchildrens.org

Nancy Caperino, ACSW
ncaperi@connecticutchildrens.org

Kristin Foxx, LCSW
kfoxx@connecticutchildrens.org

Patricia Hanrahan, LCSW
phanrah@connecticutchildrens.org

Mary Laliberte, LCSW
mlalibe@connecticutchildrens.org

Ebony Miller, MSW
eemiller@connecticutchildrens.org

Priscilla Pandozzi-Valentin, LCSW
ppandoz@connecticutchildrens.org

Deana Phillips-Soper, LCSW
dphilli@connecticutchildrens.org

Lisa Westerson, MSW
lwesterson@connecticutchildrens.org

Feeding Team

LOCATION

Connecticut Children's Medical Center - 5F

TELEPHONE

860.545.9889

Fax

860.545.8605

PROGRAM DESCRIPTION: The Feeding Team specializes in the assessment and treatment of children and adolescents with feeding and nutritional concerns. Members of the team include: Occupational Therapists, Speech-Language Pathologists, Clinical Nutritionists (RD's), a Behavioral Psychologist, and a Developmental Pediatrician. An interdisciplinary approach is used to address feeding problems that include extreme food selectivity or refusal, difficult mealtime behaviors, and/or specific skill deficits such as swallowing or self-feeding. In collaboration with primary care physicians and medical specialists, the team may assist with transitioning children from gastrostomy tube feeds to oral feeds. Our goal is to establish feeding patterns that optimize safety and nutrition while supporting the child's development in social, emotional, communication, and cognitive (intellectual) areas.

Examples of medical diagnoses that may be associated with feeding problems include:

- autism/pervasive developmental disorders
- bronchopulmonary dysplasia
- cerebral palsy
- cleft lip/palate
- congenital cardiac conditions
- congenital syndromes
- dysphagia
- failure to thrive
- gastro-esophageal reflux
- oral motor dysfunction
- tracheo-esophageal fistula

Following the initial team evaluation, specific consultations may be recommended from the following specialists:

- Allergist
- Gastroenterologist
- Otolaryngologist
- Pulmonologist
- Physical Therapist
- Craniofacial Team
- Lactation Consultant

A physician prescription is required in order to obtain approval for evaluation and/or treatment services and all necessary insurance referrals must be in place prior to initiating services.

PROFESSIONAL STAFF

Jeanne Kagan, MA, OTR

Clinical Manager

jkagan@connecticutchildrens.org

Virginia McGoey-Radshaw, M.Ed., CCC-SLP

Clinical Manager

vradshaw@connecticutchildrens.org

Claire Dalidowitz, MS, MA, RD, CD-N

Clinical Manager

cdalido@connecticutchildrens.org

Barbara E. Brown, M.S., M.Ed., Director

Education and Rehabilitation Services

bbrown@connecticutchildrens.org

Ann Milanese, MD

Medical Director

amilane@connecticutchildrens.org

Food Allergy Program

LOCATION

Connecticut Children's Medical Center - 2M

TELEPHONE

860.545.8514

Fax

860.545.8661

PROGRAM DESCRIPTION: The Food Allergy Clinic evaluates patients for possible food allergies and conducts blind food challenges under precautions to ascertain whether children have outgrown their allergies. Children suspected of having food allergies should be referred to a specialist to determine whether food allergies are present and if they are, to work with the patient and family to develop a management plan and see that it's followed. Nutritional and weight gain issues need to be addressed because treatment of food allergies involves restriction of certain foods.



Mendelson, Louis

Director

Vanderbilt University, 61
Medical College of Virginia, 65, MD

Internship/Residency: Bronx
Municipal Hospital Center,
Pediatrics, 65-68

Fellowship: University of California, Allergy, 70-72

Board Certification: Pediatrics, 70; Allergy and
Immunology, 74; Recertification, 81

Faculty Appointment: Clinical Professor, Pediatrics,



Factor, Jeffrey

Brown University, 81, BA
Mount Sinai School of Medicine,
85, MD

Internship/Residency: Albert
Einstein College Hospital,
Pediatrics, 85-88

Fellowship: New York Weill
Cornell Medical Center, Allergy, 89-91

Board Certification: Pediatrics, 89; Allergy, 91;
Recertification, 81

Faculty Appointment: Associate Clinical Professor,
Pediatrics

James P. Rosen, MD

State University of New York at Buffalo, 70
State University of New York, Downstate Medical
School, 74

Internship/Residency: Children's Hospital of
Philadelphia, 74-77

Fellowship: Children's Hospital of Philadelphia, 77-79

Board Certification: Pediatrics, 79; Allergy and
Immunology, 79

Faculty Appointment: Associate Clinical Professor,
Pediatrics

Marshall P. Grodofsky, MD

Queen's College of City University of New York, 76
Harvard University School of Medicine, 81

Internship/Residency: Children's Hospital of
Philadelphia, 81-84

Fellowship: Children's Hospital of Philadelphia, 84-86

Board Certification: Pediatrics, 89; Allergy and
Immunology, 89; Recertification, 99

Faculty Appointment: Assistant
Clinical Professor, Pediatrics

[Table of Contents](#)

Food Allergy Program

PROFESSIONAL STAFF

Louis M. Mendelson, MD
Co-Director

Jeffrey M. Factor, MD
Co-Director

James P. Rosen, MD

Marshall P. Grodofsky, MD

Claire Dalidowitz, MS, MA, RD, CD-N
Clinical Nutrition Services Manager
cdalido@connecticutchildrens.org

Maureen Stofira, RN
mstofir@connecticutchildrens.org

Genetics

LOCATION

UCONN Health Partners, 65 Kane St.,
West Hartford, CT 06119

Satellite Location: Norwich

TELEPHONE

860.523-6464

After Hrs/Wknds: 860.679.2000

Fax

860.523.6465

PROGRAM DESCRIPTION: The Division of Human Genetics offers genetic consultation, clinical evaluation, and counseling for a broad spectrum of genetic disorders and birth defects. These services are provided to affected children and adults, as well as to concerned family members. In addition, specific clinical programs have been established in the areas of hereditary cancer, cystic fibrosis, craniofacial disorders, Lysosomal Diseases Center (Gaucher disease, Fabry disease and MPS I), hemophilia, muscle diseases, neurogenetic disorders, phenylketonuria, Prader-Willi syndrome, and skeletal dysplasias. The Division also provides cytogenetic services including cancer cytogenetics through its laboratory located at the University of Connecticut Health Center, Farmington, Conn.



Greenstein, Robert M.

Director

New York University, 59, BA
Albert Einstein College of
Medicine, 63, MD

Internship/Residency: Albert
Einstein College of Medicine,
Pediatrics, 63-66

Fellowship: Stanford University Medical School,
Genetics, 68-69

Board Certification: Pediatrics, 68; Medical Genetics, 82

Faculty Appointment: Professor, Pediatrics; Assistant
Professor, Obstetrics & Gynecology



Rosengren, Sally S.

Brandeis University, 74, BA
University of Vermont, 79, MD

Internship/Residency: University
of Michigan Hospitals, Pediatrics,
79-81; University of Connecticut,
Pediatrics, 81-82

Fellowship: University of Connecticut, Genetics, 82-85

Board Certification: Pediatrics, 84; Medical
Genetics, 84

Faculty Appointment: Assistant Professor, Pediatrics

PROFESSIONAL STAFF

Robert M. Greenstein, MD

Director

greenstein@nso1.uhc.edu

greens@connecticutchildrens.org

Sally S. Rosengren, MD

Min Fang, MD

Genetics Labs

Peter Benn, PhD

Genetics Labs

[Table of Contents](#)

Genetics

Heather Brown, MS
Prenatal

Alicia Craffey, MS
Prenatal

Andrea Gainey, MS
Prenatal

Tom Kiely, RN, Lysosomal Diseases Center
UCONN General Clinical Research Center

Sharon Lavigne, MS
Pregnancy Exposure Information Service

Ginger Nichols, MS
Prenatal

Robin Schwartz, MS
Metabolic/Newborn Screening/Cancer

Jennifer Stroop, MS
Hereditary Cancer Program

Gynecology

LOCATION

Suite 201, 100 Retreat Avenue, Hartford, CT

Satellite Locations:
Glastonbury, Farmington

TELEPHONE

860.247.5447

After hours: 246.8568

Fax

860.728.5076

PROGRAM DESCRIPTION: A fellowship-trained pediatric and adolescent gynecologist provides comprehensive care for children and teenagers in all areas of gynecology and reproductive health. Great care is taken to provide a supportive and positive atmosphere in this very sensitive area. Common problems dealt with include vaginal infections, abnormal bleeding, pelvic pain, ovarian problems, adolescent endometriosis, congenital anomalies of the reproductive system, vulvar disorders, contraceptive issues in teenagers, evaluation of abnormal pap tests, and gynecological problems in teenagers with medical or surgical illness and in developmentally challenged individuals.



Rau, Frederick J.

Director

University of Pennsylvania,
80, BA

University of Connecticut,
84, MD

Internship/Residency: Hartford
Hospital, Obstetrics and

Gynecology, 84-88

Fellowship: University of Tennessee, Pediatric and
Adolescent Gynecology, 90-91

Board Certification: Obstetrics and Gynecology, 90

Faculty Appointment: Assistant Clinical Professor,
Obstetrics and Gynecology; Assistant Clinical
Professor, Pediatrics

PROFESSIONAL STAFF

Frederick J. Rau, MD

Director Division of Gynecology

Hand Surgery

LOCATION

Connecticut Children's Medical Center - 1A

TELEPHONE

860.545.9100

After hours: 545.9100

Fax

860.545.9095

PROGRAM DESCRIPTION: The Division of Hand Surgery provides an interdisciplinary approach to problems of the hand. Staff have particular interest, training, and expertise in the surgical and rehabilitative management of congenital anomalies and traumatic injuries. The program offers inpatient and ambulatory consultation services and incorporates physical and occupational therapies on an as-needed basis.



Ashmead, Duffield

Princeton University, 80, BA
Columbia University, 84, MD

Internship/Residency: Hartford Hospital, Surgery 84-87;
Hartford Hospital, Plastic Surgery, Hand Surgery, 87-88;
University of Massachusetts,

Plastic Surgery 88-90

Board Certification: Plastic Surgery, 94

Faculty Appointment: Assistant Clinical Professor, Surgery



Caputo, Andrew E.

Virginia Tech, 87, BS
Medical College of Virginia, 91, MD

Internship/Residency: University of Connecticut Health Center, General Surgery 91-92;
Orthopaedic Surgery, 93-97

Fellowship: Duke University Medical Center, Hand, Upper Extremity and Microsurgery, 97-98

Faculty Appointment: Assistant Clinical Professor, Surgery and Orthopaedics; Clinical Faculty, Connecticut Combined Hand Fellowship

Board Certification: Orthopaedic Surgery, 00



Babigian, Alan

Bates College, 88, BS
University of Massachusetts Medical School, 94, MD

Internship/Residency: University of Massachusetts Medical Center, Surgery 94-99;
University of Massachusetts

Medical Center, Plastic Surgery, 99-01

Fellowship: Connecticut Combined Hand Surgery, 01-02

Board Certification: Plastic Surgery, 03

Faculty Appointment: Assistant Clinical Professor, Surgery & Orthopaedics; Clinical Faculty, Connecticut Combined Hand Fellowship

Hand Surgery



Watson, H. Kirk

Bates College, 56, BS
George Washington University,
60, MD

Internship/Residency: Hartford
Hospital, Rotating, 60-61;
Hartford Hospital, Surgery,
61-62; Cornell Hospital for
Special Surgery, Orthopaedics,
62-65;

Fellowship: Joseph Boyes (California), Hand Surgery,
65-66

Board Certification: Orthopaedic Surgery, 68;
Recertification, 89

PROFESSIONAL STAFF

Duffield Ashmead, MD
Co-Director

Andrew Caputo, MD
Co-Director

Alan Babigian, MD

H. Kirk Watson, MD

Hematology/Oncology

LOCATION

Connecticut Children's Medical Center - 2J

Satellite Locations:

Glastonbury, Farmington, Shelton, Norwich

TELEPHONE

860.545.9630

After hours: 545.9630

Fax

860.545.9622

PROGRAM DESCRIPTION: The Center for Cancer and Blood Disorders is a multidisciplinary team of uniquely qualified and committed people who partner with patients and families to provide the best comprehensive care to children afflicted with cancer and blood disorders. We provide diagnosis and management services for children with all forms of cancer including leukemia, lymphoma, brain tumors, and all solid tumors, as well as hematological disorders including sickle cell disease, bleeding disorders, anemia, neutropenia, thrombocytopenia, immune disorders, and thrombotic disorders. We partner with our colleagues in other divisions including Surgery, Neurosurgery, Orthopaedics, Radiation Oncology, Radiology, Pathology and all the medical subspecialties to provide state-of-the-art comprehensive care for our patients. We strive to be leaders in effective and safe health care delivery, patient and family-centered care, and continuous improvement through research and teamwork.



Hagstrom, J. Nathan

Director and Division Head

University of Vermont, 87,
University of Vermont,
92, MD

Internship/Residency:

The Children's Hospital of
Philadelphia, General Pediatrics,
92-95

Fellowship: The Children's Hospital of Philadelphia,
Pediatric Hematology-Oncology, 95-98

Board Certification: Pediatrics, 95; Hematology/
Oncology, 98

Faculty Appointment: Associate Professor, Pediatrics



Altman, Arnold J.

Johns Hopkins University, 61, BA
Johns Hopkins University,
65, MD

Internship/Residency:

Yale-New
Haven Hospital, Pediatrics,
65-66; Children's Hospital
(Boston), Pediatrics, 68-70

Fellowship: Children's Hospital (Boston), Hematology/
Oncology, 70-72

Board Certification: Pediatrics, 71; Hematology/
Oncology, 74

Faculty Appointment: Hartford Whalers Professor of
Childhood Cancer

Hematology/Oncology



Boruchov, Donna M.

Cornell University, 91, BS
SUNY Health Science Center
at Brooklyn, 97, MD

Internship/Residency:
Montefiore Medical Center/
Jacobi Hospital, Pediatrics,
97-00

Fellowship: Memorial Sloan-Kettering Cancer Center/
New York Presbyterian Hospital-Cornell, Pediatric
Hematology/Oncology, 00-03;

Board Certification: Pediatrics, 01; Pediatric
Hematology/Oncology, 06

Faculty Appointment: Assistant Professor, Pediatrics



Gillan, Eileen R.

University of Connecticut, 76, BA
University of California, 85, MD

Internship/Residency: University
of California Medical Center,
Internal Medicine/Pediatrics,
85-89

Fellowship: University of California, Pediatric
Hematology/Oncology, 90-93

Board Certification: Pediatrics, 91; Hematology/
Oncology, 96

Faculty Appointment: Assistant Professor, Pediatrics



Isakoff, Michael S.

University of Michigan, 94, BS
New York University School of
Medicine, 99, MD

Internship/Residency: Yale-
New Haven Children's Hospital,
Pediatrics, 99-02

Fellowship: Children's Hospital Boston &
Dana-Farber Cancer Institute, Pediatric Hematology/
Oncology, 02-05

Board Certification: Pediatrics, 03, Pediatric
Hematology/Oncology, 06

Faculty Appointment: Assistant Professor, Pediatrics



Moss, Kerry M.

University of Virginia, 94, BA
Medical College of Virginia,
02, MD

Internship/Residency: University
of Connecticut, Internal
Medicine/Pediatrics, 02-06

Fellowship: University of Colorado/The Children's
Hospital, Pediatric Hematology/Oncology and Bone
Marrow Transplantation, 06-09

Board Certification: Pediatrics, 08

Faculty Appointment: Assistant Clinical Professor,
Pediatrics

Hematology/Oncology



Orsey, Andrea D.

McGill University, 96, BS
University of Connecticut, 01, MD
University of Pennsylvania,
07 MSCE

Internship/Residency: Children's
Hospital of Philadelphia,
Pediatrics, 01-04

Fellowship: Children's Hospital of Philadelphia,
Pediatric Hematology/Oncology, 04-07

Board Certification: Pediatrics, 04, Pediatric
Hematology-Oncology, 08

Faculty Appointment: Assistant Professor, Pediatrics



Parikh, Nehal S.

Rutgers University, 93, BA
Ross University School of
Medicine, 94-98, MD

Internship/Residency: State
University of New York,
Pediatrics, 98-01

Fellowship: Cincinnati Children's Hospital Medical
Center, Pediatric Hematology/Oncology, 01-04

Board Certification: Pediatrics, 01; Hematology/
Oncology, 04

Faculty Appointment: Assistant Professor, Pediatrics

PROFESSIONAL STAFF

J. Nathan Hagstrom, MD
Director and Division Head
nhagstr@connecticutchildrens.org

Arnold J. Altman, MD
aaltman@connecticutchildrens.org

Donna M. Boruchov, MD
dboruchov@connecticutchildrens.org

Eileen R. Gillan, MD
egillan@connecticutchildrens.org

Michael S. Isakoff, MD
misakoff@connecticutchildrens.org

Kerry M. Moss, MD
kmoss@connecticutchildrens.org

Andrea D. Orsey, MD
aorsey@connecticutchildrens.org

Nehal S. Parikh, MD
nparikh@connecticutchildrens.org

Emily Peluso, APRN

Katherine Steven, APRN

Amanda Zuse, APRN

Sarah Matney, RN
Nursing Manager
smatney@connecticutchildrens.org

Sally Derench
Practice Manager

Mary Conway, RN
Nurse Specialist and Educator
mxconway@connecticutchildrens.org

Jeanne Walczak, RN
jwalczak@connecticutchildrens.org

Barbara Cohen, RN
bcohen@connecticutchildrens.org

Michele Garger, RN

Melissa F Goddard, RN

Leigh Hart, RN

Courtney King, RN
cking@connecticutchildrens.org

Mary-Fran McGeary, RN

Heather Rea, RN

Sarah Steven, RN

Mary Laliberte, MSW
mlalibe@connecticutchildrens.org

Infectious Diseases

LOCATION

Connecticut Children's Medical Center - 2L

TELEPHONE

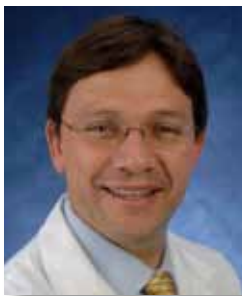
860.545.9490

After hours: 545.9490

Fax

860.545.9371

PROGRAM DESCRIPTION: The Division of Pediatric Infectious Diseases provides consultation and care for ambulatory and hospitalized patients with a wide variety of infectious diseases. Particular areas of interest include Lyme disease, babesiosis, ehrlichiosis, herpes infections, chronic fatigue syndrome, recurrent infections, and fevers of unknown origin.



Salazar, Juan
Director

University of Minnesota, MPH
Universidad Javeriana, Colombia,
86, MD

Internship/Residency: University
of Connecticut, Pediatrics, 88-92

Fellowship: University of Minnesota, Pediatric
Infectious Diseases, 92-95

Board Certification: Pediatrics, 92; Pediatric Infectious
Diseases, 97

Faculty Appointment: Assistant Professor, Pediatrics



Cohen-Abbo, Alberto

Luis Razetti Medical School
(Venezuela), 84, MD

Internship/Residency: Children's
Medical Center (Dallas),
Pediatrics, 86-89

Fellowship: Children's Hospital,
Vanderbilt University, Pediatric Infectious Diseases,
89-92

Board Certification: Pediatrics, 90; Infectious
Diseases, 94

Faculty Appointment: Assistant Professor, Pediatrics



Feder, Henry M, Jr.

University of Pennsylvania,
67, BA
Jefferson Medical College,
71, MD

Internship/Residency: Hartford
Hospital, Medicine, 71-72;
Columbus Children's Hospital,
72-73

Fellowship: The Johns Hopkins Hospital, Pediatric
Infectious Diseases, 75-77

Board Certification: Pediatrics, 76, Recertification,
84; Family Practice, 78, Recertification, 90; Pediatric
Infectious Disease, 94

Faculty Appointment: Professor, Pediatrics; Professor,
Family Medicine

Infectious Diseases



Held, R. Melissa

Cornell University, 95, BS
Cornell University Medical
College, 99, MD

Internship/Residency: Yale-New
Haven Hospital, Pediatrics, 99-
02

Fellowship: Yale University School of Medicine,
Infectious Diseases, 02-05

Faculty Appointment: Assistant Professor, Pediatrics

PROFESSIONAL STAFF

Juan Salazar, MD, MPH
Director
jsalaza@connecticutchildrens.org

Alberto Cohen-Abbo, MD
acohen@connecticutchildrens.org

Henry M. Feder, Jr., MD
hfeder@connecticutchildrens.org

Melissa Held, MD
mheld@connecticutchildrens.org

Injury Prevention Center

LOCATION

Floors 6, 7 & 8

TELEPHONE

Injury Prevention Center: 860.545.9988

Connecticut SAFE KIDS: 860.545.9977

Violence Prevention Program: 860.545.9984

Injury Free Coalition for Kids: 860.545.9985

Fax

860.545.8809

PROGRAM DESCRIPTION: The Injury Prevention Center is a statewide program which is dedicated to the reduction of unintentional injury and violence among children through research, education and training, community-based programs, and legislation/advocacy. Center staff are available to support local efforts as well as those initiated by health care providers and agencies. A full range of materials and references are available for patients, parents, health care providers and community organizations.

PROFESSIONAL STAFF

Garry Lapidus, PA-C, MPH

Director

glapidu@connecticutchildrens.org

Kevin Borrup, JD

Director, Violence Prevention Program

kborrup@connecticutchildrens.org

Erica Gelven, PhD

Research Associate

egelven@connecticutchildrens.org

Karen Brock, MPH

Director, Connecticut SAFE KIDS

kbrock@connecticutchildrens.org

Laura Morris, MPH

Program Coordinator

lmorris@connecticutchildrens.org

Nicole Peretto

Research Assistant

nperetto@connecticutchildrens.org

Inpatient Management Team

LOCATION

282 Washington Street, Hartford
Floors 6, 7 & 8

56 Franklin Street, Waterbury
Sacred Heart 4, within Saint Mary's Hospital

TELEPHONE

*Transport line: 860.545.8989
(through the Emergency Dept.)*

*Referral line: 860.545.9205
(through the Emergency Dept.)*

*IMT Physician pager: 860.220.4168
(for inpatient referrals)*

Admitting resident pager: 860.220.4160

*Sixth floor unit: 860.545.8730
Fax: 860.545.8738*

*Seventh floor unit: 860.545.8760
Fax: 860.545.8769*

*Eighth floor unit: 860.545.8800
Fax: 860.545.8809*

PROGRAM DESCRIPTION: The 97-bed inpatient service at Connecticut Children's is a general medical and surgical service, capable of supporting step-down level acuity with flexible nurse to patient ratios and sophisticated cardio-respiratory monitoring. The 85-inpatient beds at the Hartford campus are located on floors 6, 7, and 8 and are supported by a broad range of pediatric subspecialties as well as by services such as Child Life and the Family Support Program. Our new 12 bed satellite unit, Connecticut Children's - Waterbury, is located on Sacred Heart 4 within St. Mary's Hospital in Waterbury and is staffed by physicians and nurses from our own Inpatient Management Team.

All of the inpatient units at the Hartford campus are staffed 24/7 by on-site physicians in residency training with close

oversight by attending faculty as well as nurses specially trained in pediatric care. Each room is a single with its own shower/bath, providing the parent rooming-in capability. Care is provided for a full range of medical conditions including general medical problems, general surgery, orthopedic surgery, asthma, diabetes and more. The eighth floor at the Hartford campus provides specialized care for our hematology/oncology service, as well as for general pediatric inpatients.

The Inpatient Management Team is available to admit and provide care to general pediatric patients whose community pediatricians do not admit to Connecticut Children's Medical Center. In addition, these faculty members provide consultative services for complex patients on both the medical and surgical services when needed.



Sekaran, Anand

Division Head and Director

University of California, Berkeley, 89, BA
Tufts University School of Medicine, 94, MD

Internship/Residency: Albert Einstein Medical Center, 94-95,

Transitional; Massachusetts General Hospital, 95-96, Radiology; Children's Hospital Oakland, 96-99, Pediatrics

Board Certification: Pediatrics, 99

Faculty Appointment: Assistant Professor, Pediatrics

Inpatient Management Team



Held, R. Melissa

Cornell University, 95, BS
Cornell University Medical
College, 99, MD

Internship/Residency: Yale-New
Haven Hospital, Pediatrics, 99-
02

Fellowship: Yale University School of Medicine,
Infectious Diseases, 02-05

Faculty Appointment: Assistant Professor, Pediatrics



Johnson, Richard

College of the Holy Cross,
74, BA
Case Western Reserve University
School of Medicine, 78, MD

Internship/Residency: Yale-New
Haven Hospital, Pediatrics,
78-81

Board Certification: Pediatrics, 83

Faculty Appointment: Clinical Associate Professor,
Pediatrics



Marcello, E. David, III

Harvard College, 81, BA
Boston University School of
Medicine, 89, MD

Internship/Residency: Medical
College of Virginia, Pediatrics,
89-93

Board Certification: Pediatrics, 93, Recertification, 00

Faculty Appointment: Assistant Professor, Pediatrics;
Clinical Adjunct Assistant Professor, Quinnipiac
University School of Health Sciences



McDermott, Christopher J.

Hamilton College, 87, BA
Albany Medical College, 97, MD

Internship/Residency: Albany
Medical Center Hospital,
Pediatrics, 97-01 (Chief Resident
00-01)

Fellowship: Children's Hospital Medical Center,
Cincinnati Cardiology, 01-02

Board Certification: Pediatrics, 01

Faculty Appointment: Assistant Professor, Pediatrics



Skurkis, Christine M.

Rutgers University, 98, BA
University of Connecticut School
of Medicine, 03, MD

Internship/Residency: University
of Connecticut, Connecticut
Children's Medical Center,
Pediatrics, 03-07 (Chief Resident
06-07)

Board Certification: Pediatrics, 06

Faculty Appointment: Assistant Professor, Pediatrics

Sullivan, Catherine M.

Brown University, 86, BS
Brown University School of Medicine, 89, MD

Internship/Residency: Georgetown University
Hospital, Pediatrics, 89-91; The Children's Hospital of
Philadelphia, Pediatrics, 92-93

Fellowship: The Children's Hospital of Philadelphia,
Pediatric Nutrition, 91-92

Board Certification: Pediatrics, 94; Re-Cert, 02

Faculty Appointment: Assistant Professor, Pediatrics

Inpatient Management Team



Zempsky, William T.

Cornell University, 84, BA
Johns Hopkins University,
88, MD

Internship/Residency: Johns
Hopkins Hospital, Pediatrics,
88-91

Fellowship: Mott Children's Hospital (Michigan),
Cardiology, 91-92; Children's Hospital of Pittsburgh,
Pediatric Emergency Medicine, 93-95

Board Certification: Pediatrics, 92; Pediatric
Emergency Medicine, 96

Faculty Appointment: Associate Professor, Pediatrics

PROFESSIONAL STAFF

Anand Sekaran, MD
Division Head and Director
asekaran@connecticutchildrens.org

Melissa Held, MD
mheld@connecticutchildrens.org

Richard Johnson, MD
rijohns@connecticutchildrens.org

David Marcello, MD
dmarcel@connecticutchildrens.org

Christopher McDermott, MD
cmcdermott@connecticutchildrens.org

Christine Skurkis, MD
cskurki@connecticutchildrens.org

Catherine Sullivan, MD
cbsulli@connecticutchildrens.org

William Zempsky, MD
wzempsk@connecticutchildrens.org

Lead Prevention Program

LOCATION

111 Founders Plaza, East Hartford, CT 06108

TELEPHONE

860.610.4241

Fax

860.610.4243

PROGRAM DESCRIPTION: The Connecticut Children's Medical Center LAMPP (Lead Action for Medicaid Primary Prevention) project is a HUD financed early intervention and prevention program that provides funding to private property owners in 14 cities and towns in Connecticut to make homes and apartments lead safe. The goal is to protect children before they get lead poisoned, intervene at lower blood lead levels, and prevent exposure to children who will move into the same housing in the future. Although we give priority to properties with children under age six, rental properties are eligible with or without children in residence. Occupants of the housing units must have low-incomes. LAMPP operates in the following communities: Bridgeport, Danbury, East Haven, Enfield, Hartford, Manchester, Meriden, New Britain, New Haven, Norwalk, Stamford, Torrington, Waterbury and West Haven.

PROFESSIONAL STAFF

Ronald Kraatz
Project Director
rkraatz@connecticutchildrens.org

Chris Corcoran
Project Coordinator
ccorcoran@connecticutchildrens.org

Amy McLean Salls
Project Coordinator
asalls@connecticutchildrens.org

Dick Dimock
Project Construction Manager
ddimock@connecticutchildrens.org

Alicia Ignatowicz
Compliance Officer
aignatowicz@connecticutchildrens.org

Luis Alvarado
lalvarado@connecticutchildrens.org

Esther Figueroa
efigueroa@connecticutchildrens.org

Medical Education

LOCATION

Connecticut Children's Medical Center - 4H

TELEPHONE

860.545.9970

Fax

860.545.9159

PROGRAM DESCRIPTION: The Office for Medical Education facilitates all professional education activities at the medical student, resident and fellow levels, as well as continuing education programs for Connecticut Children's Medical Center staff and the regional pediatric community. A wide range of professional conferences and courses are held annually, including the Pediatric Grand Rounds series and two Evening Lecture Series in Pediatrics and Mental Health respectively. Information on conferences, educational events and activities is coordinated through the center.



Zalneraitis, Edwin L.

Director

College of the Holy Cross,
70, BA
Brown University, 75, MD

Internship/Residency: Children's Hospital (Boston), Pediatrics, 75-77; Massachusetts General Hospital, Neurology, 77-80

Fellowship: Massachusetts General Hospital, Neurology, 80-81

Board Certification: Pediatrics, 79; Psychiatry & Neurology, 81

Faculty Appointment: Professor, Pediatrics; Professor, Neurology



Spiegelman, Kenneth N.

Medical Director, Continuing Medical Education

University of Massachusetts,
74, BS
Mount Sinai School of Medicine,
78, MD

Internship/Residency: Children's Hospital of Pittsburgh, Pediatrics, 78-81

Fellowship: University of Massachusetts, Developmental Pediatrics, 81-82

Board Certification: Pediatrics, 83



Algranati, Paula S.

University of Rochester, 72, BA
Michigan State University, 76, MD

Internship/Residency: Boston Floating Hospital, Tufts NEMCH, 76-79 Pediatrics

Board Certification: Pediatrics, 81, Recertification, 95; Pediatric Endocrinology, 86

Faculty Appointment: Professor, Pediatrics



Susan Duckworth

Director Academic Administration Continuing Medical Education

sduckwo@connecticutchildrens.org
860.610.4263

Medical Education

PROFESSIONAL STAFF

Edwin L. Zalneraitis, MD

Director

ezalneraitis@connecticutchildrens.org

Kenneth Spiegleman, MD

Medical Director, Continuing Medical Education

kspiege@connecticutchildrens.org

Paula Algranati, MD,

Director, Undergraduate Education

algranati@nso2.uchc.edu

Susan Duckworth

Manager, Postgraduate Medical Education

sduckw@connecticutchildrens.org

Aida Velez

Coordinator, Office of Medical Education

avelez@connecticutchildrens.org

Neonatology

LOCATION

Hartford Hospital - N5

TELEPHONE

860.545.8950

After hours: 860.545.9720 (NICU)

Fax

860.860.545.8945

PROGRAM DESCRIPTION: The Neonatology division provides Level III medical and surgical services for the northern Connecticut region. Each year, approximately 550 infants are admitted either inborn or transferred from area hospitals. The Connecticut Children's NICU is located adjacent to the Hartford Hospital delivery suite. The 32 bed NICU is owned, staffed and managed by Connecticut Children's Medical Center. A family centered team approach includes individualized developmental care, family support services, nutrition and lactation, and child life services. Neurodevelopmental follow-up is available for high risk infants during the first two years following discharge. The NICU maximizes quality care and patient safety through performance improvement activities keyed to internal and external benchmarks.



Herson, Victor C.

Director

Colgate University, 69, BA
University of Vermont, 73, MD

Internship/Residency: University of Colorado Medical Center, Pediatrics, 73-76

Fellowship: University of Connecticut, Neonatology-Perinatology, 79-81

Board Certification: Pediatrics, 79; Neonatal-Perinatal Medicine, 81

Faculty Appointment: Professor, Pediatrics



Eisenfeld, Leonard I.

Washington and Jefferson College, 67, BA
Yale University, 71, MD

Internship/Residency: Children's Hospital of Pittsburgh, Pediatric internship, 71-72; Children's Hospital of Pittsburgh, Pediatrics, 72-74

Fellowship: University of Alabama, Neonatology-Perinatology, 74-76

Board Certification: Pediatrics, 76, Recert., 86; Neonatal-Perinatal Medicine, 81, Recertification, 86

Faculty Appointment: Associate Professor, Pediatrics, Adjunct Professor of Biomedical Engineering, UCONN Graduate School of Biomedical Engineering.



Hagadorn, I. James

University of North Carolina at Chapel Hill, 81, BA
University of North Carolina at Chapel Hill, 85, MD
Tufts University Sackler Graduate School of Biomedical Sciences, 04, MS

Internship/Residency: University of Virginia Hospitals, Pediatrics, 85-88

Fellowship: Stanford University Medical Center, Neonatal-Perinatal Medicine, 88-91

Board Certification: Pediatrics, 89, Recertified, 96, 05; Neonatal-Perinatal Medicine, 91, Recertification, 97, 05

Faculty Appointment: Assistant Professor, Pediatrics

Neonatology



Lainwala, Shabnam

Bombay University, India, 89, MD
Clark University, PhD

Internship/Residency:
Maimonides Medical Center,
Pediatrics, 96-99

Fellowship: New England
Medical Center, Tufts University, Neonatal-Perinatal
Medicine, 99-02

Board Certification: Pediatrics, 99; Neonatal-Perinatal
Medicine, 03

Faculty Appointment: Assistant Professor, Pediatrics



Matson, Adam P.

University of Connecticut, 94, BS
Tufts University School of
Medicine, 98, MD

Internship/Residency: Baystate
Medical Center, Pediatrics, 98-01

Fellowship: University of
Connecticut, Neonatology, 01-04

Board Certification: Pediatrics, 01, Recertified 08;
Neonatal-Perinatal Medicine, 06

Faculty Appointment: Assistant Professor, Pediatrics



Sanders, Marilyn R.

University of Kansas, 80, BA
University of Kansas School of
Medicine, 84, MD

Internship/Residency: University
of Connecticut, Pediatrics, 84-87

Fellowship: Johns Hopkins
Hospital,
Neonatal-Perinatal Medicine, 87-89; University of
Connecticut, Neonatal-Perinatal Medicine, 89-90;

Board Certification: Pediatrics, 89; Recertification, 98,
06; Neonatal-Perinatal Medicine, 91, Recertification,
97, 05

Faculty Appointment: Professor, Pediatrics

Sarkar, Shikha

Jai Hind College, Mumbai, India Lokmanya Tilak
Municipal Medical College and LTMM Hospital,
University of Bombay, 92, MD

Internship/Residency: Lokmanya Tilak Municipal
Medical College and L.T.M.M. Hospital, 91-92; B.J.
Wadia Hospital for Children and Allied Hospitals,
Pediatrics, 92-95; University of Connecticut, Pediatrics,
99-02

Fellowship: University of Connecticut,
Neonatal-Perinatal Medicine, 99-02

Board Certification: Pediatrics, 97; Neonatal-Perinatal
Medicine, 06

Faculty Appointment: Assistant Professor, Pediatrics

Neonatology



Wolkoff, Leslie, I.

Union College, 85, BS
SUNY Health Science Center
at Brooklyn, Downstate Medical
Center, 89, MD

Internship/Residency: Schneider
Children's Hospital, Long Island
Jewish Hillside Medical Center,
Pediatrics, 89-92

Fellowship: The Floating Hospital for Infants
and Children, Tufts New England Medical Center,
Neonatology, 92-95

Board Certification: Pediatrics, 88, Recertification,
00 & 007; Neonatal-Perinatal Medicine, 95,
Recertification, 02

Faculty Appointment: Assistant Professor, Pediatrics

PROFESSIONAL STAFF

Victor C. Herson, MD
Medical Director
vherson@connecticutchildrens.org

Leonard Eisenfeld, MD
leisenf@connecticutchildrens.org

James Hagadorn, MD, MS
jhagadorn@connecticutchildrens.org

Shabnam Lainwala, MD, PhD
slainwala@connecticutchildrens.org

Kathleen Marinelli, MD
kmarine@connecticutchildrens.org

Adam Matson, MD
amatson@connecticutchildrens.org

Marilyn R. Sanders, MD
msander@connecticutchildrens.org

Shikha Sarkar, MD, FAAP
ssarkar@connecticutchildrens.org

Leslie Wolkoff, MD
lwolkof@connecticutchildrens.org

Marla Booker, MS, Manager
mbooker@connecticutchildrens.org

Jean Bender, APRN
jbender@connecticutchildrens.org

Angela Boisseau, APRN
aboisseau@connecticutchildrens.org

Mary Brennan-Centrella, APRN
mbernna@connecticutchildrens.org

Jill Herr, APRN
jherr@connecticutchildrens.org

Jill Lageman, PA-C
jlagema@connecticutchildrens.org

Michelle Letendre, APRN
mletend@connecticutchildrens.org

Stephanie McGuire, APRN, IBCLC
smcguir@connecticutchildrens.org

Suanne Menick, APRN
smenick@connecticutchildrens.org

Karen O'Brien, APRN
kobrien@connecticutchildrens.org

Terry Poppiti, APRN
tpoppit@connecticutchildrens.org

Jessica Simao, PA-C
jsimao@connecticutchildrens.org

Trish Trehey, APRN
ttrehey@connecticutchildrens.org

Alyssa Weiss, APRN
aweiss@connecticutchildrens.org

Nephrology

LOCATION

Connecticut Children's Medical Center - 2L
Satellite Location: Shelton

TELEPHONE

860.545.9970
After hours: 860.545.9395

Fax

860.545.9159

PROFESSIONAL STAFF

Kathleen Sardegna, MD
ksardeg@connecticutchildrens.org

Annie Blais MA
ablais@connecticutchildrens.org

Janet Martin MR
jmarti@connecticutchildrens.org

Laura Deane RN
ldeane@connecticutchildrens.org

PROGRAM DESCRIPTION: The Division provides primary and consultative services to patients with a variety of renal and urinary tract disorders, including hematuria, proteinuria, nephrotic syndrome, nephritic syndrome, recurrent urinary tract infections, congenital renal anomalies including hydronephrosis and cystic diseases of the kidneys, kidney stones, systemic hypertension, fluid and electrolyte disorders, and renal failure. It provides acute and chronic peritoneal and hemodialysis, and plasmapheresis, and delivers the entire medical care to the renal transplant recipients before and after renal transplantation



Sardegna, Kathleen M.

University of Pennsylvania,
84, BA
George Washington University,
88, MD

Internship/Residency: Children's
National Medical Center,
Pediatrics, 88-91

Fellowship: Cincinnati Children's Hospital, Pediatric
Nephrology, 94-97

Board Certification: Pediatrics, 2002, Pediatric
Nephrology 2006

Faculty Appointment: Assistant Professor, Pediatrics

Neurology

LOCATION

Connecticut Children's Medical Center - 2A
Satellite Location: Glastonbury

TELEPHONE

860.545.9487

EEG: 860.545.9470

After hours: 860.545.9460

Fax

860.545.9484

PROGRAM DESCRIPTION: The Division of Pediatric Neurology offers a wide range of consultative and therapeutic services by appointment, with daily accommodation for urgent evaluations. Specialty programs include expert services in the treatment and evaluation of epilepsy, neuro-muscular diseases, spasticity and cerebral palsy, neurogenetic/neurocutaneous diseases, autism spectrum disorders and headaches. Special laboratory services include EEG and long term EEG Telemetry, evoked potentials (brainstem, visual). Ketogenic Diet.

Neurogenetics Clinic

(Neurofibromatosis, tuberous sclerosis, neurocutaneous disorders)

860.545.9580



DiMario, Francis J.

University of Massachusetts,
76, BA
Tufts University, 81, MD

Internship/Residency: Medical Center Hospital of Vermont, Pediatrics, 81-84; Hospitals of the University of Pennsylvania,

Neurology, 85-86

Fellowship: Children's Hospital of Philadelphia, Pediatric Neurology, 86-88

Board Certification: Pediatrics, 86; Psychiatry & Neurology/Child Neurology, 89

Faculty Appointment: Professor, Pediatrics; Professor, Neurology; Assistant Professor, Diagnostic Imaging & Therapeutics



Maden Cohen, Jennifer E.

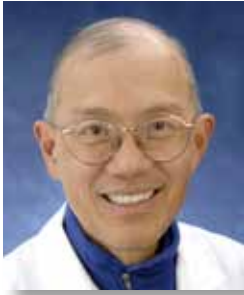
Tufts University, 98, BA
Robert Wood Johnson Medical School, 02, MD

Internship/Residency: Robert Wood Johnson Medical School, Pediatrics, 02-04

Fellowship: Albert Einstein College of Medicine, Pediatric Neurology, 04-07; Clinical Neurophysiology-EEG/Epilepsy, 07-08

Faculty Appointment: Assistant Professor, Pediatrics

Neurology



Young, Richard S.K.

Stanford University, 69, BA
Yale University, 73, MD, MPH

Internship/Residency: University of Washington Affiliated Hospitals, Pediatrics, 73-74; Massachusetts General Hospital, Pediatrics, 76-77

Fellowship: Massachusetts General Hospital, Neurology, 77-80

Board Certification: Pediatrics, 81; Neurology, 83

Faculty Appointment: Assistant Clinical Professor, Pediatrics



Zalneraitis, Edwin L.

College of the Holy Cross,
70, BA
Brown University, 75, MD

Internship/Residency: Children's Hospital (Boston), Pediatrics, 75-77; Massachusetts General Hospital, Neurology, 77-80

Fellowship: Massachusetts General Hospital, Neurology, 80-81

Board Certification: Pediatrics, 79; Psychiatry & Neurology, 81

Faculty Appointment: Professor, Pediatrics; Professor, Neurology

PROFESSIONAL STAFF

Francis J. DiMario, MD
fdimari@connecticutchildrens.org

Jennifer Maden Cohen, MD
jcohen01@connecticutchildrens.org

Richard S.K. Young, MD, MPH
ryoung01@connecticutchildrens.org

Ed Zalneraitis, MD
ezalner@connecticutchildrens.org

Ellen Fitzgibbons, RN
efitzgi@connecticutchildrens.org

Debbie Johnson, RN
djohnso@connecticutchildrens.org

Jamie Cubanski, RN
jcubans@connecticutchildrens.org

Neurosurgery

LOCATION

Connecticut Children's Medical Center - 1E
Satellite Location: Shriners Hospital, MA

TELEPHONE

860.545.8373

After hours: 860.545.8373

Fax

860.545.8233

PROGRAM DESCRIPTION: The Department of Neurosurgery provides the full spectrum of pediatric neurosurgical services including the treatment of trauma, hydrocephalus, brain and spinal cord tumors and vascular malformations, and congenital cranial and spinal disorders. Neurosurgical participation in multidisciplinary teams encompasses the areas of neurooncology, craniofacial disorders, neuro-trauma, spina bifida and spasticity.

State of the art surgical services including neuro-endoscopy, intra-operative electrophysiologic monitoring and computer assisted neuronavigation are available. The Department of Neurosurgery utilizes the CereTom intraoperative CT scanner, which is unique in the state of Connecticut. Additional services include the state's only program for spasticity management via the implant of intrathecal baclofen pumps. The department also is involved in a new multidisciplinary program in epilepsy surgery.



Kanev, Paul M.,
Director

Dickinson College, 75, BS
Washington University, 77, MS
Temple University Medical School, 81, MD

Internship/Residency: University of Virginia, 81-82, Surgery; 82-83, Neurosurgery; New England Medical Center, Pediatrics, 83-85; University of Washington, 85-89, Neurosurgery

Fellowship: Children's Hospital and Medical Center, 89-90, Pediatric Neurosurgery

Board Certification: Pediatrics, 90; Neurosurgery, 93; Pediatric Neurosurgery, 97, Recert, 08

Faculty Appointment: Clinical Professor, Neurosurgery



Martin, Jonathan

Bowdoin College, 92, BA
University of Vermont College of Medicine, 97, MD

Internship/Residency: Walter Reed Army Medical Center, 97-98, General Surgery; Oregon Health Sciences University, 98-99, Neurosurgery; Walter Reed Army Medical Center, 000-03, Neurosurgery

Fellowship: Children's National Medical Center, 03-04, Pediatric Neurosurgery

Board Certification: Neurosurgery, 07

Faculty Appointment: Assistant Professor, Surgery-Neurosurgery

Neurosurgery

PROFESSIONAL STAFF

Paul M. Kanev, MD, MS, Director
pkanev@connecticutchildrens.org

Jonathan Martin, MD
jmartin03@connecticutchildrens.org

Occupational Therapy Department

LOCATION

Connecticut Children's Medical Center -5F

*Satellite Locations:
Farmington, Glastonbury*

*Aquatic Therapy:
Avon Wellness Center,
100 Simsbury Road, Avon, CT 06001*

*Glastonbury Wellness Center,
628 Hebron Ave., Glastonbury, CT 06033*

TELEPHONE

860.545.8600

Fax

860.545.8605

PROGRAM DESCRIPTION: The Occupational Therapy Department offers comprehensive evaluation, consultation and intervention services to children from birth through eighteen years of age. Together with families, health care teams and community resources, program staff work to maximize the functional potential and level of independence of children of all ages and abilities.

Outpatient occupational therapists provide age-based and diagnosis specific assessment and intervention for children with sub-acute or chronic illness/ disability. Typically referred diagnoses include but are not limited to: cerebral palsy, sensory integrative dysfunction, autism spectrum disorders, myelomeningocele, muscle disease, juvenile rheumatoid arthritis, orthopedic injuries, pain, fine motor deficits and brachial plexus palsies. Clinical interventions emphasize recovery, health and fitness aimed at maximizing children's abilities to function within their daily environment. Areas of specialization include neurodevelopmental treatment, sensory integration, pain management, adaptive equipment, assistive technology, splinting, sensory/behavioral difficulties, feeding difficulties, aquatic therapy and therapeutic listening. Outpatient services are provided at the Connecticut Children's Medical Center in Hartford, and at our satellite offices in Farmington and Glastonbury. Aquatic

therapy services are also available at the Avon and Glastonbury (Healthtrax) Wellness Centers. In addition to the above services, the occupational therapists are integral members of Connecticut Children's Medical Center multidisciplinary ambulatory clinics and the Feeding Team.

Inpatient Occupational Therapy addresses the acute therapeutic needs of children and their families on medical-surgical floors and the neonatal and intensive care units. As members of the acute inpatient pediatric rehabilitation program, occupational therapists assist children who have had brain or spinal cord injuries or who have complex medical conditions to regain the requisite functional skills necessary to re-enter their home and school communities.

PROFESSIONAL STAFF

Jeanne Kagan, MA
OTR, Manager
jkagan@connecticutchildrens.org

Barbara E. Brown, MS, MEd.
Director
bbrown@connecticutchildrens.org

Ann Milanese, MD
Medical Director
amilane@connecticutchildrens.org

Paula Dorschied, OTR
Assistant Manager Occupational Therapy
pdorsch@connecticutchildrens.org

Allison Solecki, OTR
Assistant Manger, Occupational Therapy
asolecki@connecticutchildrens.org

Amy Alexander, OT

Diane Archambault, OT

Mary Beth Collins, OT

Jill Cotter, MS, OT

Melissa Dominick, OT

Robin Galeota, OT

[Table of Contents](#)

Occupational Therapy Department

Joshua Goodman, OT

Bethany Heller, OT

Andrea Jason,MS, OT

Jennifer Jarvis, OT

Michelle Kidwell, OT

Debbie Lin, MS, OT

Christine Lucas, MS, OT

Tara Manguilli, MEd, OT

Sandra Rodrigue, MS, OT

Allison Solecki, OT

Susan Wright, OT

Ophthalmology

LOCATION

Farmington office

366 Colt Highway/Route 6, Farmington, CT 06032

Glastonbury Professional Center,

131 New London Turnpike, Glastonbury, CT 06033

TELEPHONE

860.409.0449

After hours: 860.409.0449

Fax

860.409.0551

PROGRAM DESCRIPTION: This full pediatric ophthalmology program provides: 24-hour Emergency Department coverage; complete consultative inpatient services; day surgery for strabismus, cataract, glaucoma, blocked tear ducts, chalazia, and ptosis and orthoptic evaluation and treatment of eye muscle disorders.



Mitchell, Paul R.

Director

University of Massachusetts,
66, BS
George Washington University,
70, MD

Internship/Residency:

Dartmouth Medical School,

Surgery, 70-71; Wills Eye Hospital, Ophthalmology,
73-76

Fellowship: Children's National Medical Center,
Pediatric Ophthalmology, 76-77

Board Certification: Ophthalmology, 77

Faculty Appointment: Assistant Clinical Professor,
Surgery



Kelly, Christopher J.

College of the Holy Cross, 87, BA
Harvard Medical School, 94, MD

Internship/Residency: New
England Deaconess Hospital,
Internal Medicine, 94-95; Wills
Eye Hospital, Philadelphia,
Ophthalmology, 95-98;

Fellowship: Duke University Eye Center, Pediatric
Ophthalmology, 98-99

Board Certification: Ophthalmology, 99

Faculty Appointment: Assistant Clinical Professor,
Surgery



Walden, Peter G.

Tufts University, 75, BS
University of Connecticut,
79, MD

Internship/Residency: St.
Francis Hospital, Flexible, 79-
80; University of Pittsburgh,
Ophthalmology, 80-83

Fellowship: University of Pittsburgh, Pediatric
Ophthalmology, 83-84

Board Certification: Ophthalmology, 85

Faculty Appointment: Assistant Clinical Professor,
Surgery; Assistant Clinical Professor, Pediatrics

PROFESSIONAL STAFF

Paul R. Mitchell, MD

Director

Christopher J. Kelly, MD

Peter G. Walden, MD

Oral & Maxillofacial Surgery

LOCATION

Connecticut Children's Medical Center - 1C

TELEPHONE

860.545.9030

Fax

860.545. 8001

PROGRAM DESCRIPTION: The Division is staffed by 17 oral and maxillofacial surgeons. A full range of oral and maxillofacial surgical services is provided. Examples include the treatment of odontogenic infections and neoplasms, cleft lip and palate disorders (in conjunction with the Cleft Palate/Craniofacial team), traumatic injuries, developmental skeletal anomalies, temporomandibular disorders, oral mucosal diseases, salivary gland diseases, and the management of patients with associated medical conditions. The Division also provides full ambulatory anesthesia services for the Department of Dentistry.



Shafer, David M.

Director

University of Pennsylvania,
81, BA
Harvard University, 86, DMD

Internship/Residency: Long
Island Jewish Medical Center,
Oral and Maxillofacial Surgery,
86-90

Board Certification: Oral and Maxillofacial Surgery, 92

Faculty Appointment: Associate Professor, Dentistry

PROFESSIONAL STAFF

David Shafer, DMD, Director

Michael Goupil, DDS, MEd

Orthopaedics

LOCATION

Connecticut Children's Medical Center - 1A

Center for Motion Analysis: Farmington

Satellite Locations: Farmington, Glastonbury, Norwich, Shelton

TELEPHONE 860.545.9100

Fax 860.545. 9095

Center for Motion Analysis

860.284.0201

Center for Motion Analysis Fax

860.284.0213

PROGRAM DESCRIPTION: The Department of Orthopaedics provides full services for the diagnosis and treatment of disorders of the musculoskeletal system including trauma, Ilizarov limb lengthening and deformity correction, congenital defects (i.e., dislocated hip and club foot), neuromuscular deformities (cerebral palsy, spina bifida, muscle disease), spinal deformities, and sports injuries. Specialty clinics are held for scoliosis, cerebral palsy, spina bifida, and muscle disease. The Center for Motion Analysis laboratory provides comprehensive assessment of gait related disorders for pediatric and adult patients. A state of the art Orthotics and Prosthetics laboratory is on site for prompt fitting and delivery of patient's orthotic and prosthetics needs. The Department of Orthopaedics also has a comprehensive and progressive Sports Medicine program for youth, adolescent and young adult athletes. Currently programs are being offered in fitness/physical conditioning, knee injury prevention and sports concussion care.



Thomson, Jeffrey D.

Director

Catholic University, 78, BA
Georgetown University, 83, MD

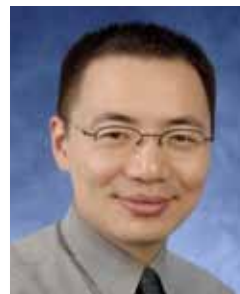
Internship/Residency: Walter Reed Army Medical Center, Surgery, 83-84; Walter Reed Army Medical Center,

Orthopaedic Surgery, 84-88

Fellowship: University of Miami, Pediatric Orthopaedic Surgery, 88-89

Board Certification: Orthopaedic Surgery, 91 Board Recertification, 01

Faculty Appointment: Associate Professor, Orthopaedic Surgery



Lee, Mark

Yale University, 97, BS
Albert Einstein Medical School, 01, MD

Internship/Residency: Brown University, General Surgery, 01-01; Brown University, Orthopaedics, 02-05

Fellowship: Brown University, Orthopaedics Trauma, 06-07; Texas Scottish Rite Children's Hospital, Pediatric Orthopaedics, 07-08

Board Certification: Board eligible

Faculty Appointment: Assistant Professor, Orthopaedic Surgery

Orthopaedics



Mack, Philip

University of California, 83, BS
University of California, 89, MD

Internship/Residency: Duke University Medical Center, Surgery, 89-91; Duke University Medical Center, Orthopaedic Surgery, 91-95

Fellowship: Texas Scottish Rite Hospital, Pediatric Orthopaedics, 95-96

Board-Certification: Orthopaedic Surgery, 07; Recert, 09

Faculty Appointment: Assistant Professor, Orthopaedic Surgery



Nissen, Carl

Director, Sports Medicine

Princeton University, 80, BA
University of Connecticut, 90, MD

Internship/Residency: University of Connecticut, 90-95, Orthopaedic Surgery,

Fellowship: Cincinnati Sports Medicine Orthopaedic Clinic Center, 96

Board Certification: Orthopaedic Surgery, 00

Faculty Appointment: Associate Professor, Orthopaedic Surgery



Pierz, Kristan A.

Yale University, 91, BS
University of Connecticut, 95, MD

Internship/Residency: University of Connecticut, 00, Orthopaedic Surgery

Fellowship: The Children's Hospital of Philadelphia, Pediatric Orthopaedic Surgery 01

Board Certification: Orthopaedic Surgery 04

Faculty Appointment: Assistant Professor, Orthopaedic Surgery



Zahradnik, Janet

Massachusetts Institute of Technology, 87, BS
Massachusetts Institute of Technology, 89, MA
Boston University School of Medicine, 93, MD

Internship/Residency: Boston University Medical Center, Surgery, 93-94; Boston University Medical Center, 94-98, Orthopaedic Surgery

Fellowship: Connecticut Children's Medical Center, Pediatric Orthopaedic Surgery, 98-99

Board Certification: Orthopaedic Surgery 02

Faculty Appointment: Associate Professor, Orthopaedic Surgery

Orthopaedics

PROFESSIONAL STAFF

Jeffrey D. Thomson, MD, Director
jthomso@connecticutchildrens.org

Mark Lee, MD
mlee@connecticutchildrens.org

Philip Mack, MD
pmack@connecticutchildrens.org

Carl Nissen, MD, Director, Sports Medicine
cnissen@connecticutchildrens.org

Kristan A. Pierz, MD
kpierz@connecticutchildrens.org

Janet Zahradnik, MD
jzahrad@connecticutchildrens.org

Bruce E. Bowman, PA-C
bbowman@connecticutchildrens.org

Amy Shannon, MS, APRN
ashannon@connecticutchildrens.org

Sylvia Öunpuu, MSc
sounpuu@connecticutchildrens.org

Otolaryngology

LOCATION

Connecticut Children's Medical Center - 2L
Satellite Locations: Avon, Glastonbury,

TELEPHONE

860.545.9650

After hours: 860.545.9650

Fax

860.545. 9214

PROGRAM DESCRIPTION: The Division of Otolaryngology maintains a full service pediatric program. Special programs include a pediatric cochlear implant program, endoscopic sinus surgery for children with cystic fibrosis, a pediatric voice clinic in collaboration with speech/language pathology, and a program for the management for the pediatric airway. The service coordinates its activities as part of the craniofacial team to serve these children with special needs.



Schoem, Scott
Director

Georgetown University, 79, BS
Georgetown University, 85, MD

Internship/Residency: National Naval Medical Center, Surgery, 85-86; National Naval Medical Center, Surgery, 87-91

Fellowship: Children's National Medical Center, Pediatric Otolaryngology, 93-94

Board Certification: Otolaryngology, 92

Faculty Appointment: Professor, Otolaryngology



Grindle, Christopher

Fairfield University, 98, BS
University of Wisconsin, 01-05,
MD

Internship/Residency: Thomas Jefferson University Hospital, General Surgery, 05-06; Thomas Jefferson University Hospital,

Otolaryngology, 10-11

Fellowship: Al duPont Hospital for Children, Pediatric Otolaryngology, 10-11

Faculty Appointment: Assistant Professor, Otolaryngology



Murray, Nicole

Tulane University, 91, BS
Tulane University School of
Medicine, 95, MD

Internship/Residency: Tulane University School of Medicine, General Surgery, 96-00; Tulane University School of Medicine,

Otolaryngology, 96-00

Fellowship: Children's Hospital of Pittsburgh, Pediatric Otolaryngology, 00-02

Board Certification: Otolaryngology, 01

Faculty Appointment: Assistant Professor, Otolaryngology

Otolaryngology



Valdez, Tulio A.

Pontificia Universidad Javeriana
School of Medicine, 97, MD

Internship/Residency: Tufts
University, Surgery, 00-01; Tufts
University, Otolaryngology-Head
& Neck Surgery, 01-05,

Fellowship: New England Medical Center, Tufts
University, Research, 98-00; Texas Children's Hospital,
Pediatric Otolaryngology, 05-07

Board Certification: Otolaryngology, 06

Faculty Appointment: Assistant Professor,
Otolaryngology

PROFESSIONAL STAFF

Scott Schoem, MD
Director
sschoem@connecticutchildrens.org

Nicole Murray, MD
Inmurray@connecticutchildrens.org

Christopher Grindle, MD
cgrindle@connecticutchildrens.org

Tulio A Valdez, MD
tvaldez@connecticutchildrens.org

Rebecca A. Strong, MSN, APRN
rstrong@connecticutchildrens.org

Joanna C. Maltese, BSN, RN, CORLN
jmaltes@connecticutchildrens.org

Raeanne Kelly, BSN, RN
rmkelly@connecticutchildrens.org

Pain Medicine Program

LOCATION

85 Seymour Street, Suite 11
Hartford, CT 06106

TELEPHONE

860.545.9997

Fax

860.545.8331

PROGRAM DESCRIPTION: The Division of Pain and Palliative Medicine includes an array of program to improve the quality of pain management throughout Connecticut Children's. The major components are the Pain Relief Program which includes the Acute Pain Consultation Program and the Chronic Pain Program, Integrative Medicine, the Sedation service and Palliative Medicine. The Comfort Central initiatives is focused on reducing the pain all children experience during hospitalization through education, protocol and policy development, ongoing improvement and increasing staff and public awareness.



Zempsky, William T.

Associate Director

Cornell University, 84, BA
Johns Hopkins University,
88, MD

Internship/Residency: Johns
Hopkins Hospital, Pediatrics,
88-91

Fellowship: Mott Children's Hospital (Michigan),
Cardiology, 91-92; Children's Hospital of Pittsburgh,
Pediatric Emergency Medicine, 93-95

Board Certification: Pediatrics, 92; Pediatric
Emergency Medicine, 96

Faculty Appointment: Professor, Pediatrics

PROFESSIONAL STAFF

William Zempsky, MD
Associate Director
wzempsk@connecticutchildrens.org

Barbara Rzepski, PhD
brzepsk@connecticutchildrens.org

Nancy Bright, RN
nbright@connecticutchildrens.org

Physical Therapy Department

LOCATION

Connecticut Children's Medical Center - 5F
Satellite Locations: Glastonbury, Farmington

Aquatic Therapy
Avon Wellness Center
100 Simsbury Road Avon, CT 06001

Glastonbury Wellness Center
628 Hebron Ave. Glastonbury, CT 06033

TELEPHONE

860.545.8600

Fax

860.545. 8605

PROGRAM DESCRIPTION: The Physical Therapy Department offers comprehensive evaluation, consultation and intervention services to children from birth through eighteen years of age. Together with families, health care teams and community resources, program staff works to maximize the functional potential of children of all ages and abilities. The Physical Therapy Department also has a Sports Medicine division that works collaboratively with Elite Sports Medicine. These dedicated clinicians maximize their patients' function and ability to return to sports' activities safely and effectively.

Outpatient physical therapists provide age-based and diagnosis specific assessment and intervention for children with sub-acute or chronic illness/disability. Typically referred diagnoses included but are not limited to: cerebral palsy, myelomeningocele, muscle disease, autism spectrum disorders, juvenile rheumatoid arthritis, pain, torticollis, plagiocephaly and orthopedic-sports medicine injuries. Clinical expertise emphasizes recovery, health, and fitness aimed at enhancing performance and maximizing children's abilities to function within their daily environment. Areas of specialization include neurodevelopmental treatment, pain management, adaptive equipment, aquatic therapy and sports medicine. Outpatient services are provided at the Connecticut Children's Medical Center in Hartford

and at our satellite locations in Glastonbury and Farmington. Our sports medicine division is located in our Farmington Satellite. Aquatic Therapy services are available at the Avon and Glastonbury Wellness Centers. Physical therapists are also integral members of Connecticut Children's multidisciplinary ambulatory clinics including but not limited to cerebral palsy, muscle disease and myelomeningocele/ neuromuscular clinics, chronic pain, and sports medicine.

Inpatient physical therapists address acute therapeutic needs of children and their families on medical-surgical floors, the day surgery unit, and the neonatal and intensive care units. As members of the acute pediatric inpatient rehabilitation program, physical therapists assist children who have had brain or spinal cord injuries, or who have complex medical conditions, regain the requisite functional skills to re-enter their home and school communities.

Clinical Specialists

Laurie Anorga, PT, ATP
Physical Therapy Clinical Specialist
Lanorga@connecticutchildrens.org

Jennifer Rodriguez, PT
Physical Therapy Clinical Specialist
jxrodri@connecticutchildrens.org

Inge Reaviel, PT
Adaptive Equipment Specialist
Ireavie@connecticutchildrens.org

Pediatric Staff Physical Therapists

Julie Booth MPT

Caryn Bradley PT, MMSc

Heather Champagne, MPT

Emily Denorfia, DPT

JaimeLynn Drake, RPT, MBA

Cecile Dzelinski, PT, MS, PCS

Stephanie Gardner, DPT

[Table of Contents](#)

Physical Therapy Department

Kim Hammersmith, PT
Kim Hrapchak, MSPT
Kristen Jackson, PT, MS
Kristin Kalar, MSPT
Kim King, MSPT
Christine Knight, PT, MS
Anne Lapin, PT
Leah Luginbuhl, MSPT
Sue McGuire, PT
Catherine McManus, DPT
Catherine Owen, PT
Sapna Parikh, MSPT
Kali Penders, DPT
Susan Prunier, PT
Inge Reaviel, PT
Amy Rodgers, PT
Wittmer Lynette, PT

Sports Medicine Staff Physical Therapists

Danielle Barone, DPT, CSCS
Jason Booker, PT
Nicholas Giampetruzzi, MSPT
Tricia Rogers, PT, MS, CSCS

Plastic Surgery

LOCATION

85 Seymour Street, Hartford, CT 06106

TELEPHONE

860.548.7338

Craniofacial Cleft Lip/Palate: 860.545.9360

Hand: 860.545.9100

PROGRAM DESCRIPTION: The Plastic Surgery Department provides comprehensive treatment for congenital, post-traumatic, tumor-related, and aesthetic deformities involving most anatomic areas. Specific problems include anomalies of the skull, ear, nose, lip, palate, facial skeleton, breast, chest, extremities, and hand. Burns, chronic wounds, post-traumatic wounds, and tumor defects are commonly treated. Microsurgery, facial palsy reconstruction, and congenital hand surgery are available.



Castiglione, Charles L.

Director

Yale University, 77, BA
Columbia University, 81, MD

Internship/Residency: Hartford Hospital, Surgery, 81-86;
Hospital of University of Pennsylvania Plastic Surgery, 86-88

Board Certification: Surgery, 87; Plastic Surgery, 90

Faculty Appointment: Assistant Clinical Professor, Oral & Maxillofacial Surgery; Associate Clinical Professor, Surgery



Ashmead, Duffield

Princeton University, 80, BA
Columbia University,
84, MD

Internship/Residency: Hartford Hospital, Surgery 84-87;
Hartford Hospital, Plastic Surgery, Hand Surgery, 87-88;

University of Massachusetts, Plastic Surgery 88-90

Board Certification: Plastic Surgery, 94

Faculty Appointment: Assistant Clinical Professor, Surgery



Babigian, Alan

Bates College, 88, BS
University of Massachusetts
Medical School, 94, MD

Internship/Residency:
University of Massachusetts
Medical Center, Surgery 94-99;
University of Massachusetts

Medical Center, Plastic Surgery, 99-01

Fellowship: Connecticut Combined Hand Surgery, 01-02

Board Certification: Plastic Surgery, 03

Faculty Appointment: Assistant Clinical Professor, Surgery & Orthopaedics; Clinical Faculty, Connecticut Combined Hand Fellowship

Plastic Surgery



Cech, Alex

Yale University, BS, MS
Duke University School of
Medicine, 89, MD

Internship/Residency: Hospital
of the University of Pennsylvania,
General Surgery, 89-95; Chief
Resident, General Surgery, 95-
96; Plastic Surgery, 96-98

Fellowship: Hospital of the University of Pennsylvania,
Surgical Oncology, 92-94; Memorial Sloan Kettering
Cancer Center, Micro Surgery, 98; Craniofacial Center
Change Gung Memorial Hospital, Taiwan, Craniofacial
Surgery, 99

Board Certification: Surgery, 97; Plastic Surgery, 99

Faculty Appointment: Assistant Clinical Professor,
Surgery

PROFESSIONAL STAFF

Charles L. Castiglione, MD
Director (General, Cleft Lip and Palate, Craniofacial)
ccastig@connecticutchildrens.org

Duffield Ashmead, MD
(Congenital Hand Surgery)

Alan Babigian, MD
(General, Congenital Hand Surgery, Facial Trauma,
Microsurgery)
ababigi@harthosp.org

Alex Cech, MD
(General, Cleft Lip and Palate, Craniofacial)
acech@connecticutchildrens.org

Orlando Delucia, MD
(General, Microsurgery)
odeluci@connecticutchildrens.org



Delucia, Orlando

Lafayette College, 87, BA
Georgetown University,
91, MD

Internship/Residency: Boston
University Medical Center,
General Surgery, 91-94; Medical
College of Ohio, Plastic Surgery,
96-98

Fellowship: Lahgy Clinic, Plastic Surgery, 94; Boston
University Medical Center, Plastic Surgery

Board Certification: Plastic Surgery, 99

Faculty Appointment: Assistant Clinical Professor,
Plastic Surgery

Primary Care

LOCATION

Connecticut Children's Medical Center - 1G

TELEPHONE 860.545.9300

After Hours: 860.545.9300

Physician Referral:

860.545.9331/860.545.9333

Fax 860.545.9301

PROGRAM DESCRIPTION: Primary Care services are provided by an integrated partnership between the Charter Oak Health Center, a federally qualified health center and the Connecticut Children's Medical Center Division of General Pediatrics. Charter Oak Health Center at Connecticut Children's is a primary care practice that includes pediatric physicians, nurse practitioners, physician assistants, a social worker, house staff and support staff. It provides a full range of health maintenance and acute services by appointment. Services are provided in a manner that strives to be family-centered, culturally effective, comprehensive, compassionate, and coordinated. In short, care is offered within a Medical Home model. On-call advice services are available at all times. The practice is a major teaching site for general pediatrics for the Pediatric Residency Program and the medical student teaching program of the University of Connecticut School of Medicine.

Special primary care services include the Lead Program (under the direction of Hilda Slivka, MD), which is part of the Hartford Regional Lead Treatment Center. The Drug-Exposed Infants program (Pro-Kids), under the direction of Margaret McLaren, MD, provides enhanced primary care services for infants with intrauterine substance exposure. Telephone consultations are available to area physicians for both programs. The Center is a recognized site of the highly successful emergent literacy program, Reach Out and Read. Dr. Catherine Wiley provides direction for our site and serves as Medical Director of the Connecticut Reach Out and Read Statewide Expansion Project. This initiative aims to strengthen existing sites and assist the development of new sites across the State. The

Center is also the site of the Health Outreach for Medical Equality (HOME) project, an outreach and care coordination demonstration model for Medicaid insured children and youth that is funded by the Hartford Foundation for Public Giving, the Connecticut Children's Fund and Connecticut Medicaid.



Wiley, Catherine C.
Medical Director

Duke University, 80, BS
Duke University School of
Medicine, 84, MD

Internship/Residency: Children's
Hospital of Philadelphia,
Pediatrics, 84-87

Board Certification: Pediatrics, 89

Faculty Appointment: Assistant Professor, Pediatrics



Cohen-Abbo, Alberto

Luis Razetti Medical School
(Venezuela), 84, MD

Internship/Residency: Children's
Medical Center (Dallas),
Pediatrics, 86-89

Fellowship: Children's Hospital,
Vanderbilt University, Pediatric Infectious Diseases, 89-
92 Children's Hospital, Boston, MA, 92-93

Board Certification: Pediatrics, 90; Recertified, 2005;
Infectious Diseases, 94

Faculty Appointment: Assistant Professor, Pediatrics

Primary Care



deMayo, Richelle

Dartmouth College, 92, BA
McGill University School of
Medicine, 98, MD

Internship/Residency: Brown
University/Hasbro Children's
Hospital, Pediatrics,
98-00; Children's Hospital of
Philadelphia, Pediatrics, 01-02

Fellowship: Johns Hopkins, Health Services Research,
02-06

Board Certification: Pediatrics, 02

Faculty Appointment: Assistant Professor, Pediatrics



McLaren, Margaret J.

University of the Witwatersrand
Medical School (South Africa),
69, MB.B.Ch. (MD)

Internship/Residency:
Johannesburg General Hospital,
Rotating, 70-71; University of
Connecticut, Pediatrics, 87-79

Fellowship: Yale University School of Medicine,
Epidemiology, 80-82

Board Certification: Pediatrics, 90 Recertification:
97,04

Faculty Appointment: Associate Professor, Pediatrics



Friedman, Traci A.

Cornell University, 93, BS
New York Medical College,
99, MD

Internship/Residency: St.
Christopher's Hospital For
Children, Pediatrics, 99-02

Board Certification: Pediatrics, 02

Faculty Appointment: Assistant Professor, Pediatrics



Scheiner, Laurie

New York University, 74, BA
New York Medical College,
77, MD

Internship/Residency:
Georgetown University Hospital,
Pediatrics, 77-80

Board Certification: Pediatrics, 82

Faculty Appointment: Assistant Professor, Pediatrics



Slivka, Hilda

University of Cincinnati, 76, BS
Medical College of Ohio, 81, MD

Internship/Residency: University
of Connecticut, Pediatrics, 81-84

Board Certification: Pediatrics, 86

Faculty Appointment: Associate Professor, Pediatrics

Primary Care

Wallace, Keri

University of North Carolina at Chapel Hill, 97, BS
University of North Carolina, 01

Internship/Residency: University of Connecticut,
Pediatrics, 01-05

Board Certification: Pediatrics, 04

Faculty Appointment: Assistant Professor, Pediatrics



Zimmerman, Jessica

Franklin and Marshall College,
98, BA
University of Connecticut, 03,
MD

Internship/Residency: University
of Chicago Hospitals, Pediatrics,
03-06

Board Certification: Pediatrics, 06

Faculty Appointment: Assistant Professor, Pediatrics

PROFESSIONAL STAFF

Catherine Wiley, MD
Director
cwiley@connecticutchildrens.org

Alberto Abbo-Cohen, MD
acohen@connecticutchildrens.org

Richelle deMayo, MD, CM
rdemayo@connecticutchildrens.org

Traci Friedman, MD
tfriedman@connecticutchildrens.org

Nina Livingston, MD

Margaret McLaren, MD
mmclare@connecticutchildrens.org

Laurie Scheiner, MD
lschein@connecticutchildrens.org

Hilda Slivka, MD

hslivka@connecticutchildrens.org

Kerri Wallace, MD
kwallace@connecticutchildrens.org

Jessica Zimmerman, MD
jzimmerman@connecticutchildrens.org

Carol Benjamin
cbenjam@connecticutchildrens.org

Darlene Abbate, APRN

Dorien Barnett, APRN
dsbarnet@connecticutchildrens.org

Meredith Brown, PA
mbrown@connecticutchildrens.org

Mary Anne Ferazzi, APRN
mferazz@connecticutchildrens.org

Laurie Kelliher, PA-C
lkellih@connecticutchildrens.org

Garry Lapidus, PA-C, MPH
glapidu@connecticutchildrens.org

Priscilla Malloy, APRN
pmalloy@connecticutchildrens.org

Dianne Powers, APRN
dpowers@connecticutchildrens.org

Amy Tousignant, APRN

Psychiatry

LOCATION

Connecticut Children's Medical Center - 2E
*The Institute of Living, 200 Retreat Ave.,
Hartford, CT 06106*

TELEPHONE 860.545.8660
IOL 860.545.7493

Fax 860.545.8661
IOL 860.545-7650

PROGRAM DESCRIPTION: The Division of Child and Adolescent Psychiatry provides an array of child and adolescent psychiatric services both here at Connecticut Children's Medical Center and at the Institute of Living. On the Connecticut Children's campus, consultations are provided to inpatients with special medical needs and children in crisis are seen in the Emergency Department.

On the campus of the Institute of Living (IOL) there are inpatient psychiatric services, partial hospitalization programs, a child guidance clinic and a special education school. In addition, at IOL, children with behavioral and/or emotional issues and medical illnesses are followed as outpatients. Throughout the Hartford Hospital/IOL spectrum of care, children and adolescents are seen with attention-deficit hyperactivity disorder, oppositional defiant disorder, conduct disorders, anxiety disorders, mood disorders including depression and bi-polar disorder, developmental disorders such as autism/pervasive developmental disorders/Asperger's syndrome, and somatoform disorders such as conversion and somatization, and psychological factors affecting medical illness. The department will triage referrals to the appropriate clinician based on his/her area of expertise and availability. The main number of the Child and Adolescent Psychiatry Practice at the Institute of Living is 860.545.7493. Emergency services are available, after business hours, at the Institute of Living, Assessment Center at 860.545.7200.



Sahl, Robert A.
Director

Johns Hopkins University, 78, BA
Vanderbilt, University Medical
School, 1982, MD

Internship/Residency: Children's
Hospital Medical Center,
Cincinnati, Ohio, Pediatrics 82-

84, Western Psychiatric Institute and Clinic, General
Psychiatry and Child and Adolescent Psychiatry, 84-88,

Board Certification: Psychiatry, 89, Child and
Adolescent Psychiatry, 90;

Faculty Appointment: Assistant Clinical Professor of
Psychiatry

Cohen, Eric

Johns Hopkins University, 78, BA
Vanderbilt, University Medical School, 1982, MD

Internship/Residency: Children's Hospital Medical
Center, Cincinnati, Ohio, Pediatrics 82-84, Western
Psychiatric Institute and Clinic, General Psychiatry and
Child and Adolescent Psychiatry, 84-88,

Board Certification: Psychiatry, 89, Child and
Adolescent Psychiatry, 90;

Faculty Appointment: Assistant Clinical Professor of
Psychiatry

Psychiatry



Namerow, Lisa

Hamilton College, 83, BA
University of Connecticut,
88, MD

Internship/Residency: Mount
Sinai Medical Center (N.Y.),
Pediatrics, 88-90; Mount Sinai
Medical Center, Psychiatry, 90-91

Fellowship: Mount Sinai Medical Center, Child and
Adolescent Psychiatry, 91-93

Board Certification: Pediatrics, 93; Psychiatry, 94;
Child and Adolescent Psychiatry, 95

Faculty Appointment: Assistant Professor of
Psychiatry



Rzepki, Barbara,

Temple University, 70, BS
Temple University, 72, MEd
University of North Carolina –
Chapel Hill, 85, PhD

Internship/Residency:
Newington Children's Hospital,
83-84

Board Certification: Licensure, 85, Connecticut
Psychologist

Mangini, Lynn

University of Connecticut, 78, BA
University of Connecticut Health Center, 86, MD

Internship/residency: The University of New Mexico
Health Center, 86-87 General Psychiatry, The
University of New Mexico Health Center, 87-89

Fellowship: Child and Adolescent Psychiatry, The
University of New Mexico Health Center, 89-91;
Consultation-Liaison Psychiatry, Hartford Hospital &
The University of Connecticut Health Center, 91-92

Board Certification: General Psychiatry, 91; Child and
Adolescent Psychiatry, 94

Faculty Appointment: Assistant Clinical Professor of
Psychiatry

PROFESSIONAL STAFF

Robert A. Sahl, MD,
Medical Director, Child and Adolescent Psychiatry,
IOL and Connecticut Children's
Rsahl@harthosp.org

Eric D. Cohen, MD
Echohen@harthosp.org

Nora Hanna, MD
Nhanna@harthosp.org

Lynn Mangini, MD
Lmangin@connecticutchildrens.org

Lisa Namerow, MD
Lnamero@harthosp.org

Umme Salema Rahim, MD
urahim@harthosp.org

Francisco Ripepi, MD
fripepi@harthosp.org

Barbara Rzepki, PhD
Brzepsk@connecticutchildrens.org

Pulmonary Medicine

LOCATION

Connecticut Children's Medical Center - 2B
Satellite Locations: Farmington, Glastonbury, Shelton, New Britain

TELEPHONE 860.545.9440

After hours: 860.545.9440

Pulmonary Function Lab: 860.545.9447

Fax 860.545.9445

PROGRAM DESCRIPTION: The Division provides care for children up to 18 years of age with asthma, apnea, bronchopulmonary dysplasia, cystic fibrosis, airway abnormalities, neuromuscular disease, sleep disorders, and chronic respiratory failure. The Division oversees a state-of-the-art pulmonary function laboratory that is capable of performing spirometry, body plethysmography, methacholine challenge, cardiorespiratory adaptation and exercise provocation testing in children. The Division also directs a pediatric polysomnography laboratory that performs sleep studies in children with suspected sleep apnea, hypoventilation, and other sleep disorders. Flexible bronchoscopies are done to evaluate children for dynamic airway narrowing, chronic aspiration, and lower respiratory infections. Sweat tests and allergy skin testing may also be ordered by contacting the Division.



Schramm, Craig M.

Director

Carleton College, 76, BA
University of Chicago, 80, MD

Internship/Residency: University of Colorado, Pediatrics, 80-83

Fellowship: University of Colorado, Pediatric Pulmonary Medicine, 84-87

Board Certification: Pediatrics, 86; Pediatric Pulmonology, 89, Recertification, 03

Faculty Appointment: Associate Professor, Pediatrics



Bhandari, Anita

Government Medical College, Patiala, Punjab, India, 85, MBBS

Internship/Residency:

P.G.I.M.E.R., Chandigarh, India, 88-90; Lady Hardinge Medical College & Kalawati Saran Children's Hospital, New Delhi,

India, 90-92; University of Connecticut Health Center, 93-95

Fellowship: Yale University, Pediatric Pulmonology, 95-98; A.I. duPont Hospital for Children, Epithelial Cell Biology, 98-99

Board Certification: Pediatrics, 95; Recertification 02; Pediatric Pulmonology, 02

Faculty Appointment: Assistant Professor, Pediatrics



Collins, Melanie S.

University of Connecticut, 97, BS, BA
University of Connecticut, 02, MD

Internship/Residency: University of Connecticut, Pediatrics, 02-05

Fellowship: University of Connecticut, Pediatric Pulmonology, 05-08

Faculty Appointment: Assistant Professor, Pediatrics

Pulmonary Medicine



Emre, Umit

Istanbul School of Medicine,
84, MD

Internship/Residency: Istanbul School of Medicine, Pediatrics, 86-88; State University of New York, Downstate Medical Center, Pediatrics, 88-91

Fellowship: State University of New York, Downstate Medical Center, Pediatric Pulmonology, 91-94

Board Certification: Pediatrics, 93; Recertification, 00, 07 Pediatric Pulmonology 96, Recertification, 04

Faculty Appointment: Assistant Professor, Pediatrics



Khullar, Monila

Lady Hardinge Medical College,
New Delhi, 95, MBBS

Internship/Residency: Westchester Medical Center/ New York Medical College, 03-06, Pediatrics

Fellowship: Maria Fareri Children's Hospital/ Westchester Medical Center, Pediatric Pulmonology, 06-09

Board Certification: Pediatrics, 06

Faculty Appointment: Assistant Professor, Pediatrics



Lapin, Craig D.

Brandeis University, 80, BA
University of Kansas, 84, MD

Internship/Residency: Baylor College of Medicine, Pediatrics, 84-87

Fellowship: The Hospital for Sick Children, Neonatology, 85-87; Baylor College of Medicine, Pediatric Pulmonology, 88-91

Board Certification: Pediatrics, 90; Pediatric Pulmonology 96, Recertification, 03

Faculty Appointment: Associate Professor, Pediatrics

PROFESSIONAL STAFF

Craig M. Schramm, MD

Director

cschram@connecticutchildrens.org

Anita Bhandari, MD

abhanda@connecticutchildrens.org

Melanie S. Collins, MD

mcollins@connecticutchildrens.org

Monila Khullar, MBBS

mkhullar@connecticutchildrens.org

Umit Emre, MD, FAAP

uemre@connecticutchildrens.org

Craig D. Lapin, MD

clapin@connecticutchildrens.org

Deborah Potticary, RN, MPH

dpotticary@connecticutchildrens.org

Rosi Bravo, APRN, AE-C

rbravo@connecticutchildrens.org

Linda Sheerman, RN

lsheerm@connecticutchildrens.org

Ginny Drapeau, RN

gdrapea@connecticutchildrens.org

Radiology

LOCATION

Connecticut Children's Medical Center - 1J

TELEPHONE 860.545.9120

After hours: 860.545.9124

Fax 860.545.9117

PROGRAM DESCRIPTION: The Division of Radiology at Connecticut Children's Medical Center is specifically set up for imaging of infants and children. The MR unit is a state of the art 1.5T scanner. There is collaboration with the Department of Anesthesia to provide sedation for any child who requires it for these lengthy studies. CT is provided with a multi-channel scanner using ALARA and "Image Gently" principles to keep radiation doses as low as possible. The ultrasound service is very busy as this is an imaging modality well suited to children since there is no ionizing radiation and small body size allows for excellent visualization. We run several ultrasound units all set up specifically for imaging children. Fluoroscopy is provided with two digital fluoroscopy machines, one with pulsed fluoro to reduce radiation dose even further. General imaging is performed on several CR (Computed Radiography) units. All modalities are digital and images are stored in a PACS system and are therefore available for viewing by referring physicians from any computer. The department is supported by a sedation service which provides sedation when necessary for more difficult procedures. There is also support by the Child Life Department to help children through their procedures. Nuclear Medicine studies are provided through an agreement with Hartford Hospital.



Brown, Timothy R.

Director

University of Western Ontario,
80, MD

Internship/Residency: University
Hospital (Canada), Medicine,
80-82; Victoria Hospital
(Canada), Radiology, 82-85

Fellowship: Children's Hospital (Boston), Pediatric
Radiology, 85-87

Board Certification: Radiology, 95

Faculty Appointment: Assistant Clinical Professor,
Radiology

PROFESSIONAL STAFF

R. Timothy Brown, MD
tbrown@connecticutchildrens.org

Research

LOCATION

80 Jefferson Street, Hartford, CT 06106
Connecticut Children's Medical Center - 1K,
5E, Clinical Trials Unit

TELEPHONE

860.545.9905
Clinical Trials: 860.545.9981

Fax

860.545-9906
Clinical Trials: 860.545.8702

PROGRAM DESCRIPTION: The Department of Research exists to promote pediatric research at Connecticut Children's Medical Center and in the community at large, to support investigators, and to provide comprehensive, federally compliant policies and services for research administration. The Department coordinates with Grants and Special Programs, the Connecticut Children's Medical Center Foundation, and the Institutional Review Board to offer a centralized model where investigators can obtain assistance all aspects of research planning and conduct. Through its two programs, the Child Health Data Center and the Clinical Trials Unit, the Department of Research provides comprehensive research services, as well as offering seminars in research methods, guiding student research projects and participating in fellowship training.

The Child Health Data Center offers expertise in research methods and study design, database design and implementation, biostatistical analysis, grant writing, program evaluation, focus groups and other qualitative methods and geographic information systems analysis. Founded in 1996 through a grant from the Aetna Foundation, the Center is active in projects both within Connecticut Children's Medical Center and throughout the region and state.

The Clinical Trials Unit, supporting CCMC investigators with administrative, regulatory and protocol responsibilities for clinical research, provides children and families with effective, ethical and reliable evaluation of new therapies and treatments in a safe and caring

environment. Studies are both industry and government supported and include more than 15 pediatric and surgical subspecialties (endocrinology, nephrology, infectious disease, rheumatology, allergy, pulmonology, hematology/oncology, genetics, gastroenterology, neonatology, dermatology, cardiology, anesthesiology, urology, orthopedics and pain management). The CTU occupies an area that includes two rooms equipped for infusions and all-day patient stay. A dedicated research specimen processing lab is staffed by a laboratory technician during regular work hours.

The Department of Research seeks to maximize resources for investigators through alliances with the General Clinical Research Center at the University of Connecticut and across pediatric services in the region. Research support services are available to all Connecticut Children's Medical Center-affiliated investigators.



Burke, Georgine S.

Iowa State University, 68, BA
University of Connecticut,
86, PhD

Faculty Appointment: Assistant Professor, Pediatrics; Assistant Professor, Community Medicine



McKay, Kathleen

Harvard University, 81, BA
Yale University, 99, PhD

Faculty Appointment: Assistant Professor, Pediatrics

Research

PROFESSIONAL STAFF

Georgine Burke, PhD
Director of Research Operations
gburke@connecticutchildrens.org

CHILD HEALTH DATA CENTER

Kathleen McKay, PhD
Senior Epidemiologist
kmckay@connecticutchildrens.org

Trudy Lerer, MS
Biostatistician
tlerer@connecticutchildrens.org

Sandra Hale
Health Data Specialist III
shale@connecticutchildrens.org

Rosa Negron
Health Data Specialist
rnegron@connecticutchildrens.org

CLINICAL TRIALS UNIT

Bertha Robbins, MS, RNC, CCRP
Clinical Nurse Manager
brobbin@connecticutchildrens.org

Lee Sullivan, RN
Study Coordinator
lsulliv@connecticutchildrens.org

Renee Richard, RN
Study Coordinator
rrichar@connecticutchildrens.org

Leigh Hart, RN
Study Coordinator
lhart@connecticutchildrens.org

Alice Willard, RN
Study Coordinator

Robin Arens, CCRP
Research Assistant
rarens@connecticutchildrens.org

Katarzyna Fadrowski
Research Assistant
KFadrowski@connecticutchildrens.org

Bunly Kuoch
Research Technician
bkuoch@connecticutchildrens.org

Rheumatology

LOCATION

Connecticut Children's Medical Center - 2L
*Satellite Locations: Shelton, New London,
Torrington, Shriners/Massachusetts, Albany
Medical Center*

TELEPHONE

860.545.9390
After hours: 860.545.9390

Fax

860.545. 9914

PROGRAM DESCRIPTION: The Division of Pediatric Rheumatology evaluates children with known or suspected rheumatic diseases, undiagnosed musculoskeletal pain, Lyme disease, chronic fatigue syndrome, chronic pain disorders, inflammatory muscle disease, spondyloarthropathies, fever of unknown origin, and autoimmune disorders. Diagnostic and therapeutic services are provided in a teaching setting. Procedural sedation and analgesia is employed for most children. A family-centered approach is emphasized and community based resources are utilized when appropriate.



Zemel, Lawrence

Director

Brooklyn College, 69, BS
State University of New York
(Buffalo), 73, MD

Internship/Residency: Buffalo
Children's Hospital, Pediatrics
73-75

Fellowship: New England Medical Center,
Rheumatology, 75-77; Children's Hospital, Boston,
Rheumatology, 76-77

Board Certification: Pediatrics, 77; Pediatric
Rheumatology, 92

Faculty Appointment: Professor, Pediatrics



Edelheit, Barbara

University of California, Berkeley,
89, BA
State University of New York,
Health Science Center at
Syracuse, 96, MD

Internship/Residency: The
New York Presbyterian Hospital,
Pediatrics, 96-99

Fellowship: Hospital for Special Surgery-Cornell
Medical Center, Rheumatology, 99-02

Board Certification: Pediatrics, 99; Pediatric
Rheumatology, 2004

Faculty Appointment: Assistant Professor, Pediatrics



Rzepki, Barbara

Temple University, 70, BS
Temple University, 72, MEd
University of North Carolina -
Chapel Hill, 85, PhD

Board Certification: Licensure,
85, Connecticut Psychologist

PROFESSIONAL STAFF

Lawrence Zemel, MD, Director
lzemel@connecticutchildrens.org

Barbara Edelheit, MD
bedelhe@connecticutchildrens.org

Barbara Rzepki, PhD
brzepsk@connecticutchildrens.org

Laura Deane, RN
ldeane@connecticutchildrens.org

Maria Sanzo, RN
msanzo@connecticutchildrens.org

Sleep Diagnostic Laboratory

LOCATION

Connecticut Children's Medical Center - 2A

TELEPHONE

203.284.2818 (Referrals)

860.545.9485 (General information and questions)

PROFESSIONAL STAFF

Craig M. Schramm, MD
Medical Director
cschram@connecticutchildrens.org

Toni Grady, RRT, CPFT
Manager
tgrady@connecticutchildrens.org

PROGRAM DESCRIPTION: Connecticut Children's sleep diagnostic laboratory is located in the EEG telemetry suite. The two-room lab is utilized three to four days per week. Parents can spend the night with their child, who is admitted at 7 pm with the overnight study ending around 5-6 am.

Connecticut Children's has partnered with Gaylord Sleep Medicine to equip the lab and supply a technician. The lab's primary function is to perform a polysomnography test which helps a physician evaluate, diagnose and treat numerous pediatric sleep disorders such as sleep apnea and snoring. Other evaluations can be performed for unexplained drowsiness, narcolepsy, insomnia and other sleep disturbances. The state-of-the-art lab is unique because children of all ages are treated unlike other labs in the state—many of which will not treat a child under the age of 2.

A sleep study includes attaching electrodes near the child's eyes, chin, legs and other body parts to help monitor muscle movements, eye movements, snoring, twitching legs, heart beat, respiration and the body's oxygen level. Brain waves are recorded to measure the five stages of sleep. Parents who feel their child needs a sleep study, should consult their pediatrician who should then call the sleep diagnostic laboratory referral number to order a sleep test for the child.

Special Kids Support Center

LOCATION

111 Founders Plaza, 19th Floor,
East Hartford, CT 06108

TELEPHONE

860.610.4200 or toll free 877.835.5768

Fax

860.610.4201

PROGRAM DESCRIPTION: The Special Kids Support Center (SKSC) has been providing culturally competent care coordination for its patients and families for over a decade. The Center is well established and collaborates with many partners and agencies throughout the State of Connecticut to insure that children with special needs are being serviced appropriately.

The Center is the State of CT fiduciary for the HUSKY Plus Physical Program (Department of Social Services) and has been awarded the Title V Maternal Child Block Grant for the Medical Home Initiative from the Department of Public Health. Special Kids Support Center, in collaboration with state and local agencies, provide care coordination for Children and Youth with Special Health Care Needs (CYSHCN) in the North Central Region of CT. The Department of Public Health has also awarded the Center with the State Bioterrorism Grant for emergency preparedness for Children and Youth with Special Health Care Needs.

The Special Kids Support Center provides families with care coordination for medical and non medical issues that adversely affect the child and his/her ability to function at the optimal level of health. The Center can also offer families assistance with educational and advocacy needs as well as linkage to community resources for social service requests. Most importantly, Special Kids Support Center empowers families to advocate for the needs of their children.

The Center also provides community-based primary care settings with training and technical support to become a medical home for all children.

Services include, but are not limited to:

- 1) Care Coordination – needs assessment and community resource linkage
- 2) Advocacy – community, health care access, educational and public policy.
- 3) Education – family, groups, students
- 4) Support – to parents and providers
- 5) Benefit coordination – strives to maximize all resources
- 6) Communication between care providers
- 7) Medical Home Implementation

PROFESSIONAL STAFF

Barbara E. Brown, MS, MEd,
Director, Education and Rehabilitation Services
bbrown@connecticutchildrens.org

Ann Milanese, MD
Medical Director, Education and Rehabilitation Services
Division Chief, Developmental Pediatrics
Amilane@connecticutchildrens.org

Susan Roman, MPH, RN, BA
sroman@connecticutchildrens.org

Patricia Dickinson
Pdickin@connecticutchildrens.org

Cynthia Giovacchino
Cgiovac@connecticutchildrens.org

Laura Knapp
Lknapp@connecticutchildrens.org

Penny Longo, RN, BSN
Plongo@connecticutchildrens.org

Allison Matthews-Wilson, MSW
Awilson@connecticutchildrens.org

Barbara McKinney, RN, MPH
Bmckinn@connecticutchildrens.org

Lisa Morin
Lmorin@connecticutchildrens.org

Katherine Ramirez
kramirez01@connecticutchildrens.org

Special Kids Support Center

Ann Riley, RN, MSN
Ariley@connecticutchildrens.org

Aixa Rodriguez
arodriguez02@connecticutchildrens.org

Sarah Schlegel, MD
sschlegel@connecticutchildrens.org

Rosa Rodriguez
Rrodriguez02@connecticutchildrens.org
(Hispanic Health Council)

Speech-Language Pathology

LOCATION

Connecticut Children's Medical Center - 2F
*Satellite Locations: Avon, Farmington,
Glastonbury*

TELEPHONE

860.545.9640

Fax

860.545.9662

PROGRAM DESCRIPTION: The Department of Speech-Language Pathology specializes in the evaluation and treatment of children from birth to 18 years of age with speech and language impairments and feeding and swallowing difficulties. Speech-Language Pathologists provide assessment and intervention for children with a variety of disorders that increase the risk for communication and feeding/swallowing difficulties, including: autism spectrum disorders, brain tumors, cerebral palsy, fluency disorders, genetic syndromes, hearing impairment, tracheostomies, traumatic brain injuries, voice disorders, vocal cord dysfunction, and developmentally-based language and/or speech disorders. The Department of Speech Language Pathology also offers school consultations as appropriate. A physician referral is required for all evaluation and treatment services. Please specify the areas of concern when making a referral. The following list describes specialized programs, clinics and services.

AAC (Augmentative and Alternative Communication)

– Children with severe communication disorders may be candidates for augmentative and alternative communication strategies, including low-technology and high-technology tools. For those children with physical impairments who require special access methods, an Occupational Therapist and Speech-Language Pathologist collaborate on AAC/AT (Assistive Technology) evaluation.

Autism Spectrum Assessment Program (ASAP)

– The Autism Spectrum Assessment Program is designed to identify autism in children who are under the age of 4. Using a collaborative approach with Developmental

Pediatrics children can be identified quickly to be sure they receive the early intervention they need. Appropriate referrals include children who score red flags on the M-CHAT or exhibit signs and symptoms of Autism.

Swallow Clinic – a collaborative diagnostic program with otolaryngology utilizing flexible endoscopic evaluation of swallowing (FEES). This technique provides assessment of the oral and pharyngeal swallow as well as detailed examination of the upper airway. Children with combined swallow and breathing difficulties or those who cannot undergo radiological examination of swallow are ideal for a referral to this program.

MBS Studies (Modified Barium Swallow)

– Modified Barium Swallow studies are conducted by a Speech Language Pathologist and Radiologist to examine the oral, pharyngeal and esophageal phases of swallowing to detect aspiration and determine if aspiration occurs with various textures of food and liquid. An MBS can aid in identifying optimal textures and compensations necessary for appropriate oral intake.

Voice Clinic – This collaborative program between an Otolaryngologist and Speech-Language Pathologist seeks to identify children over the age of 3 with voice disorders. Children who present with a chronic hoarse voice, or who have a paralyzed vocal fold are appropriate referrals for this program.

PROFESSIONAL STAFF

Virginia McGoey-Radshaw, M.Ed, CCC-SLP
Manager
vradshaw@connecticutchildrens.org

Patti Albert, MS, CCC-SLP
palbert@connecticutchildrens.org

Sara Burnham, M.A. CF-SLP
sburnham@connecticutchildrens.org

Jennifer Elomaa, M.S., CCC-SLP
jelomaa@connecticutchildrens.org

Speech-Language Pathology

Kathryn Fields, MS, CCC-SLP
kfields@connecticutchildrens.org

Nicole Gallagher, MS CCC-SLP
ngallagher@connecticutchildrens.org

Suzanne Hamilton, MS, CCC-SLP
shamilton01@connecticutchildrens.org

Meghan Krodel, M.A., CCC-SLP
mkrodel@connecticutchildrens.org

Taryn Rogers, M.A., CCC-SLP
tmrogers@connecticutchildrens.org

Marni Simon, M.A., CCC-SLP
mbsimon@connecticutchildrens.org

Jennifer Twachtman-Reilly, M.S., CCC-SLP
jtwachtman@connecticutchildrens.org

Ginny Weill, CF-SLP – M.Ed. CCC-SLP
gweill@connecticut childrens.org

Sports Medicine

LOCATION

399 Farmington Ave., 3rd Floor
Farmington, CT 06032

TELEPHONE

860.284.0220

WEBSITE

www.elitesportsmedicine.org

PROGRAM DESCRIPTION: The increasing emphasis placed on developing young athletes today brings an unfortunate increase in injuries as well as other issues. The need for all-inclusive sports medicine for children and adolescents is growing stronger every year. The goal of Elite Sports Medicine is to provide comprehensive medical care for youth, adolescent and young adult athletes between the ages of 10 and 30. Elite Sports Medicine works to reduce sports injury risks and treats the entire athlete by combining multiple disciplines in one location. This is completed by merging surgical and non-surgical treatment with physical therapy, performance enhancement, injury prevention programs, sports psychology, sports nutrition and sports concussion care. In addition, Elite Sports Medicine works closely with the Center for Motion Analysis to perform cutting-edge research on the biomechanical properties of sports.

Elite Sports Medicine employs professionals from disciplines in orthopaedic surgery, family practice, athletic training, physical therapy, and sports psychology. Patients are treated at Connecticut Children's Medical Center's Farmington office.



Nissen, Carl

Director

Princeton University, 80, BA
University of Connecticut, 90, MD

Internship/Residency: University of Connecticut, Orthopaedic Surgery, 90-95

Fellowship: Cincinnati Sports Medicine Orthopaedic Clinic Center, 96

Board Certification: Orthopaedic Surgery, 08;
Sports Medicine, 08

Faculty Appointment: Associate Professor,
Orthopaedic Surgery



Wang, David

Carleton College, 81, BA
University of Minnesota, 86, MS
in Exercise Physiology, University of Minnesota, 89, MD

Internship/Residency: McKennan Hospital, Transitional Residency, 89-90; University of California at San Diego, Family Practice, 91-93

Board Certification: Family Practice, 93, 00, 06;
Sports Medicine, 97, 07

Faculty Appointment: Associate Professor

Sports Medicine

PROFESSIONAL STAFF

Carl Nissen, MD, Director
cnissen@connecticutchildrens.org

David Wang, MD
dwang01@connecticutchildrens.org

Laura Miele, PhD
Immiele@connecticutchildrens.org

AJ Riccuiti, PA
ariccuiti@connecticutchildrens.org

Regina O'Hara, ATC
rohara@connecticutchildrens.org

Jason Booker, PT
jbooker@connecticutchildrens.org

Tricia Rogers, PT, MS
trogers01@connecticutchildrens.org

Danielle Barone, PT, DPT
dbarone01@connecticutchildrens.org

Nicholas Giampetruzzi, PT, MS
ngiampetruzzi@connecticutchildrens.org

Surgery, General

LOCATION

Connecticut Children's Medical Center - 2G
Satellite Locations: Farmington

TELEPHONE

860.545.9520 or 860.545.9524
After hours: 860.545.9520

Fax

860.545.9545

PROGRAM DESCRIPTION: Board certified pediatric surgeons provide a full service pediatric (neonatal through adolescence) surgical program including problems of the head and neck, chest (non-cardiac), abdomen, gastrointestinal tract, oncology, soft tissues of the extremities, anus/rectum, endocrine glands, pediatric gynecology and genitourinary system (non-reconstructive). Emphasis is placed on using minimally invasive approaches when appropriate. These include: laparoscopic and thoracoscopic surgery, bronchoscopy and esophagoscopy. Pre-natal consultations are available and encouraged. Full service pediatric trauma care is provided through Connecticut Children's which is an American College of Surgeons verified Level I trauma center. Transport, diagnostic, and interventional services are available 24 hours/day.



Finck, Christine M.
Director

Boston University, 90, BS
SUNY HSC-Syracuse, 94, MD

Internship/Residency: SUNY
HSC-Syracuse, Surgery, 94-00

Fellowship: Arkansas Children's
Hospital, Pediatric Surgery, 00-02

Board Certification: Surgery, 04

Faculty Appointment: Assistant Professor, Surgery,
Pediatrics



Campbell, Brendan T.
*Medical Director,
Pediatric Trauma*

Trinity College, 92, BS
University of Connecticut, 97, MD
University of Michigan, 02, MPH

Internship/Residency: University
of North Carolina, General
Surgery Resident, 97-00 and 02-04; Robert Wood
Johnson Clinical Scholars Program, University of
Michigan, 00-02

Fellowship: Arkansas Children's Hospital, Pediatric
Surgery, 04-06

Board Certification: Surgery, 05; Pediatric Surgery, 08

Faculty Appointment: Assistant Professor, Surgery,
Pediatrics



Bourque, Michael D.

Laval University (Canada), 76, BS
University of Sherbrooke,
(Canada), 81, MD

Internship/Residency: University
of Sherbrooke, Surgery, 81-85;
University of Montreal, Surgery,
85-86

Fellowship: University of Montreal, Pediatric Surgery,
87-88

Board Certification: General Surgery, 92;
Recertification, 03; Pediatric Surgery, 96

Faculty Appointment: Assistant Professor, Surgery,
Pediatrics

Surgery, General

**Hight, Donald W.**

Dartmouth College, 64, BS
Harvard University School of
Medicine, 68, MD

Internship/Residency: Peter
Bent Brigham, Surgery, 68-75

Fellowship: Royal Hospital
for Sick Children (Scotland),

Pediatric Surgery, 75-76; Children's Hospital of
Michigan, Pediatric Surgery, 76-78

Board Certification: Surgery, 77; Pediatric Surgery, 80,
Recertification, 87, 97

Faculty Appointment: Professor, Surgery

**Christine Rader**

Boston College, 92, BA
Boston University, 99, MA
Boston University, 04, MD

Internship/Residency:
University of Connecticut,
Surgery, 04-09

Fellowship: Yale-Haven Hospital, General Pediatric
Surgery, 09-11

Faculty Appointment: Assistant Professor, Surgery,
Pediatrics

**Weiss, Richard G.**

University of Pennsylvania,
78, BA
New York University, 82, MD

Internship/Residency: New York
University, Surgery, 82-86,
88-89

Fellowship: Children's Hospital (Cincinnati), Research
Fellow, Pediatric Surgery, 86-88; State University of
New York, Pediatric Surgery, 89-91

Board Certification: Surgery, 90; Recertification, 99:
Pediatric Surgery, 94, Recertification 01: Surgical
Critical Care, 92, Recertification, 02

Faculty Appointment: Associate Professor, Surgery,
Pediatrics, Traumatology, and Emergency Medicine

PROFESSIONAL STAFF

Christine Finck, MD

Director

cfinck@connecticutchildrens.org

Brendan T. Campbell, MD, MPH

Director, Pediatric Trauma

bcampbell@connecticutchildrens.org

Michael Bourque, MD

mbourque@connecticutchildrens.org

Donald Hight, MD

dhight@connecticutchildrens.org

Christine Rader, MD

Richard Weiss, MD

crader@connecticutchildrens.org

Irene Cordilico, PA-C

ihancha@connecticutchildrens.org

Sherry Sanderson, APRN

ssanderson@connecticutchildrens.org

Liz Arbor

earbor@connecticutchildrens.org

T.E.A.M. Club

LOCATION

Connecticut Children's Medical Center - 5F

TELEPHONE

860.860.545.9340

Director: 860.545.8796

Coordination: 860.545.9340

Fax

860.545.9345

PROGRAM DESCRIPTION: The T.E.A.M. Club is a program for overweight children ages 6-9. T.E.A.M. stands for Try your best, Eat well, Attitude counts, and Move for fun. This multidisciplinary, interactive program for children ages 6 to 9 is available for a fee to those who meet the entry criteria. Our 12 week program includes an initial assessment session of two hours, a follow up parent meeting to inform them of results, eight 90-minute weekly sessions, and two follow up sessions to assess progress and to help families set goals going forward. Each session is divided into segments that the family and child spend with the T.E.A.M. leaders in the areas of fitness, nutrition, and lifestyle. Our program requires family participation. The sessions are educational, stimulating, and fun. The program supports families as they take the initiative to make changes that will bring about a healthy lifestyle.

PROFESSIONAL STAFF

Claire Dalidowitz, MS, MA, RD

Director

cdalido@connecticutchildrens.org

Susan McGuire, PT

Fitness

smcguir@connecticutchildrens.org

Stacy Reicher, LCSW

Lifestyles/Behavior

sreiche@connecticutchildrens.org

Michelle Fraser, RD, CNSD, CD-N

Nutrition

mfraser@connecticutchildrens.org

Elizabeth Estrada, MD

Endocrinology

eeestrada@connecticutchildrens.org

Urology

LOCATION

Connecticut Children's Medical Center - 2G
Satellite Locations: Farmington, Shelton

TELEPHONE

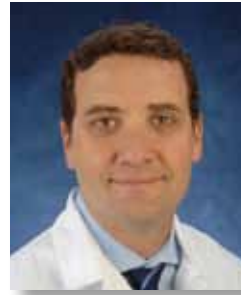
860.545.9520

After hours: 860.545.9520

Fax

860.545.9036

PROGRAM DESCRIPTION: The Urology Division provides comprehensive services covering all abnormalities of the genitourinary system. There are three specific programs where there is a special interest and capability. These programs include: (1) the maternal fetal urology program where antenatal urologic abnormalities are the focus of attention, (2) reconstructive urology program where all reconstructive, complex urologic problems can be managed, such as hypospadias and other congenital abnormalities, and (3) a urodynamics and incontinence center managing all bowel and bladder incontinence problems whether related to neurogenic bladder dysfunction or voiding dysfunction of both bowel and bladder. These programs run in conjunction with other expertise in areas which include hydronephrosis, multi-cystic/dysplastic kidney, duplication abnormalities, ureterocele, epispadias, undescended testis, hydrocele, hernia, tumors, vesicoureteral reflux, posterior urethral valves, bladder/cloacal exstrophy, neurogenic bladder, recurrent urinary tract infections, cystitis, incontinence, trauma, uretero-pelvic junction obstruction, intersex/ vaginoplasty, urologic care of spina bifida, urodynamic evaluation, biofeedback for voiding dysfunction, urinary tract infections, urinary tract stones, urachal abnormalities, and complex reconstructive urology. Our teaching program includes urologic, surgical and pediatrics residents, as well as medical students.



Ferrer, Fernando, A.

Director

Seton Hall University, 85, BA
Georgetown University, 89, MD

Internship/Residency:

Portsmouth Naval Medical Center,
91 Naval Diving & Undersea
Medical Institution, 92, University
of Connecticut, Urologic
Surgery, 99

Fellowship: The Johns Hopkins Hospital, Brady
Urologic Institute, 01

Board Certification: 2005, American Board of Urology

Faculty Appointment: Associate Professor of Surgery
(Urology) and Pediatrics (Oncology)



Bernstein, Jill

Cornell University, 93, BS
University of Virginia, 97, MD

Internship/Residency: New York
Hospital/Cornell Medical Center,
98; Duke University Medical
Center, 00

Fellowship: Children's Hospital Medical Center of
Akron, Pediatric Emergency Medicine, 03

Board Certification: Pediatrics, 00

Faculty Appointment: Assistant Professor, Pediatrics

Urology



Kim, Christina

University of Wisconsin-Madison, 93, BS
University of Wisconsin-Madison, 97, MD

Internship/Residency: University of Connecticut, Surgery, 99, Urology, 03

Fellowship: University of Pittsburgh, 04

Board Certification: 2006, American Board of Urology

Faculty Appointment: Assistant Professor, Surgery (Urology)



Makari, John H.

The Ohio State University, 93, BA
The Ohio State University, 96, MA
The Ohio State University, 96, MHA
The Ohio State University, 00, MD

Internship/Residency: George Washington University, Surgery, 02; Urology, 06

Fellowship: Vanderbilt University, Pediatric Urology, 08

Board Certification: 2010, American Board of Urology

Faculty Appointment: Assistant Professor, Surgery (Urology)



Nelson, Eric

Tufts University, 98, BS
Tufts University, 03, MD

Internship/Residency: Thomas Jefferson University Hospital, Surgery, 03-04; Urology, 04-09

Fellowship: Baylor College of Medicine, Pediatric Urology, 09-11

Faculty Appointment: Assistant Professor, Surgery (Urology)

PROFESSIONAL STAFF

Fernando A. Ferrer, MD

Director

fferrer@connecticutchildrens.org

Jill Bernstein, MD

jbernst@connecticutchildrens.org

Christina Kim, MD

ckim@connecticutchildrens.org

John Makari, MD

jmakari@connecticutchildrens.org

Eric Nelson

enelson@connecticutchildrens.org

Yolanda Gonzalez

ygonzalez01@connecticutchildrens.org

Susan Handley

shandle@connecticutchildrens.org

Susan Marai, RN, BSN

smarai@connecticutchildrens.org

Sarah Mazzaresse, RN, BSN

smazzaresse@connecticutchildrens.org

Barbara Mulhullond, RN

bmulhullond@connecticutchildrens.org

Tiffany Woods

twoods@connecticutchildrens.org